

Utah Central Association of REALTORS®
Monthly Statistics

To: Brokers and Agents
From: The Utah Central Association of REALTORS®
Subject: Monthly Statistics: April 2017

Monthly Utah and Juab County statistics provided by the Utah Central Association of REALTORS®

All Residential Types -- Utah and Juab Counties

		Active	Units	YTD	Ratio	DOM	DOM	Average	Average	Median	Median
		Listings	Sold	Sales	Sales/List	Listed	Solds	Sale \$	List \$	Sale \$	List \$
JAN	2010	4050	259	259	6.4%	96	96	\$235,787	\$280,461	\$210,000	\$209,900
FEB	2010	4188	304	563	7.3%	102	102	\$230,976	\$277,873	\$195,500	\$205,000
MAR	2010	4351	466	1029	10.7%	91	91	\$223,059	\$277,810	\$190,000	\$207,000
APR	2010	4220	509	1538	12.1%	97	79	\$221,067	\$278,891	\$185,000	\$209,900
MAY	2010	4337	499	2037	11.5%	109	76	\$212,209	\$275,642	\$186,300	\$205,000
JUN	2010	4358	462	2499	10.6%	116	75	\$228,821	\$276,275	\$197,200	\$202,850
JUL	2010	4325	360	2859	8.3%	118	78	\$225,440	\$274,091	\$199,000	\$199,900
AUG	2010	4191	413	3272	9.9%	116	99	\$224,833	\$266,829	\$189,900	\$199,900
SEP	2010	4047	365	3637	9.0%	119	99	\$213,142	\$265,115	\$185,500	\$199,900
OCT	2010	3970	348	3985	8.8%	122	92	\$219,515	\$266,354	\$187,705	\$199,000
NOV	2010	3927	364	4349	9.3%	130	91	\$218,671	\$262,169	\$184,900	\$197,000
DEC	2010	3788	372	4721	9.8%	132	101	\$214,273	\$257,384	\$185,450	\$195,900
								\$222,316		\$188,803	

		Active	Units	YTD	Ratio	DOM	DOM	Average	Average	Median	Median
		Listings	Sold	Sales	Sales/List	Listed	Solds	Sale \$	List \$	Sale \$	List \$
JAN	2011	3829	336	336	8.8%	130	113	\$208,262	\$256,344	\$181,437	\$195,000
FEB	2011	3800	341	677	9.0%	128	110	\$210,018	\$256,592	\$180,000	\$198,950
MAR	2011	3796	462	1139	12.2%	119	105	\$200,844	\$262,273	\$175,000	\$199,000
APR	2011	3770	462	1601	12.3%	111	102	\$209,381	\$262,234	\$179,900	\$199,500
MAY	2011	3779	501	2102	13.3%	117	89	\$210,847	\$274,010	\$179,900	\$199,900
JUN	2011	3743	560	2662	15.0%	122	93	\$199,443	\$275,585	\$173,525	\$199,900
JUL	2011	3592	467	3129	13.0%	123	70	\$204,700	\$283,069	\$175,000	\$199,900
AUG	2011	3502	553	3682	15.8%	130	82	\$208,293	\$281,328	\$182,000	\$199,900
SEP	2011	3406	464	4146	13.6%	127	89	\$213,073	\$280,604	\$178,000	\$199,900
OCT	2011	3167	454	4600	14.3%	137	93	\$199,956	\$276,991	\$178,000	\$199,999
NOV	2011	3083	419	5019	13.6%	141	91	\$206,372	\$274,150	\$177,000	\$199,999
DEC	2011	3067	480	5499	15.7%	132	73	\$199,988	\$267,226	\$172,000	\$200,000
		Change		16.48%				\$205,931		\$178,000	

		Active	Units	YTD	Ratio	DOM	DOM	Average	Average	Median	Median
		Listings	Sold	Sales	Sales/List	Listed	Solds	Sale \$	List \$	Sale \$	List \$
JAN	2012	2945	334	334	11.3%	128	88	\$196,695	\$268,723	\$164,950	\$200,000
FEB	2012	2859	379	713	13.3%	114	70	\$205,112	\$275,726	\$180,000	\$200,900
MAR	2012	2933	485	1198	16.5%	98	80	\$199,478	\$283,869	\$174,000	\$208,900
APR	2012	2941	498	1696	16.9%	93	66	\$211,657	\$292,297	\$185,000	\$210,000
MAY	2012	2866	574	2270	20.0%	96	51	\$210,276	\$299,100	\$178,000	\$212,900
JUN	2012	2826	555	2825	19.6%	100	37	\$207,985	\$309,361	\$183,000	\$213,900
JUL	2012	2811	537	3362	19.1%	106	40	\$209,484	\$307,882	\$193,000	\$214,950
AUG	2012	2701	602	3964	22.3%	105	50	\$216,516	\$309,427	\$193,350	\$217,900
SEP	2012	2507	548	4512	21.9%	107	41	\$230,593	\$312,053	\$192,700	\$216,900
OCT	2012	2315	532	5044	23.0%	111	49	\$213,577	\$312,793	\$192,750	\$218,895
NOV	2012	2094	478	5522	22.8%	121	57	\$211,015	\$317,777	\$189,000	\$215,000
DEC	2012	1936	453	5975	23.4%	115	60	\$219,388	\$318,986	\$189,509	\$219,250
Change				8.66%				\$210,981		\$187,000	

		Active	Units	YTD	Ratio	DOM	DOM	Average	Average	Median	Median
		Listings	Sold	Sales	Sales/List	Listed	Solds	Sale \$	List \$	Sale \$	List \$
JAN	2013	1940	409	409	21.1%	108	48	\$220,207	\$323,883	\$196,600	\$219,899
FEB	2013	2036	396	805	19.4%	77	37	\$227,936	\$330,321	\$199,400	\$224,000
MAR	2013	2169	473	1278	21.8%	65	43	\$220,763	\$339,447	\$192,000	\$229,900
APR	2013	2209	583	1861	26.4%	59	27	\$212,552	\$343,701	\$190,000	\$235,500
MAY	2013	2275	678	2539	29.8%	62	23	\$243,815	\$345,822	\$211,500	\$238,800
JUN	2013	2451	687	3226	28.0%	63	21	\$239,869	\$343,990	\$211,900	\$239,900
JUL	2013	2549	703	3929	27.6%	65	25	\$248,325	\$346,202	\$215,000	\$243,800
AUG	2013	2613	687	4616	26.3%	71	26	\$241,127	\$351,787	\$212,100	\$247,950
SEP	2013	2685	583	5199	21.7%	74	27	\$238,129	\$344,751	\$211,300	\$244,900
OCT	2013	2612	532	5731	20.4%	80	38	\$239,711	\$342,601	\$213,400	\$240,950
NOV	2013	2448	467	6198	19.1%	92	34	\$241,178	\$346,912	\$215,900	\$244,900
DEC	2013	2378	468	6666	19.7%	88	44	\$242,421	\$355,207	\$218,000	\$250,000
Change				11.56%				\$234,669		\$211,700	

		Active	Units	YTD	Ratio	DOM	DOM	Average	Average	Median	Median
		Listings	Sold	Sales	Sales/List	Active	Solds	Sale \$	Active \$	Sale \$	Active \$
JAN	2014	2398	369	369	15.4%	90	62	\$238,938	\$349,307	\$207,890	\$250,000
FEB	2014	2496	441	810	17.7%	70	58	\$228,431	\$348,995	\$209,000	\$252,995
MAR	2014	2699	568	1378	21.0%	59	52	\$253,598	\$350,901	\$214,950	\$258,900
APR	2014	2764	604	1982	21.9%	58	44	\$243,877	\$360,383	\$213,875	\$263,755
MAY	2014	2930	694	2676	23.7%	63	34	\$243,937	\$362,088	\$218,600	\$262,469
JUN	2014	2951	647	3323	21.9%	68	39	\$249,149	\$368,577	\$228,000	\$266,900
JUL	2014	2947	729	4052	24.7%	69	37	\$259,834	\$364,616	\$227,400	\$269,900
AUG	2014	2885	781	4833	27.1%	75	39	\$259,595	\$370,801	\$230,000	\$276,990
SEP	2014	2687	624	5457	23.2%	81	43	\$238,825	\$373,417	\$214,950	\$279,000
OCT	2014	2457	666	6123	27.1%	89	42	\$256,330	\$374,844	\$222,750	\$279,990
NOV	2014	2236	575	6698	25.7%	107	46	\$252,697	\$381,191	\$225,000	\$284,900
DEC	2014	2084	541	7239	26.0%	104	49	\$265,775	\$381,192	\$235,000	\$284,450
Change				8.60%				\$249,249		\$220,675	

		Active	Units	YTD	Ratio	DOM	DOM	Average	Average	Median	Median
		Listings	Sold	Sales	Sales/List	Active	Solds	Sale \$	Active \$	Sale \$	Active \$
JAN	2015	2032	391	393	19.2%	96	56	\$266,067	\$386,675	\$222,600	\$289,900
FEB	2015	2045	507	900	24.8%	62	56	\$249,885	\$399,566	\$228,500	\$299,900
MAR	2015	2150	690	1590	32.1%	40	39	\$255,862	\$414,280	\$232,084	\$304,900
APR	2015	2097	788	2378	37.6%	55	22	\$253,049	\$421,134	\$225,000	\$308,900
MAY	2015	2132	778	3156	36.5%	57	24	\$257,623	\$448,264	\$231,000	\$312,900
JUN	2015	2179	938	4094	43.0%	60	21	\$275,199	\$451,109	\$244,950	\$319,900
JUL	2015	2160	924	5018	42.8%	64	21	\$265,697	\$456,155	\$234,650	\$324,000
AUG	2015	2071	872	5890	42.1%	68	22	\$267,534	\$451,730	\$235,000	\$319,900
SEP	2015	1964	762	6652	38.8%	75	26	\$273,765	\$458,338	\$241,500	\$322,650
OCT	2015	1802	676	7328	37.5%	76	25	\$271,714	\$475,599	\$239,900	\$325,000
NOV	2015	1640	478	7806	29.1%	81	23	\$276,913	\$477,061	\$246,250	\$320,000
DEC	2015	1539	621	8427	40.4%	83	27	\$279,085	\$470,355	\$246,000	\$315,000
Change				16.41%				\$266,033		\$234,825	

		Active	Units	YTD	Ratio	DOM	DOM	Average	Average	Median	Median
		Listings	Sold	Sales	Sales/List	Active	Solds	Sale \$	Active \$	Sale \$	Active \$
JAN	2016	1507	456	456	30.3%	30	26	\$271,388	\$271,485	\$245,325	\$245,325
FEB	2016	1586	496	952	31.3%	19	26	\$276,951	\$276,713	\$252,750	\$252,750
MAR	2016	1695	733	1685	43.2%	46	17	\$268,781	\$490,104	\$243,000	\$347,900
APR	2016	1834	735	2420	40.1%	43	14	\$274,841	\$489,931	\$250,000	\$347,900
MAY	2016	1945	830	3250	42.7%	49	11	\$283,659	\$478,089	\$255,000	\$345,000
JUN	2016	2036	932	4182	45.8%	48	11	\$288,972	\$480,032	\$258,320	\$339,900
JUL	2016	2064	842	5024	40.8%	51	16	\$296,943	\$478,392	\$255,750	\$339,000
AUG	2016	2024	934	5958	46.1%	61	16	\$295,788	\$478,025	\$269,900	\$336,400
SEP	2016	1922	855	6813	44.5%	54	18	\$291,963	\$491,825	\$255,500	\$339,900
OCT	2016	1842	673	7486	36.5%	57	20	\$278,478	\$489,503	\$250,000	\$339,900
NOV	2016	1548	687	8173	44.4%	73	20	\$291,766	\$499,118	\$255,000	\$345,450
DEC	2016	1526	694	8867	45.5%	74	28	\$287,473	\$502,718	\$259,000	\$348,950
Change				5.22%				\$283,917		\$255,000	

		Active	Units	YTD	Ratio	DOM	DOM	Average	Average	Median	Median
		Listings	Sold	Sales	Sales/List	Active	Solds	Sale \$	Active \$	Sale \$	Active \$
JAN	2017	1406	495	495	35.2%	53	29	\$287,199	\$525,308	\$257,000	\$360,000
FEB	2017	1451	519	1014	35.8%	40	32	\$294,075	\$530,601	\$260,000	\$365,000
MAR	2017	1513	676	1690	44.7%	36	18	\$292,029	\$550,606	\$263,100	\$375,000
APR	2017	1633	707	2397	43.3%	38	11	\$302,106	\$542,513	\$270,000	\$371,990
MAY	2017										
JUN	2017										
JUL	2017										
AUG	2017										
SEP	2017										
OCT	2017										
NOV	2017										
DEC	2017										
Change				-0.95%				\$293,852		\$261,550	

Residential-Single Family -- Utah and Juab Counties

		Active	Units	YTD	Ratio	Average
		Listings	Sold	Sales	Sales/List	Sale \$
JAN	2010	3079	241	241	7.8%	\$229,000
FEB	2010	3242	241	482	7.4%	\$224,900
MAR	2010	3376	357	839	10.6%	\$224,900
APR	2010	3271	391	1230	12.0%	\$224,900
MAY	2010	3367	379	1609	11.3%	\$220,000
JUN	2010	3382	377	1986	11.1%	\$220,000
JUL	2010	3380	294	2280	8.7%	\$218,900
AUG	2010	3329	322	2602	9.7%	\$215,900
SEP	2010	3205	289	2891	9.0%	\$214,900
OCT	2010	3167	287	3178	9.1%	\$213,900
NOV	2010	3135	298	3476	9.5%	\$209,900
DEC	2010	3006	305	3781	10.1%	\$209,900

		Active	Units	YTD	Ratio	Average
		Listings	Sold	Sales	Sales/List	Sale \$
JAN	2011	3020	255	255	8.4%	\$210,900
FEB	2011	2989	289	544	9.7%	\$214,900
MAR	2011	2989	387	931	12.9%	\$214,900
APR	2011	2952	369	1300	12.5%	\$215,000
MAY	2011	2976	403	1703	13.5%	\$218,900
JUN	2011	2947	454	2157	15.4%	\$218,900
JUL	2011	2845	367	2524	12.9%	\$216,000
AUG	2011	2782	455	2979	16.4%	\$219,000
SEP	2011	2742	378	3357	13.8%	\$219,000
OCT	2011	2568	353	3710	13.7%	\$219,000
NOV	2011	2515	343	4053	13.6%	\$219,500
DEC	2011	2512	397	4450	15.8%	\$219,900
		Change		17.69%		

		Active	Units	YTD	Ratio	Average	Average	Median	Median
		Listings	Sold	Sales	Sales/List	Sale \$	List \$	Sale \$	List \$
JAN	2012	2421	259	259	10.7%	\$213,744	\$293,167	\$182,500	\$218,900
FEB	2012	2308	315	574	13.6%	\$221,058	\$304,118	\$194,800	\$219,900
MAR	2012	2377	381	955	16.0%	\$215,646	\$313,307	\$187,900	\$222,000
APR	2012	2387	395	1350	16.5%	\$229,332	\$323,121	\$200,000	\$226,900
MAY	2012	2304	455	1805	19.7%	\$229,142	\$333,556	\$195,000	\$229,900
JUN	2012	2269	444	2249	19.6%	\$223,330	\$346,773	\$195,000	\$230,000
JUL	2012	2282	422	2671	18.5%	\$226,397	\$342,823	\$203,425	\$230,000
AUG	2012	2221	486	3157	21.9%	\$235,525	\$341,905	\$210,000	\$229,900
SEP	2012	2081	446	3603	21.4%	\$250,149	\$343,369	\$210,000	\$229,900
OCT	2012	1924	415	4018	21.6%	\$231,059	\$344,196	\$208,000	\$230,000
NOV	2012	1716	380	4398	22.1%	\$225,643	\$353,533	\$205,200	\$230,900
DEC	2012	1571	350	4748	22.3%	\$241,615	\$356,611	\$199,200	\$234,999
Change				6.70%		\$228,553		\$199,600	

		Active	Units	YTD	Ratio	Average	Average	Median	Median
		Listings	Sold	Sales	Sales/List	Sale \$	List \$	Sale \$	List \$
JAN	2013	1559	333	333	21.4%	\$235,412	\$364,172	\$209,000	\$239,900
FEB	2013	1645	311	644	18.9%	\$249,677	\$370,897	\$222,739	\$245,000
MAR	2013	1775	378	1022	21.3%	\$238,263	\$378,750	\$213,000	\$250,900
APR	2013	1805	439	1461	24.3%	\$232,769	\$384,114	\$212,000	\$259,900
MAY	2013	1868	543	2004	29.1%	\$266,842	\$384,132	\$229,000	\$263,900
JUN	2013	1983	545	2549	27.5%	\$260,733	\$385,241	\$229,900	\$269,900
JUL	2013	2048	534	3083	26.1%	\$277,254	\$388,556	\$243,500	\$274,900
AUG	2013	2108	530	3613	25.1%	\$266,660	\$394,727	\$235,000	\$274,900
SEP	2013	2175	444	4057	20.4%	\$263,233	\$385,114	\$234,000	\$270,000
OCT	2013	2073	416	4473	20.1%	\$262,687	\$386,834	\$234,450	\$274,900
NOV	2013	1969	377	4850	19.1%	\$258,825	\$389,044	\$235,000	\$275,000
DEC	2013	1914	376	5226	19.6%	\$259,145	\$398,911	\$235,000	\$279,900
Change				10.07%		\$255,958		\$231,950	

		Active	Units	YTD	Ratio	DOM	DOM	Average	Average	Median	Median
		Listings	Sold	Sales	Sales/List	Active	Sold	Sale \$	Active \$	Sale \$	Active \$
JAN	2014	1907	288	288	15.1%	94	64	\$263,417	\$393,801	\$232,000	\$275,000
FEB	2014	1976	345	633	17.5%	71	58	\$247,457	\$394,243	\$228,000	\$279,900
MAR	2014	2134	443	1076	20.8%	64	53	\$279,659	\$396,492	\$232,000	\$284,900
APR	2014	2201	455	1531	20.7%	57	47	\$267,696	\$406,887	\$234,900	\$292,900
MAY	2014	2358	544	2075	23.1%	62	33	\$265,382	\$407,313	\$236,950	\$290,000
JUN	2014	2415	488	2563	20.2%	69	36	\$275,837	\$409,118	\$250,000	\$292,150
JUL	2014	2448	534	3097	21.8%	71	34	\$293,375	\$401,878	\$259,650	\$294,900
AUG	2014	2405	609	3706	25.3%	77	39	\$283,166	\$407,328	\$250,000	\$299,000
SEP	2014	2226	471	4177	21.2%	85	42	\$261,924	\$411,914	\$235,000	\$299,900
OCT	2014	2031	527	4704	25.9%	92	41	\$280,577	\$413,656	\$247,000	\$300,900
NOV	2014	1854	467	5171	25.2%	110	44	\$270,781	\$419,660	\$244,900	\$300,000
DEC	2014	1703	433	5604	25.4%	110	47	\$288,317	\$422,948	\$257,000	\$304,900
		Change		7.23%				\$273,132		\$240,925	

		Active	Units	YTD	Ratio	DOM	DOM	Average	Average	Median	Median
		Listings	Sold	Sales	Sales/List	Active	Sold	Sale \$	Active \$	Sale \$	Active \$
JAN	2015	1678	300	300	17.9%	101	61	\$295,477	\$426,807	\$243,950	\$309,900
FEB	2015	1704	390	690	22.9%	66	56	\$273,085	\$440,218	\$255,250	\$319,900
MAR	2015	1778	527	1217	29.6%	55	41	\$279,825	\$460,583	\$255,000	\$329,000
APR	2015	1758	586	1803	33.3%	59	22	\$279,690	\$464,446	\$253,410	\$330,000
MAY	2015	1803	576	2379	31.9%	60	24	\$287,294	\$494,021	\$267,000	\$335,900
JUN	2015	1887	725	3104	38.4%	61	21	\$302,334	\$488,742	\$270,000	\$338,000
JUL	2015	1878	681	3785	36.3%	68	23	\$299,211	\$493,494	\$268,000	\$339,350
AUG	2015	1806	628	4413	34.8%	71	24	\$301,626	\$487,333	\$274,535	\$334,900
SEP	2015	1722	595	5008	34.6%	77	28	\$300,949	\$493,505	\$269,000	\$338,950
OCT	2015	1604	510	5518	31.8%	77	30	\$303,312	\$507,279	\$271,750	\$339,900
NOV	2015	1451	380	5898	26.2%	82	26	\$301,935	\$511,319	\$275,000	\$338,900
DEC	2015	1330	474	6372	35.6%	87	29	\$309,261	\$509,706	\$275,500	\$338,650
		Change		13.70%				\$294,500		\$268,500	

		Active Listings	Units Sold	YTD Sales	Ratio Sales/List	DOM Active	DOM Sold	Average Sale \$	Average Active \$	Median Sale \$	Median Active \$
JAN	2016	1302	366	366	28.1%	29	33	\$293,725	\$422,242	\$263,500	\$358,900
FEB	2016	1383	406	772	29.4%	24	34	\$299,266	\$410,256	\$270,000	\$354,900
MAR	2016	1503	544	1316	36.2%	49	21	\$297,774	\$523,038	\$270,000	\$360,900
APR	2016	1608	550	1866	34.2%	48	16	\$303,817	\$527,091	\$276,525	\$362,900
MAY	2016	1703	620	2486	36.4%	53	12	\$315,155	\$514,266	\$289,450	\$359,900
JUN	2016	1778	724	3210	40.7%	53	12	\$316,594	\$517,997	\$287,250	\$359,000
JUL	2016	1821	620	3830	34.0%	55	19	\$336,169	\$512,928	\$293,500	\$354,400
AUG	2016	1778	714	4544	40.2%	65	19	\$328,796	\$514,355	\$303,875	\$354,000
SEP	2016	1711	651	5195	38.0%	57	20	\$321,889	\$524,976	\$285,000	\$356,495
OCT	2016	1604	505	5700	31.5%	60	24	\$307,832	\$529,739	\$274,000	\$359,945
NOV	2016	1308	526	6226	40.2%	82	25	\$321,021	\$548,013	\$279,900	\$373,272
DEC	2016	1289	514	6740	39.9%	84	35	\$318,382	\$552,460	\$284,674	\$375,000
Change				5.78%				\$313,368		\$282,287	

		Active Listings	Units Sold	YTD Sales	Ratio Sales/List	DOM Active	DOM Solds	Average Sale \$	Average Active \$	Median Sale \$	Median Active \$
JAN	2017	1230	356	356	28.9%	55	34	\$322,175	\$566,370	\$285,000	\$381,660
FEB	2017	1307	391	747	29.9%	41	40	\$322,309	\$562,483	\$287,000	\$380,000
MAR	2017	1361	496	1243	36.4%	40	27	\$323,290	\$582,889	\$296,500	\$389,000
APR	2017	1429	507	1750	35.5%	40	13	\$340,067	\$583,316	\$305,000	\$394,170
MAY	2017										
JUN	2017										
JUL	2017										
AUG	2017										
SEP	2017										
OCT	2017										
NOV	2017										
DEC	2017										
Change				-6.22%				\$326,960		\$291,750	

Condominium -- Utah and Juab Counties

		Active	Units	YTD	Ratio	Average
		Listings	Sold	Sales	Sales/List	Sale \$
JAN	2010	379	18	18	4.7%	\$144,900
FEB	2010	440	19	37	4.3%	\$144,900
MAR	2010	447	41	78	9.2%	\$144,900
APR	2010	427	53	131	12.4%	\$140,900
MAY	2010	439	57	188	13.0%	\$139,900
JUN	2010	442	29	217	6.6%	\$138,900
JUL	2010	423	31	248	7.3%	\$139,900
AUG	2010	390	43	291	11.0%	\$135,880
SEP	2010	380	31	322	8.2%	\$135,430
OCT	2010	373	29	351	7.8%	\$134,900
NOV	2010	374	28	379	7.5%	\$129,900
DEC	2010	362	31	410	8.6%	\$129,900

		Active	Units	YTD	Ratio	Average
		Listings	Sold	Sales	Sales/List	Sale \$
JAN	2011	391	39	39	10.0%	\$129,900
FEB	2011	395	23	62	5.8%	\$129,900
MAR	2011	384	36	98	9.4%	\$129,900
APR	2011	372	35	133	9.4%	\$128,950
MAY	2011	376	42	175	11.2%	\$129,000
JUN	2011	364	40	215	11.0%	\$129,000
JUL	2011	346	52	267	15.0%	\$129,950
AUG	2011	343	36	303	10.5%	\$129,900
SEP	2011	319	30	333	9.4%	\$130,000
OCT	2011	278	42	375	15.1%	\$129,900
NOV	2011	264	19	394	7.2%	\$129,950
DEC	2011	249	24	418	9.6%	\$129,900
		Change		1.95%		

		Active	Units	YTD	Ratio	Average	Average	Median	Median
		Listings	Sold	Sales	Sales/List	Sale \$	List \$	Sale \$	List \$
JAN	2012	241	30	30	12.4%	\$113,376	\$158,238	\$100,070	\$129,900
FEB	2012	251	31	61	12.4%	\$109,529	\$156,493	\$97,500	\$129,500
MAR	2012	250	38	99	15.2%	\$124,883	\$159,289	\$110,000	\$129,900
APR	2012	235	43	142	18.3%	\$136,913	\$158,808	\$113,000	\$129,900
MAY	2012	239	51	193	21.3%	\$122,921	\$152,239	\$119,000	\$129,900
JUN	2012	219	42	235	19.2%	\$141,819	\$148,094	\$121,500	\$129,900
JUL	2012	214	49	284	22.9%	\$134,419	\$148,848	\$117,000	\$129,900
AUG	2012	201	47	331	23.4%	\$121,722	\$153,590	\$114,900	\$134,900
SEP	2012	180	37	368	20.6%	\$133,518	\$155,098	\$124,000	\$135,000
OCT	2012	171	55	423	32.2%	\$137,035	\$155,098	\$117,000	\$135,000
NOV	2012	162	28	451	17.3%	\$123,462	\$153,903	\$110,950	\$132,400
DEC	2012	155	39	490	25.2%	\$126,932	\$153,682	\$113,500	\$132,400
Change				17.22%		\$127,211		\$114,200	

		Active	Units	YTD	Ratio	Average	Average	Median	Median
		Listings	Sold	Sales	Sales/List	Sale \$	List \$	Sale \$	List \$
JAN	2013	168	24	24	14.3%	\$147,378	\$154,270	\$121,225	\$129,950
FEB	2013	169	33	57	19.5%	\$126,095	\$154,937	\$116,000	\$136,900
MAR	2013	189	29	86	15.3%	\$139,659	\$158,157	\$120,000	\$134,900
APR	2013	195	58	144	29.7%	\$133,195	\$157,344	\$127,635	\$132,900
MAY	2013	189	54	198	28.6%	\$139,119	\$162,633	\$127,250	\$132,500
JUN	2013	218	50	248	22.9%	\$143,980	\$156,323	\$129,700	\$134,149
JUL	2013	206	61	309	29.6%	\$138,363	\$158,453	\$131,000	\$134,900
AUG	2013	209	59	368	28.2%	\$142,444	\$157,740	\$130,000	\$134,900
SEP	2013	205	59	427	28.8%	\$144,716	\$156,090	\$124,000	\$135,000
OCT	2013	225	50	477	22.2%	\$146,407	\$156,297	\$130,500	\$139,900
NOV	2013	194	25	502	12.9%	\$160,312	\$159,180	\$137,000	\$139,950
DEC	2013	172	28	530	16.3%	\$141,485	\$157,997	\$127,175	\$137,750
Change				8.16%		\$141,929		\$127,443	

		Active	Units	YTD	Ratio	DOM	DOM	Average	Average	Median	Median
		Listings	Sold	Sales	Sales/List	Active	SOLD	Sale \$	List \$	Sale \$	List \$
JAN	2014	183	31	31	16.9%	96	46	\$140,480	\$159,263	\$122,000	\$139,900
FEB	2014	210	41	72	19.5%	54	74	\$132,613	\$155,418	\$132,000	\$139,900
MAR	2014	228	45	117	19.7%	50	52	\$139,244	\$159,003	\$133,000	\$139,900
APR	2014	236	48	165	20.3%	59	30	\$148,085	\$154,659	\$130,500	\$136,200
MAY	2014	249	53	218	21.3%	72	51	\$144,446	\$153,708	\$139,000	\$135,000
JUN	2014	221	56	274	25.3%	79	44	\$133,335	\$156,900	\$132,000	\$134,900
JUL	2014	202	69	343	34.2%	76	48	\$138,225	\$153,054	\$130,000	\$133,450
AUG	2014	174	55	398	31.6%	70	54	\$140,653	\$160,802	\$130,000	\$134,700
SEP	2014	171	59	457	34.5%	75	49	\$142,737	\$157,918	\$132,000	\$134,000
OCT	2014	147	50	507	34.0%	69	63	\$142,409	\$159,300	\$133,000	\$133,900
NOV	2014	134	33	540	24.6%	77	54	\$151,170	\$168,307	\$135,000	\$133,000
DEC	2014	130	39	579	30.0%	81	47	\$140,485	\$170,193	\$127,000	\$136,900
				9.25%				\$141,157			\$132,000

		Active	Units	YTD	Ratio	DOM	DOM	Average	Average	Median	Median
		Listings	Sold	Sales	Sales/List	Active	SOLD	Sale \$	List \$	Sale \$	List \$
JAN	2015	141	33	33	23.4%	56	56	\$138,450	\$165,477	\$133,000	\$140,000
FEB	2015	141	34	67	24.1%	43	50	\$135,796	\$172,516	\$129,250	\$146,900
MAR	2015	173	57	124	32.9%	28	39	\$153,638	\$170,528	\$133,900	\$144,900
APR	2015	153	64	188	41.8%	36	28	\$148,350	\$173,958	\$139,900	\$144,900
MAY	2015	142	80	268	56.3%	44	23	\$146,612	\$161,466	\$143,500	\$139,949
JUN	2015	120	83	351	69.2%	53	22	\$156,758	\$171,193	\$145,000	\$150,000
JUL	2015	124	107	458	86.3%	45	16	\$149,235	\$173,786	\$139,000	\$140,000
AUG	2015	114	99	557	86.8%	50	17	\$158,524	\$174,693	\$141,700	\$139,949
SEP	2015	91	69	626	75.8%	63	28	\$152,278	\$175,704	\$143,000	\$146,000
OCT	2015	75	68	694	90.7%	59	23	\$144,284	\$189,869	\$138,243	\$155,200
NOV	2015	74	34	728	45.9%	66	43	\$165,374	\$192,399	\$144,769	\$153,600
DEC	2015	82	65	793	79.3%	49	22	\$154,189	\$197,369	\$139,000	\$155,450
				36.96%				\$150,291			\$139,450

		Active	Units	YTD	Ratio	DOM	DOM	Average	Average	Median	Median
		Listings	Sold	Sales	Sales/List	Active	SOLD	Sale \$	List \$	Sale \$	List \$
JAN	2016	80	37	37	46.3%	24	22	\$142,359	\$184,410	\$138,900	\$149,900
FEB	2016	78	36	73	46.2%	22	12	\$138,378	\$171,554	\$143,000	\$147,900
MAR	2016	68	72	145	105.9%	29	8	\$152,366	\$210,694	\$151,250	\$155,950
APR	2016	89	80	225	89.9%	21	12	\$157,004	\$196,893	\$141,500	\$162,000
MAY	2016	91	83	308	91.2%	25	10	\$166,307	\$194,751	\$155,000	\$165,000
JUN	2016	99	82	390	82.8%	29	6	\$162,045	\$187,998	\$155,000	\$172,900
JUL	2016	86	84	474	97.7%	38	9	\$160,025	\$188,077	\$154,000	\$179,900
AUG	2016	102	84	558	82.4%	33	15	\$157,466	\$180,883	\$152,000	\$179,900
SEP	2016	77	68	626	88.3%	41	7	\$157,589	\$180,753	\$155,000	\$179,900
OCT	2016	88	65	691	73.9%	42	10	\$160,209	\$183,439	\$153,000	\$182,900
NOV	2016	76	54	745	71.1%	35	12	\$171,257	\$200,754	\$148,500	\$185,900
DEC	2016	75	74	819	98.7%	41	18	\$170,157	\$188,797	\$178,000	\$185,900
				3.28%				\$157,930		\$152,500	

		Active	Units	YTD	Ratio	DOM	DOM	Average	Average	Median	Median	
		Listings	Sold	Sales	Sales/List	Active	Solds	Sale \$	Active \$	Sale \$	Active \$	
JAN	2017	48	52	52	108.3%	35	8	\$170,925	\$194,413	\$167,000	\$197,400	
FEB	2017	35	46	98	131.4%	12	11	\$176,148	\$208,459	\$161,000	\$189,900	
MAR	2017	29	64	162	220.7%	15	5	\$177,122	\$208,189	\$172,250	\$180,000	
APR	2017	60	89	251	148.3%	15	4	\$178,027	\$216,480	\$180,000	\$202,900	
MAY	2017											
JUN	2017											
JUL	2017											
AUG	2017											
SEP	2017											
OCT	2017											
NOV	2017											
DEC	2017											
		Change			11.56%				\$175,556		\$169,625	

Homes From \$250,000-\$499,999– Utah and Juab Counties

		Active	Units	YTD	Ratio	DOM	DOM
		Listings	Sold	Sales	Sales/List	Active	Solds
JAN	2010	1037	74	74	7.1%	114	138
FEB	2010	1035	63	137	6.1%	118	142
MAR	2010	1041	87	224	8.4%	104	108
APR	2010	1024	106	330	10.4%	105	99
MAY	2010	989	97	427	9.8%	110	89
JUN	2010	972	120	547	12.3%	116	93
JUL	2010	925	92	639	9.9%	117	69
AUG	2010	878	97	736	11.0%	113	97
SEP	2010	836	75	811	9.0%	118	109
OCT	2010	794	72	883	9.1%	116	87
NOV	2010	756	80	963	10.6%	125	68
DEC	2010	701	81	1044	11.6%	125	104

		Active	Units	YTD	Ratio	DOM	DOM
		Listings	Sold	Sales	Sales/List	Active	Solds
JAN	2011	712	69	69	9.7%	122	86
FEB	2011	722	71	140	9.8%	122	79
MAR	2011	747	71	211	9.5%	91	106
APR	2011	749	91	302	12.1%	89	82
MAY	2011	774	102	404	13.2%	94	78
JUN	2011	783	101	505	12.9%	103	69
JUL	2011	726	97	602	13.4%	107	46
AUG	2011	731	114	716	15.6%	116	65
SEP	2011	731	89	805	12.2%	104	93
OCT	2011	698	82	887	11.7%	108	82
NOV	2011	677	88	975	13.0%	120	77
DEC	2011	692	92	1067	13.3%	125	81
		Change		2.20%			

		Active	Units	YTD	Ratio	DOM	DOM
		Listings	Sold	Sales	Sales/List	Active	Solds
JAN	2012	671	52	52	7.7%	133	73
FEB	2012	670	78	130	11.6%	118	62
MAR	2012	706	71	201	10.1%	99	76
APR	2012	728	99	300	13.6%	98	102
MAY	2012	735	122	422	16.6%	89	64
JUN	2012	750	102	524	13.6%	99	63
JUL	2012	742	114	638	15.4%	98	59
AUG	2012	717	147	785	20.5%	102	48
SEP	2012	666	132	917	19.8%	107	46
OCT	2012	643	125	1042	19.4%	109	53
NOV	2012	556	132	1174	23.7%	120	59
DEC	2012	537	106	1280	19.7%	112	78
		Change		19.96%			

		Active	Units	YTD	Ratio	DOM	DOM
		Listings	Sold	Sales	Sales/List	Active	Solds
JAN	2013	550	111	111	20.2%	105	68
FEB	2013	601	106	217	17.6%	73	39
MAR	2013	676	110	327	16.3%	58	60
APR	2013	744	126	453	16.9%	51	38
MAY	2013	781	181	634	23.2%	59	26
JUN	2013	879	203	837	23.1%	61	22
JUL	2013	922	211	1048	22.9%	65	30
AUG	2013	973	208	1256	21.4%	71	25
SEP	2013	991	171	1427	17.3%	77	27
OCT	2013	975	159	1586	16.3%	83	43
NOV	2013	935	143	1729	15.3%	97	33
DEC	2013	957	154	1883	16.1%	90	49
		Change		47.11%			

		Active	Units	YTD	Ratio	DOM	DOM
		Listings	Sold	Sales	Sales/List	Active	Solds
JAN	2014	972	112	112	11.5%	96	70
FEB	2014	1014	127	239	12.5%	73	72
MAR	2014	1121	157	396	14.0%	64	63
APR	2014	1153	174	570	15.1%	57	50
MAY	2014	1227	210	780	17.1%	62	41
JUN	2014	1265	220	1000	17.4%	70	39
JUL	2014	1302	256	1256	19.7%	70	37
AUG	2014	1348	263	1519	19.5%	77	49
SEP	2014	1251	179	1698	14.3%	84	42
OCT	2014	1177	213	1911	18.1%	92	47
NOV	2014	1101	200	2111	18.2%	111	41
DEC	2014	1010	212	2323	21.0%	119	55
		Change		23.37%			

		Active	Units	YTD	Ratio	DOM	DOM
		Listings	Sold	Sales	Sales/List	Active	Solds
JAN	2015	1018	130	130	12.8%	116	58
FEB	2015	1080	188	318	17.4%	70	62
MAR	2015	1110	260	578	23.4%	54	47
APR	2015	1068	289	867	27.1%	61	35
MAY	2015	1121	290	1157	25.9%	62	27
JUN	2015	1160	384	1541	33.1%	63	29
JUL	2015	1179	372	1913	31.6%	68	35
AUG	2015	1140	349	2262	30.6%	70	30
SEP	2015	1085	316	2578	29.1%	77	31
OCT	2015	1001	266	2844	26.6%	75	39
NOV	2015	889	194	3038	21.8%	70	36
DEC	2015	886	272	3310	30.7%	84	35
		Change		42.49%			

		Active	Units	YTD	Ratio	DOM	DOM
		Listings	Sold	Sales	Sales/List	Active	Solds
JAN	2016	920	195	195	21.2%	30	34
FEB	2016	938	231	426	24.6%	24	42
MAR	2016	1011	319	745	31.6%	47	29
APR	2016	1065	342	1087	32.1%	48	19
MAY	2016	1131	398	1485	35.2%	51	14
JUN	2016	1162	451	1936	38.8%	50	17
JUL	2016	1197	374	2310	31.2%	52	20
AUG	2016	1152	481	2791	41.8%	61	22
SEP	2016	1107	387	3178	35.0%	53	24
OCT	2016	1079	298	3476	27.6%	52	27
NOV	2016	932	308	3784	33.0%	70	28
DEC	2016	911	343	4127	37.7%	72	39
		Change		24.68%			

		Active	Units	YTD	Ratio	DOM	DOM
		Listings	Sold	Sales	Sales/List	Active	Solds
JAN	2017	876	228	228	26.0%	41	34
FEB	2017	908	247	475	27.2%	34	47
MAR	2017	938	349	824	37.2%	34	34
APR	2017	1011	372	1196	36.8%	35	16
MAY	2017						
JUN	2017						
JUL	2017						
AUG	2017						
SEP	2017						
OCT	2017						
NOV	2017						
DEC	2017						
		Change		10.03%			

Homes Over \$500,000– Utah and Juab Counties

		Active	Homes	YTD	Sales %	Active	Sold
		Listings	Sold	Sales	of Listings	DOM	DOM
JAN	2010	263	9	9	3.4%	114	66
FEB	2010	260	13	22	5.0%	222	156
MAR	2010	271	16	38	5.9%	215	173
APR	2010	264	9	47	3.4%	208	127
MAY	2010	275	15	62	5.5%	150	123
JUN	2010	274	10	72	3.6%	154	158
JUL	2010	280	13	85	4.6%	152	74
AUG	2010	266	15	100	5.6%	168	98
SEP	2010	253	8	108	3.2%	148	74
OCT	2010	245	16	124	6.5%	172	87
NOV	2010	240	11	135	4.6%	185	222
DEC	2010	226	11	146	4.9%	176	191

		Active	Homes	YTD	Sales %	Active	Sold
		Listings	Sold	Sales	of Listings	DOM	DOM
JAN	2011	226	6	6	2.7%	161	362
FEB	2011	227	9	15	4.0%	161	221
MAR	2011	247	8	23	3.2%	153	82
APR	2011	242	13	36	5.4%	144	120
MAY	2011	279	11	47	3.9%	125	231
JUN	2011	286	13	60	4.5%	123	119
JUL	2011	285	11	71	3.9%	136	86
AUG	2011	278	15	86	5.4%	136	101
SEP	2011	261	15	101	5.7%	147	110
OCT	2011	236	10	111	4.2%	177	155
NOV	2011	218	10	121	4.6%	203	158
DEC	2011	199	11	132	5.5%	214	21
		Change		-9.59%			

		Active Listings	Homes Sold	YTD Sales	Sales % of Listings	Active DOM	Sold DOM
JAN	2012	188	11	11	5.9%	232	120
FEB	2012	192	10	21	5.2%	242	97
MAR	2012	211	16	37	7.6%	219	120
APR	2012	231	11	48	4.8%	137	193
MAY	2012	239	15	63	6.3%	115	65
JUN	2012	240	14	77	5.8%	112	87
JUL	2012	231	11	88	4.8%	123	32
AUG	2012	239	14	102	5.9%	132	98
SEP	2012	218	19	121	8.7%	140	136
OCT	2012	202	13	134	6.4%	146	79
NOV	2012	191	6	140	3.1%	169	137
DEC	2012	179	12	152	6.7%	173	80
Change				15.15%			

		Active Listings	Homes Sold	YTD Sales	Sales % of Listings	Active DOM	Sold DOM
JAN	2013	195	8	8	4.1%	174	40
FEB	2013	206	11	19	5.3%	150	118
MAR	2013	250	12	31	4.8%	98	26
APR	2013	253	13	44	5.1%	84	101
MAY	2013	191	33	77	17.3%	72	99
JUN	2013	269	24	101	8.9%	90	29
JUL	2013	280	33	134	11.8%	94	75
AUG	2013	281	31	165	11.0%	111	68
SEP	2013	277	20	185	7.2%	114	35
OCT	2013	255	19	204	7.5%	130	76
NOV	2013	235	16	220	6.8%	150	66
DEC	2013	234	13	233	5.6%	164	77
Change				53.29%			

		Active Listings	Homes Sold	YTD Sales	Sales % of Listings	Active DOM	Sold DOM
JAN	2014	230	10	10	4.3%	158	66
FEB	2014	243	10	20	4.1%	125	74
MAR	2014	278	24	44	8.6%	105	167
APR	2014	312	14	58	4.5%	91	102
MAY	2014	333	24	82	7.2%	84	37
JUN	2014	346	24	106	6.9%	94	55
JUL	2014	332	33	139	9.9%	105	63
AUG	2014	337	42	181	12.5%	113	54
SEP	2014	321	18	199	5.6%	126	75
OCT	2014	291	36	235	12.4%	148	46
NOV	2014	263	13	248	4.9%	164	113
DEC	2014	240	21	269	8.8%	144	77
Change				15.45%			

		Active Listings	Homes Sold	YTD Sales	Sales % of Listings	Active DOM	Sold DOM
JAN	2015	239	18	18	7.5%	153	104
FEB	2015	265	15	33	5.7%	140	120
MAR	2015	312	28	61	9.0%	93	185
APR	2015	326	27	88	8.3%	80	35
MAY	2015	351	32	120	9.1%	84	39
JUN	2015	376	53	173	14.1%	84	40
JUL	2015	382	38	211	9.9%	100	86
AUG	2015	340	42	253	12.4%	111	39
SEP	2015	325	39	292	12.0%	127	76
OCT	2015	310	35	327	11.3%	140	106
NOV	2015	257	25	352	9.7%	159	70
DEC	2015	235	29	381	12.3%	153	111
Change				41.64%			

		Active Listings	Homes Sold	YTD Sales	Sales % of Listings	Active DOM	Sold DOM
JAN	2016	207	21	21	10.1%	35	70
FEB	2016	205	22	43	10.7%	30	48
MAR	2016	324	27	70	8.3%	74	98
APR	2016	371	33	103	8.9%	61	46
MAY	2016	393	42	145	10.7%	73	29
JUN	2016	392	54	199	13.8%	85	64
JUL	2016	397	69	268	17.4%	96	45
AUG	2016	400	54	322	13.5%	93	77
SEP	2016	397	51	373	12.8%	97	79
OCT	2016	354	35	408	9.9%	113	40
NOV	2016	285	46	454	16.1%	131	86
DEC	2016	288	35	489	12.2%	134	90
Change				28.35%			

		Active Listings	Units Sold	YTD Sales	Ratio Sales/List	DOM Active	DOM Solds
JAN	2017	292	37	37	12.7%	146	55
FEB	2017	311	38	75	12.2%	119	92
MAR	2017	375	35	110	9.3%	60	36
APR	2017	405	46	156	11.4%	56	97
MAY	2017						
JUN	2017						
JUL	2017						
AUG	2017						
SEP	2017						
OCT	2017						
NOV	2017						
DEC	2017						
Change				51.46%			

Homes Over \$1,000,000– Utah and Juab Counties

		Active	Homes	YTD	Sales %	Active	Sold
		Listings	Sold	Sales	of Listings	DOM	DOM
JAN	2010	85	0	0	0.0%	312	0
FEB	2010	86	2	2	2.3%	304	101
MAR	2010	95	1	3	1.1%	290	136
APR	2010	91	1	4	1.1%	277	518
MAY	2010	90	1	5	1.1%	315	0
JUN	2010	94	0	5	0.0%	292	0
JUL	2010	92	0	5	0.0%	296	0
AUG	2010	84	2	7	2.4%	279	368
SEP	2010	79	1	8	1.3%	245	38
OCT	2010	84	2	10	2.4%	271	256
NOV	2010	81	2	12	2.5%	294	1052
DEC	2010	72	0	12	0.0%	277	0

		Active	Homes	YTD	Sales %	Active	Sold
		Listings	Sold	Sales	of Listings	DOM	DOM
JAN	2011	70	2	2	2.9%	286	778
FEB	2011	68	1	3	1.5%	312	452
MAR	2011	70	2	5	2.9%	242	798
APR	2011	73	2	7	2.7%	217	212
MAY	2011	85	3	10	3.5%	213	360
JUN	2011	84	0	10	0.0%	195	0
JUL	2011	91	1	11	1.1%	148	99
AUG	2011	86	0	11	0.0%	176	0
SEP	2011	82	3	14	3.7%	169	361
OCT	2011	74	0	14	0.0%	198	0
NOV	2011	69	0	14	0.0%	210	0
DEC	2011	65	0	14	0.0%	238	0
		Change		16.67%			

		Active Listings	Homes Sold	YTD Sales	Sales % of Listings	Active DOM	Sold DOM
JAN	2012	63	2	2	3.2%	253	224
FEB	2012	64	0	2	0.0%	273	0
MAR	2012	69	1	3	1.4%	257	280
APR	2012	74	1	4	1.4%	232	296
MAY	2012	80	2	6	2.5%	180	358
JUN	2012	75	1	7	1.3%	161	544
JUL	2012	77	0	7	0.0%	155	0
AUG	2012	71	0	7	0.0%	155	0
SEP	2012	63	3	10	4.8%	184	179
OCT	2012	58	1	11	1.7%	211	124
NOV	2012	58	1	12	1.7%	242	149
DEC	2012	54	5	17	9.3%	255	72
Change				21.43%			

		Active Listings	Homes Sold	YTD Sales	Sales % of Listings	Active DOM	Sold DOM
JAN	2013	59	0	0	0.0%	258	0
FEB	2013	59	0	0	0.0%	257	0
MAR	2013	70	1	1	0.0%	240	0
APR	2013	68	0	1	0.0%	225	0
MAY	2013	64	4	5	6.3%	148	145
JUN	2013	66	3	8	4.5%	257	237
JUL	2013	65	3	11	4.6%	153	86
AUG	2013	73	0	11	0.0%	152	0
SEP	2013	68	2	13	2.9%	175	20
OCT	2013	59	1	14	1.7%	186	91
NOV	2013	60	1	15	1.7%	209	532
DEC	2013	62	2	17	3.2%	205	326
Change				0.00%			

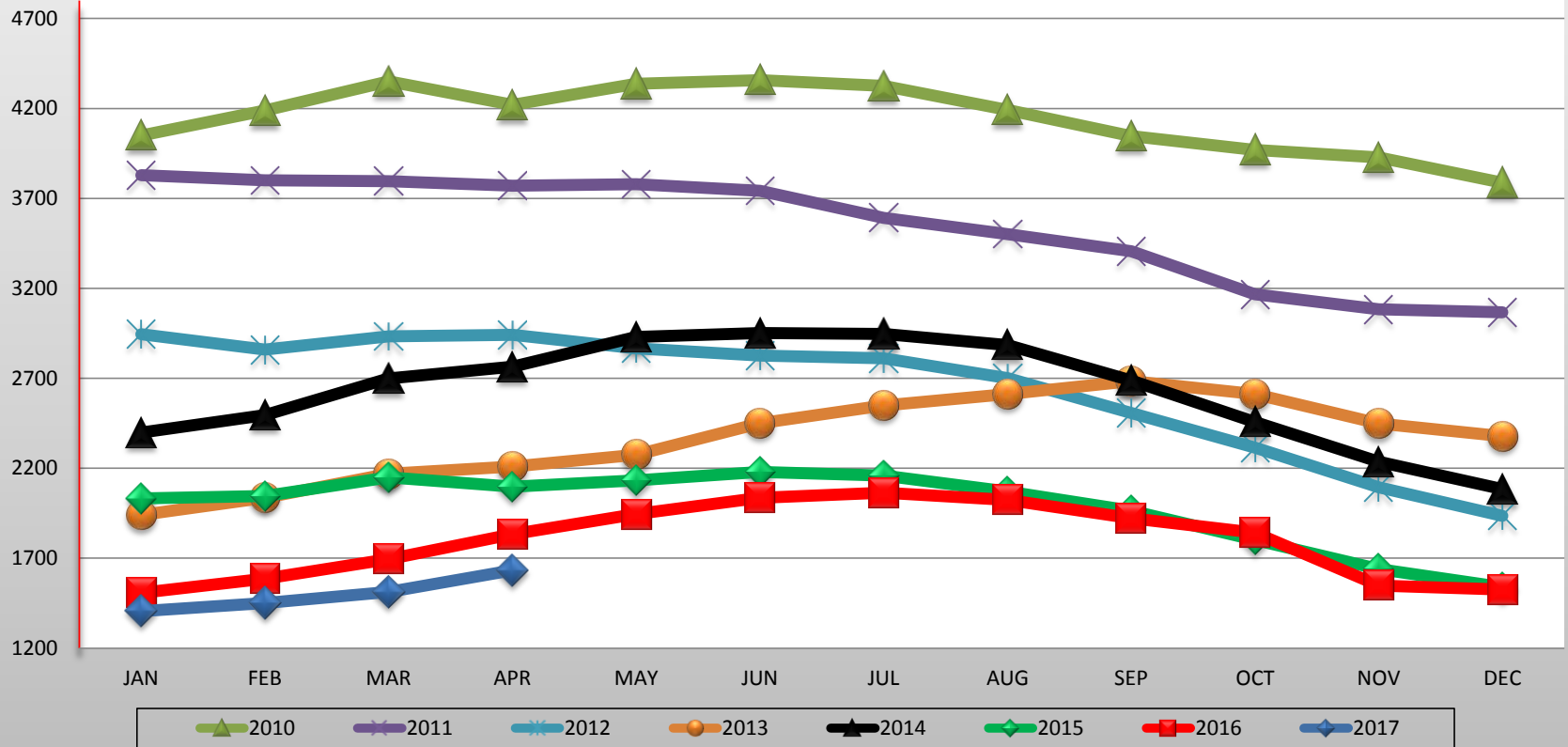
		Active Listings	Homes Sold	YTD Sales	Sales % of Listings	Active DOM	Sold DOM
JAN	2014	62	2	2	3.2%	197	758
FEB	2014	58	0	2	0.0%	204	0
MAR	2014	66	4	6	6.1%	181	440
APR	2014	75	1	7	1.3%	141	699
MAY	2014	86	2	9	2.3%	133	131
JUN	2014	89	0	9	0.0%	119	0
JUL	2014	84	3	12	3.6%	145	28
AUG	2014	81	2	14	2.5%	170	23
SEP	2014	84	2	16	2.4%	170	37
OCT	2014	76	2	18	2.6%	181	45
NOV	2014	72	2	20	2.8%	207	223
DEC	2014	64	3	23	4.7%	224	46
Change				35.29%			

		Active Listings	Homes Sold	YTD Sales	Sales % of Listings	Active DOM	Sold DOM
JAN	2015	70	4	4	5.7%	222	32
FEB	2015	75	0	4	0.0%	204	0
MAR	2015	84	2	6	2.4%	192	45
APR	2015	90	1	7	1.1%	134	4
MAY	2015	108	2	9	1.9%	133	14
JUN	2015	107	3	12	2.8%	118	73
JUL	2015	108	9	21	8.3%	145	190
AUG	2015	99	2	23	2.0%	175	112
SEP	2015	96	4	27	4.2%	197	287
OCT	2015	85	2	29	2.4%	215	89
NOV	2015	77	1	30	1.3%	243	522
DEC	2015	74	4	34	5.4%	251	114
Change				47.83%			

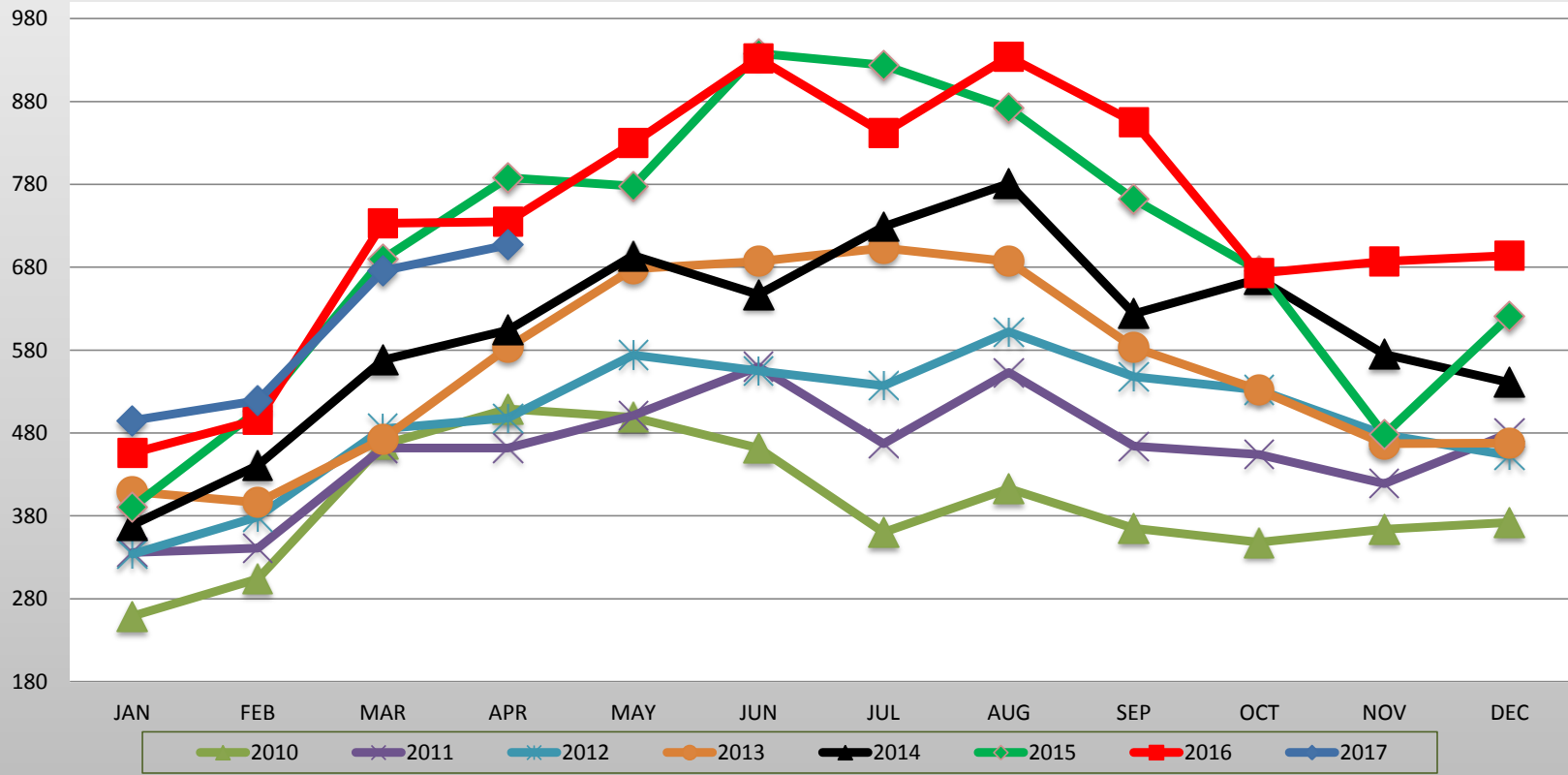
		Active Listings	Homes Sold	YTD Sales	Sales % of Listings	Active DOM	Sold DOM
JAN	2016	72	1	1	1.4%	348	42
FEB	2016	74	2	3	2.7%	338	41
MAR	2016	82	1	4	1.2%	310	143
APR	2016	95	0	4	0.0%	195	0
MAY	2016	87	1	5	1.1%	145	78
JUN	2016	90	1	6	1.1%	128	249
JUL	2016	88	6	12	6.8%	137	50
AUG	2016	85	5	17	5.9%	153	432
SEP	2016	85	3	20	3.5%	165	14
OCT	2016	81	0	20	0.0%	178	0
NOV	2016	71	3	23	4.2%	153	380
DEC	2016	71	1	24	1.4%	159	119
Change				-29.41%			

		Active Listings	Units Sold	YTD Sales	Ratio Sales/List	DOM Active	DOM Solds
JAN	2017	71	2	2	2.8%	173	184
FEB	2017	78	4	6	5.1%	176	137
MAR	2017	89	3	9	3.4%	161	33
APR	2017	94	3	12	3.2%	121	11
MAY	2017						
JUN	2017						
JUL	2017						
AUG	2017						
SEP	2017						
OCT	2017						
NOV	2017						
DEC	2017						
Change				200.00%			

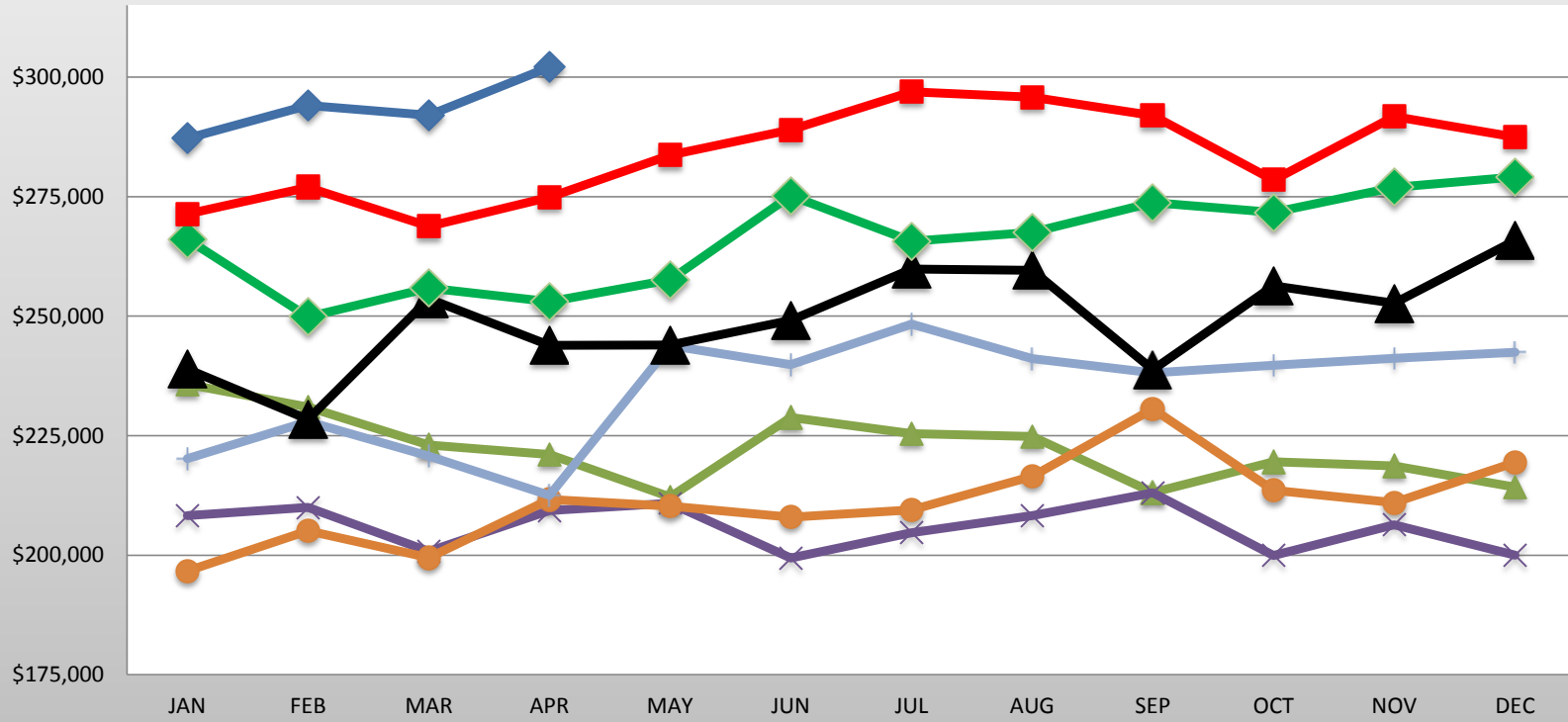
All Active Listings 2010-2017



All Units Sold 2010- 2017

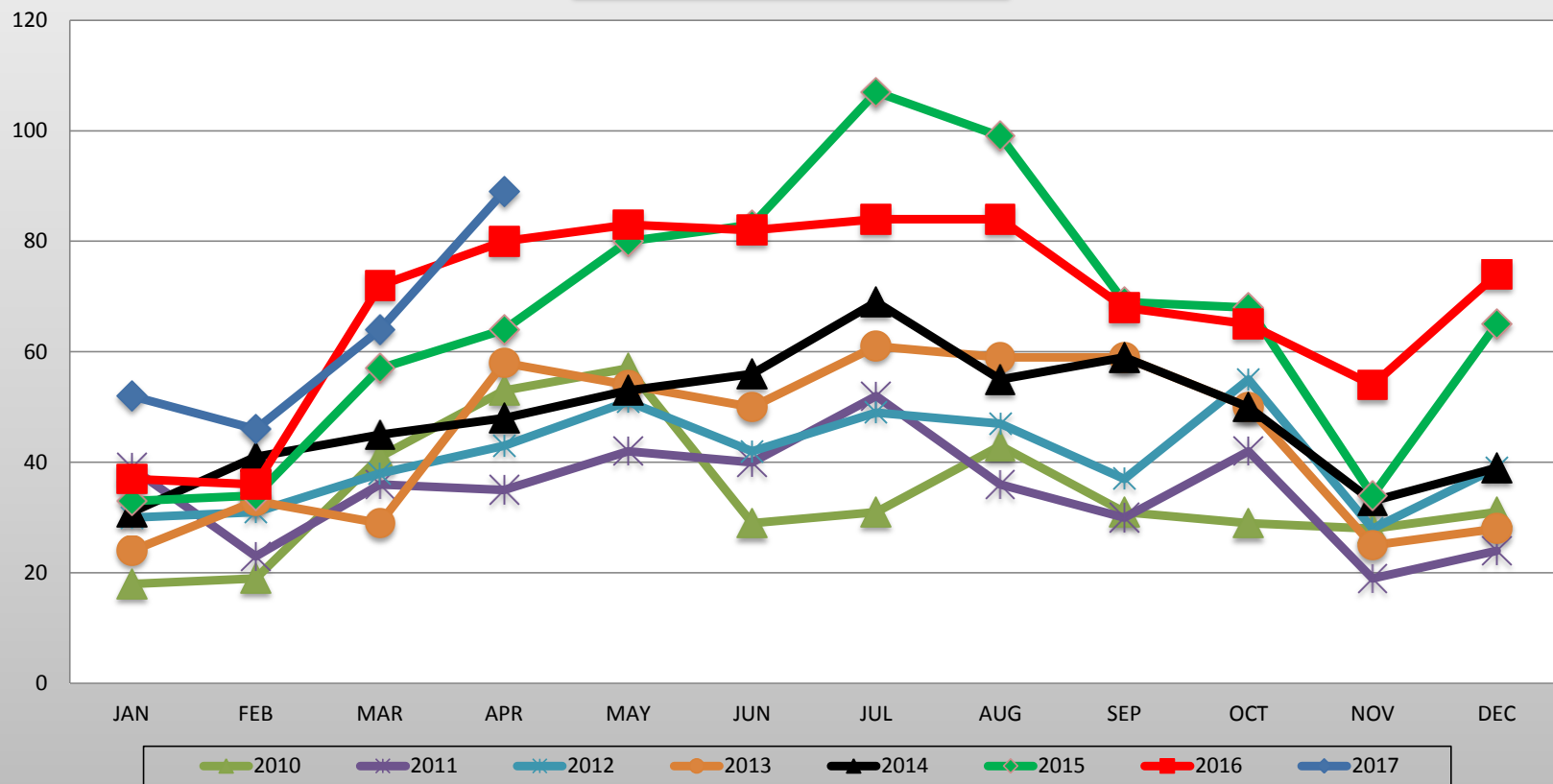


Average Sale Price 2010-2017

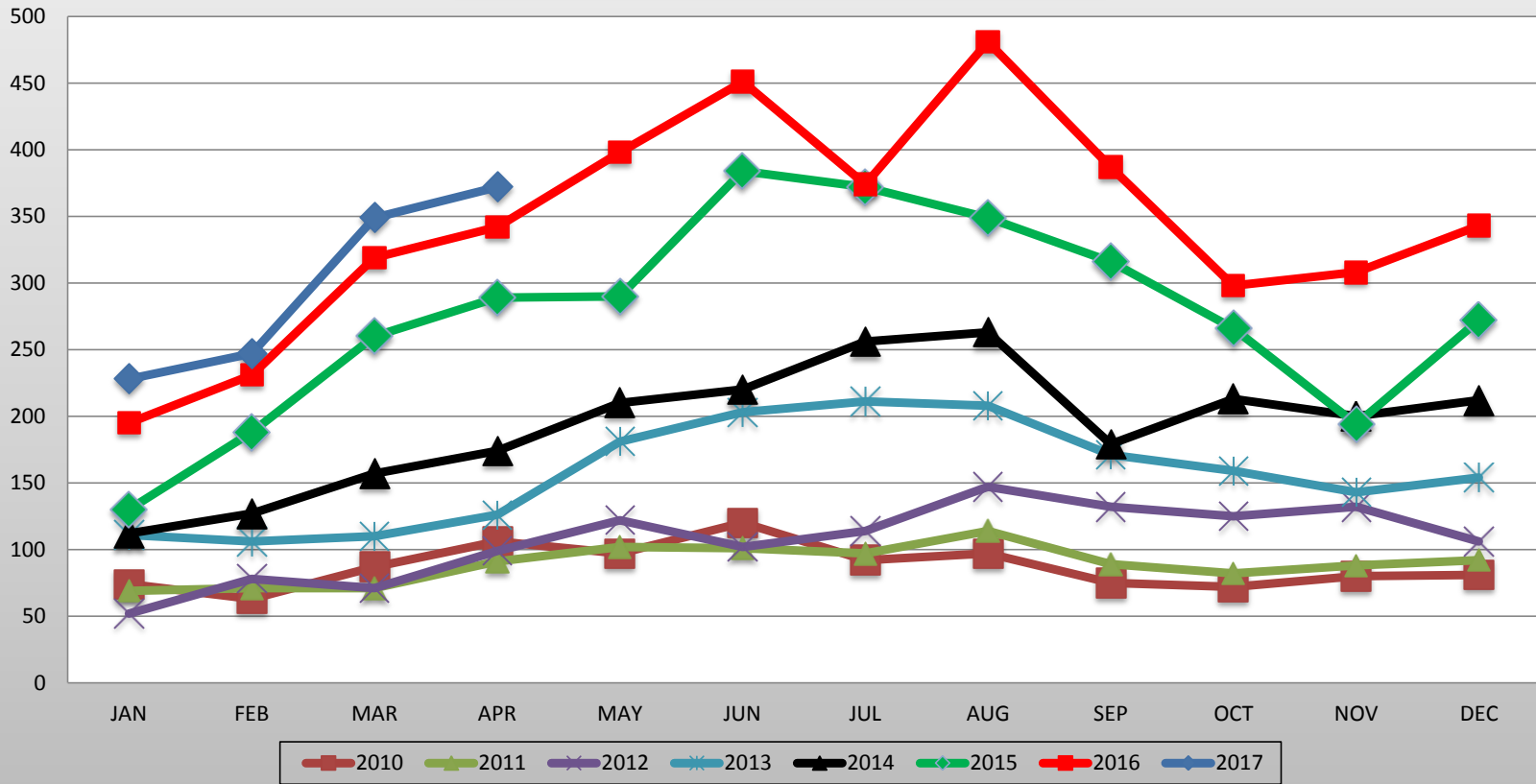


2010 2011 2012 2013 2014 2015 2016 2017

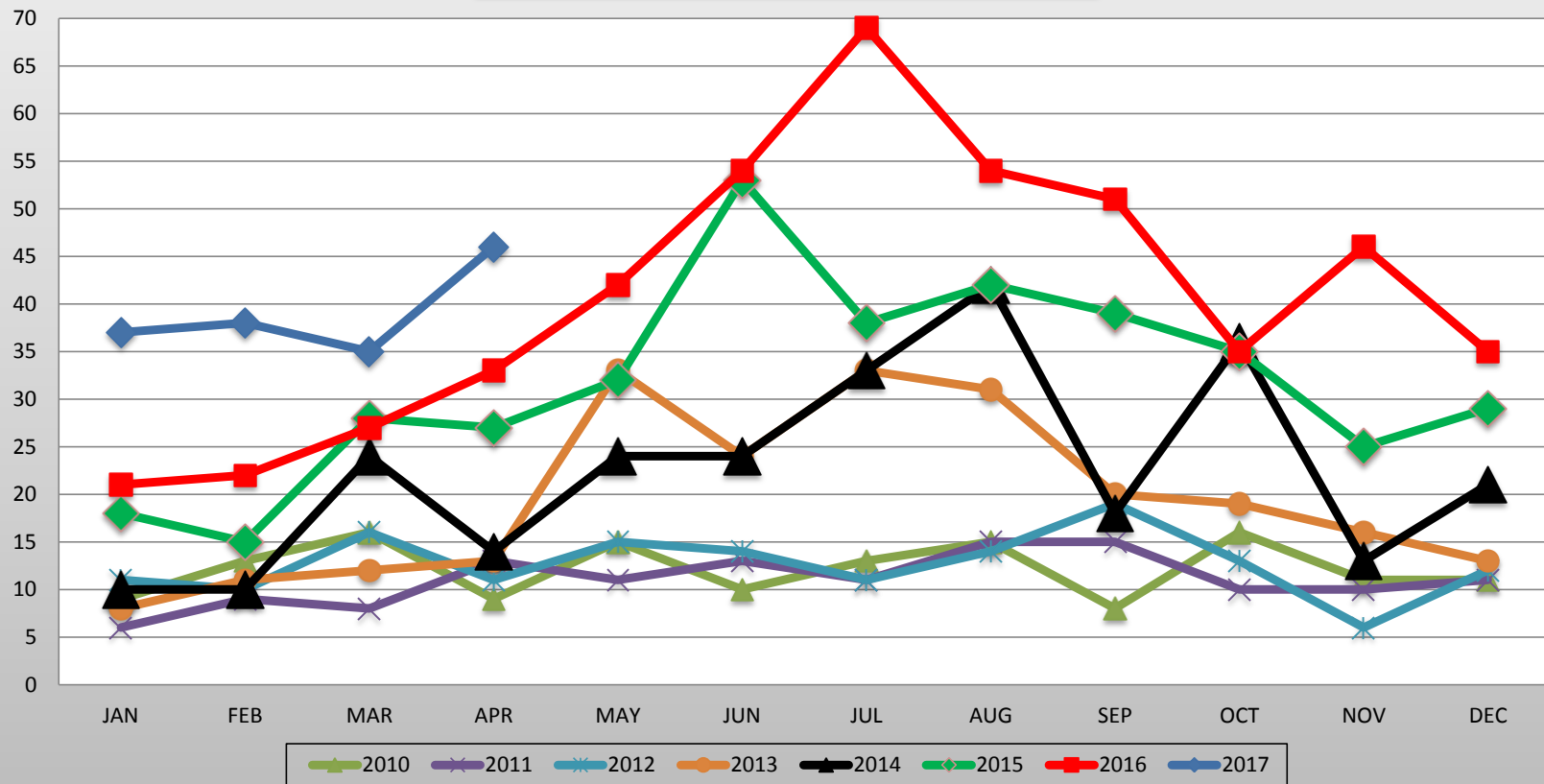
Condo's Sold 2010-2107



Solds \$250,000-\$499,999 2010-2017



Solds \$500,000 or more 2010-2017



Days on Market- Solds (Residential)

