

UTAH CENTRAL ASSOCIATION of REALTORS®
Monthly Statistics

To: Brokers and Agents
From: The Utah Central Association of REALTORS®
Subject: Monthly Statistics:March 2018

Monthly Utah and Juab County statistics provided by the Utah Central Association of REALTORS®

All Residential Types -- Utah and Juab Counties											
		Active	Units	YTD	Ratio	DOM	DOM	Average	Average	Median	Median
		Listings	Sold	Sales	Sales/List	Active	Solds	Sale \$	Active \$	Sale \$	Active \$
JAN	2014	2398	369	369	15.4%	90	62	\$238,938	\$349,307	\$207,890	\$250,000
FEB	2014	2496	441	810	17.7%	70	58	\$228,431	\$348,995	\$209,000	\$252,995
MAR	2014	2699	568	1378	21.0%	59	52	\$253,598	\$350,901	\$214,950	\$258,900
APR	2014	2764	604	1982	21.9%	58	44	\$243,877	\$360,383	\$213,875	\$263,755
MAY	2014	2930	694	2676	23.7%	63	34	\$243,937	\$362,088	\$218,600	\$262,469
JUN	2014	2951	647	3323	21.9%	68	39	\$249,149	\$368,577	\$228,000	\$266,900
JUL	2014	2947	729	4052	24.7%	69	37	\$259,834	\$364,616	\$227,400	\$269,900
AUG	2014	2885	781	4833	27.1%	75	39	\$259,595	\$370,801	\$230,000	\$276,990
SEP	2014	2687	624	5457	23.2%	81	43	\$238,825	\$373,417	\$214,950	\$279,000
OCT	2014	2457	666	6123	27.1%	89	42	\$256,330	\$374,844	\$222,750	\$279,990
NOV	2014	2236	575	6698	25.7%	107	46	\$252,697	\$381,191	\$225,000	\$284,900
DEC	2014	2084	541	7239	26.0%	104	49	\$265,775	\$381,192	\$235,000	\$284,450
								\$249,249		\$220,675	

		Active	Units	YTD	Ratio	DOM	DOM	Average	Average	Median	Median
		Listings	Sold	Sales	Sales/List	Active	Solds	Sale \$	Active \$	Sale \$	Active \$
JAN	2015	2032	391	393	19.2%	96	56	\$266,067	\$386,675	\$222,600	\$289,900
FEB	2015	2045	507	900	24.8%	62	56	\$249,885	\$399,566	\$228,500	\$299,900
MAR	2015	2150	690	1590	32.1%	40	39	\$255,862	\$414,280	\$232,084	\$304,900
APR	2015	2097	788	2378	37.6%	55	22	\$253,049	\$421,134	\$225,000	\$308,900
MAY	2015	2132	778	3156	36.5%	57	24	\$257,623	\$448,264	\$231,000	\$312,900
JUN	2015	2179	938	4094	43.0%	60	21	\$275,199	\$451,109	\$244,950	\$319,900
JUL	2015	2160	924	5018	42.8%	64	21	\$265,697	\$456,155	\$234,650	\$324,000
AUG	2015	2071	872	5890	42.1%	68	22	\$267,534	\$451,730	\$235,000	\$319,900
SEP	2015	1964	762	6652	38.8%	75	26	\$273,765	\$458,338	\$241,500	\$322,650
OCT	2015	1802	676	7328	37.5%	76	25	\$271,714	\$475,599	\$239,900	\$325,000
NOV	2015	1640	478	7806	29.1%	81	23	\$276,913	\$477,061	\$246,250	\$320,000
DEC	2015	1539	621	8427	40.4%	83	27	\$279,085	\$470,355	\$246,000	\$315,000
		Change		16.41%				\$266,033		\$234,825	

		Active	Units	YTD	Ratio	DOM	DOM	Average	Average	Median	Median
		Listings	Sold	Sales	Sales/List	Active	Solds	Sale \$	Active \$	Sale \$	Active \$
JAN	2016	1507	456	456	30.3%	30	26	\$271,388	\$271,485	\$245,325	\$245,325
FEB	2016	1586	496	952	31.3%	19	26	\$276,951	\$276,713	\$252,750	\$252,750
MAR	2016	1695	733	1685	43.2%	46	17	\$268,781	\$490,104	\$243,000	\$347,900
APR	2016	1834	735	2420	40.1%	43	14	\$274,841	\$489,931	\$250,000	\$347,900
MAY	2016	1945	830	3250	42.7%	49	11	\$283,659	\$478,089	\$255,000	\$345,000
JUN	2016	2036	932	4182	45.8%	48	11	\$288,972	\$480,032	\$258,320	\$339,900
JUL	2016	2064	842	5024	40.8%	51	16	\$296,943	\$478,392	\$255,750	\$339,000
AUG	2016	2024	934	5958	46.1%	61	16	\$295,788	\$478,025	\$269,900	\$336,400
SEP	2016	1922	855	6813	44.5%	54	18	\$291,963	\$491,825	\$255,500	\$339,900
OCT	2016	1842	673	7486	36.5%	57	20	\$278,478	\$489,503	\$250,000	\$339,900
NOV	2016	1548	687	8173	44.4%	73	20	\$291,766	\$499,118	\$255,000	\$345,450
DEC	2016	1526	694	8867	45.5%	74	28	\$287,473	\$502,718	\$259,000	\$348,950
		Change		5.22%				\$283,917		\$255,000	

		Active	Units	YTD	Ratio	DOM	DOM	Average	Average	Median	Median
		Listings	Sold	Sales	Sales/List	Active	Solds	Sale \$	Active \$	Sale \$	Active \$
JAN	2017	1406	496	496	35.3%	53	29	\$287,593	\$525,308	\$257,910	\$360,000
FEB	2017	1451	519	1015	35.8%	40	32	\$294,075	\$530,601	\$260,000	\$365,000
MAR	2017	1513	684	1699	45.2%	36	18	\$292,155	\$550,606	\$263,100	\$375,000
APR	2017	1633	731	2430	44.8%	38	11	\$303,193	\$542,513	\$270,000	\$371,990
MAY	2017	1831	847	3277	46.3%	40	10	\$303,178	\$531,598	\$271,000	\$375,000
JUN	2017	1936	960	4237	49.6%	39	12	\$304,082	\$515,312	\$272,950	\$369,000
JUL	2017	2078	805	5042	38.7%	37	13	\$305,360	\$499,772	\$277,032	\$363,674
AUG	2017	2007	1015	6057	50.6%	49	17	\$314,427	\$494,234	\$276,500	\$362,990
SEP	2017	1883	882	6939	46.8%	57	20	\$314,692	\$506,018	\$272,988	\$367,999
OCT	2017	1681	842	7781	50.1%	61	23	\$322,121	\$515,347	\$279,950	\$368,900
NOV	2017	1569	752	8533	47.9%	63	32	\$323,178	\$519,853	\$280,000	\$370,900
DEC	2017	1424	695	9228	48.8%	57	26	\$305,137	\$526,559	\$273,000	\$374,010
		Change		4.07%				\$305,766		\$272,969	

		Active Listings	Units Sold	YTD Sales	Ratio Sales/List	DOM Active	DOM Solds	Average Sale \$	Average Active \$	Median Sale \$	Median Active \$
JAN	2018	1375	561	561	40.8%	54	30	\$306,718	\$533,037	\$280,000	\$388,876
FEB	2018	1398	632	1193	45.2%	41	21	\$333,179	\$546,244	\$300,000	\$396,425
MAR	2018	1561	674	1867	43.2%	41	16	\$313,617	\$546,999	\$289,700	\$395,000
APR	2018										
MAY	2018										
JUN	2018										
JUL	2018										
AUG	2018										
SEP	2018										
OCT	2018										
NOV	2018										
DEC	2018										
		Change		9.89%				\$317,838		\$289,700	

Residential-Single Family -- Utah and Juab Counties											
		Active	Units	YTD	Ratio	DOM	DOM	Average	Average	Median	Median
		Listings	Sold	Sales	Sales/List	Active	Sold	Sale \$	Active \$	Sale \$	Active \$
JAN	2014	1907	288	288	15.1%	94	64	\$263,417	\$393,801	\$232,000	\$275,000
FEB	2014	1976	345	633	17.5%	71	58	\$247,457	\$394,243	\$228,000	\$279,900
MAR	2014	2134	443	1076	20.8%	64	53	\$279,659	\$396,492	\$232,000	\$284,900
APR	2014	2201	455	1531	20.7%	57	47	\$267,696	\$406,887	\$234,900	\$292,900
MAY	2014	2358	544	2075	23.1%	62	33	\$265,382	\$407,313	\$236,950	\$290,000
JUN	2014	2415	488	2563	20.2%	69	36	\$275,837	\$409,118	\$250,000	\$292,150
JUL	2014	2448	534	3097	21.8%	71	34	\$293,375	\$401,878	\$259,650	\$294,900
AUG	2014	2405	609	3706	25.3%	77	39	\$283,166	\$407,328	\$250,000	\$299,000
SEP	2014	2226	471	4177	21.2%	85	42	\$261,924	\$411,914	\$235,000	\$299,900
OCT	2014	2031	527	4704	25.9%	92	41	\$280,577	\$413,656	\$247,000	\$300,900
NOV	2014	1854	467	5171	25.2%	110	44	\$270,781	\$419,660	\$244,900	\$300,000
DEC	2014	1703	433	5604	25.4%	110	47	\$288,317	\$422,948	\$257,000	\$304,900

		Active	Units	YTD	Ratio	DOM	DOM	Average	Average	Median	Median
		Listings	Sold	Sales	Sales/List	Active	Sold	Sale \$	Active \$	Sale \$	Active \$
JAN	2015	1678	300	300	17.9%	101	61	\$295,477	\$426,807	\$243,950	\$309,900
FEB	2015	1704	390	690	22.9%	66	56	\$273,085	\$440,218	\$255,250	\$319,900
MAR	2015	1778	527	1217	29.6%	55	41	\$279,825	\$460,583	\$255,000	\$329,000
APR	2015	1758	586	1803	33.3%	59	22	\$279,690	\$464,446	\$253,410	\$330,000
MAY	2015	1803	576	2379	31.9%	60	24	\$287,294	\$494,021	\$267,000	\$335,900
JUN	2015	1887	725	3104	38.4%	61	21	\$302,334	\$488,742	\$270,000	\$338,000
JUL	2015	1878	681	3785	36.3%	68	23	\$299,211	\$493,494	\$268,000	\$339,350
AUG	2015	1806	628	4413	34.8%	71	24	\$301,626	\$487,333	\$274,535	\$334,900
SEP	2015	1722	595	5008	34.6%	77	28	\$300,949	\$493,505	\$269,000	\$338,950
OCT	2015	1604	510	5518	31.8%	77	30	\$303,312	\$507,279	\$271,750	\$339,900
NOV	2015	1451	380	5898	26.2%	82	26	\$301,935	\$511,319	\$275,000	\$338,900
DEC	2015	1330	474	6372	35.6%	87	29	\$309,261	\$509,706	\$275,500	\$338,650
Change				13.70%				\$294,500		\$268,500	

		Active	Units	YTD	Ratio	DOM	DOM	Average	Average	Median	Median
		Listings	Sold	Sales	Sales/List	Active	Sold	Sale \$	Active \$	Sale \$	Active \$
JAN	2016	1302	366	366	28.1%	29	33	\$293,725	\$422,242	\$263,500	\$358,900
FEB	2016	1383	406	772	29.4%	24	34	\$299,266	\$410,256	\$270,000	\$354,900
MAR	2016	1503	544	1316	36.2%	49	21	\$297,774	\$523,038	\$270,000	\$360,900
APR	2016	1608	550	1866	34.2%	48	16	\$303,817	\$527,091	\$276,525	\$362,900
MAY	2016	1703	620	2486	36.4%	53	12	\$315,155	\$514,266	\$289,450	\$359,900
JUN	2016	1778	724	3210	40.7%	53	12	\$316,594	\$517,997	\$287,250	\$359,000
JUL	2016	1821	620	3830	34.0%	55	19	\$336,169	\$512,928	\$293,500	\$354,400
AUG	2016	1778	714	4544	40.2%	65	19	\$328,796	\$514,355	\$303,875	\$354,000
SEP	2016	1711	651	5195	38.0%	57	20	\$321,889	\$524,976	\$285,000	\$356,495
OCT	2016	1604	505	5700	31.5%	60	24	\$307,832	\$529,739	\$274,000	\$359,945
NOV	2016	1308	526	6226	40.2%	82	25	\$321,021	\$548,013	\$279,900	\$373,272
DEC	2016	1289	514	6740	39.9%	84	35	\$318,382	\$552,460	\$284,674	\$375,000
Change				5.78%				\$313,368		\$282,287	

		Active	Units	YTD	Ratio	DOM	DOM	Average	Average	Median	Median
		Listings	Sold	Sales	Sales/List	Active	Solds	Sale \$	Active \$	Sale \$	Active \$
JAN	2017	1230	358	358	29.1%	55	34	\$322,358	\$566,370	\$285,000	\$381,660
FEB	2017	1307	391	749	29.9%	41	40	\$322,309	\$562,483	\$287,000	\$380,000
MAR	2017	1361	503	1252	37.0%	40	26	\$323,516	\$582,889	\$296,000	\$389,000
APR	2017	1429	524	1776	36.7%	40	13	\$341,404	\$583,316	\$305,002	\$394,170
MAY	2017	1576	610	2386	38.7%	41	13	\$340,917	\$576,230	\$310,000	\$399,250
JUN	2017	1654	677	3063	40.9%	41	15	\$340,572	\$559,279	\$307,000	\$389,900
JUL	2017	1777	590	3653	33.2%	41	16	\$341,362	\$542,391	\$310,000	\$387,345
AUG	2017	1702	723	4376	42.5%	52	20	\$354,984	\$538,245	\$314,500	\$389,000
SEP	2017	1623	624	5000	38.4%	61	25	\$355,978	\$546,788	\$317,000	\$389,900
OCT	2017	1485	615	5615	41.4%	66	27	\$359,671	\$549,973	\$311,500	\$386,990
NOV	2017	1407	552	6167	39.2%	65	34	\$361,488	\$549,049	\$308,000	\$386,950
DEC	2017	1229	500	6667	40.7%	65	32	\$341,450	\$567,995	\$311,000	\$394,900
Change				-1.08%				\$342,167		\$309,000	

		Active	Units	YTD	Ratio	DOM	DOM	Average	Average	Median	Median
		Listings	Sold	Sales	Sales/List	Active	Solds	Sale \$	Active \$	Sale \$	Active \$
JAN	2018	1208	387	387	32.0%	68	41	\$347,255	\$568,941	\$319,000	\$408,850
FEB	2018	1253	467	854	37.3%	43	34	\$376,187	\$576,737	\$340,000	\$414,990
MAR	2018	1373	486	1340	35.4%	43	23	\$348,231	\$584,501	\$328,315	\$415,550
APR	2018										
MAY	2018										
JUN	2018										
JUL	2018										
AUG	2018										
SEP	2018										
OCT	2018										
NOV	2018										
DEC	2018										
		Change		7.03%				\$357,224		\$328,315	

Condominium -- Utah and Juab Counties											
		Active	Units	YTD	Ratio	DOM	DOM	Average	Average	Median	Median
		Listings	Sold	Sales	Sales/List	Active	SOLD	Sale \$	List \$	Sale \$	List \$
JAN	2014	183	31	31	16.9%	96	46	\$140,480	\$159,263	\$122,000	\$139,900
FEB	2014	210	41	72	19.5%	54	74	\$132,613	\$155,418	\$132,000	\$139,900
MAR	2014	228	45	117	19.7%	50	52	\$139,244	\$159,003	\$133,000	\$139,900
APR	2014	236	48	165	20.3%	59	30	\$148,085	\$154,659	\$130,500	\$136,200
MAY	2014	249	53	218	21.3%	72	51	\$144,446	\$153,708	\$139,000	\$135,000
JUN	2014	221	56	274	25.3%	79	44	\$133,335	\$156,900	\$132,000	\$134,900
JUL	2014	202	69	343	34.2%	76	48	\$138,225	\$153,054	\$130,000	\$133,450
AUG	2014	174	55	398	31.6%	70	54	\$140,653	\$160,802	\$130,000	\$134,700
SEP	2014	171	59	457	34.5%	75	49	\$142,737	\$157,918	\$132,000	\$134,000
OCT	2014	147	50	507	34.0%	69	63	\$142,409	\$159,300	\$133,000	\$133,900
NOV	2014	134	33	540	24.6%	77	54	\$151,170	\$168,307	\$135,000	\$133,000
DEC	2014	130	39	579	30.0%	81	47	\$140,485	\$170,193	\$127,000	\$136,900

		Active	Units	YTD	Ratio	DOM	DOM	Average	Average	Median	Median	
		Listings	Sold	Sales	Sales/List	Active	SOLD	Sale \$	List \$	Sale \$	List \$	
JAN	2015	141	33	33	23.4%	56	56	\$138,450	\$165,477	\$133,000	\$140,000	
FEB	2015	141	34	67	24.1%	43	50	\$135,796	\$172,516	\$129,250	\$146,900	
MAR	2015	173	57	124	32.9%	28	39	\$153,638	\$170,528	\$133,900	\$144,900	
APR	2015	153	64	188	41.8%	36	28	\$148,350	\$173,958	\$139,900	\$144,900	
MAY	2015	142	80	268	56.3%	44	23	\$146,612	\$161,466	\$143,500	\$139,949	
JUN	2015	120	83	351	69.2%	53	22	\$156,758	\$171,193	\$145,000	\$150,000	
JUL	2015	124	107	458	86.3%	45	16	\$149,235	\$173,786	\$139,000	\$140,000	
AUG	2015	114	99	557	86.8%	50	17	\$158,524	\$174,693	\$141,700	\$139,949	
SEP	2015	91	69	626	75.8%	63	28	\$152,278	\$175,704	\$143,000	\$146,000	
OCT	2015	75	68	694	90.7%	59	23	\$144,284	\$189,869	\$138,243	\$155,200	
NOV	2015	74	34	728	45.9%	66	43	\$165,374	\$192,399	\$144,769	\$153,600	
DEC	2015	82	65	793	79.3%	49	22	\$154,189	\$197,369	\$139,000	\$155,450	
				36.96%					\$150,291	\$139,450		

		Active	Units	YTD	Ratio	DOM	DOM	Average	Average	Median	Median
		Listings	Sold	Sales	Sales/List	Active	SOLD	Sale \$	List \$	Sale \$	List \$
JAN	2016	80	37	37	46.3%	24	22	\$142,359	\$184,410	\$138,900	\$149,900
FEB	2016	78	36	73	46.2%	22	12	\$138,378	\$171,554	\$143,000	\$147,900
MAR	2016	68	72	145	105.9%	29	8	\$152,366	\$210,694	\$151,250	\$155,950
APR	2016	89	80	225	89.9%	21	12	\$157,004	\$196,893	\$141,500	\$162,000
MAY	2016	91	83	308	91.2%	25	10	\$166,307	\$194,751	\$155,000	\$165,000
JUN	2016	99	82	390	82.8%	29	6	\$162,045	\$187,998	\$155,000	\$172,900
JUL	2016	86	84	474	97.7%	38	9	\$160,025	\$188,077	\$154,000	\$179,900
AUG	2016	102	84	558	82.4%	33	15	\$157,466	\$180,883	\$152,000	\$179,900
SEP	2016	77	68	626	88.3%	41	7	\$157,589	\$180,753	\$155,000	\$179,900
OCT	2016	88	65	691	73.9%	42	10	\$160,209	\$183,439	\$153,000	\$182,900
NOV	2016	76	54	745	71.1%	35	12	\$171,257	\$200,754	\$148,500	\$185,900
DEC	2016	75	74	819	98.7%	41	18	\$170,157	\$188,797	\$178,000	\$185,900
				3.28%				\$157,930			\$152,500

		Active	Units	YTD	Ratio	DOM	DOM	Average	Average	Median	Median	
		Listings	Sold	Sales	Sales/List	Active	Solds	Sale \$	Active \$	Sale \$	Active \$	
JAN	2017	48	52	52	108.3%	35	8	\$170,925	\$194,413	\$167,000	\$197,400	
FEB	2017	35	46	98	131.4%	12	11	\$176,148	\$208,459	\$161,000	\$189,900	
MAR	2017	29	66	164	227.6%	15	5	\$176,315	\$208,189	\$172,000	\$180,000	
APR	2017	60	91	255	151.7%	15	4	\$177,894	\$216,480	\$180,000	\$202,900	
MAY	2017	71	94	349	132.4%	14	5	\$181,179	\$203,644	\$179,608	\$179,900	
JUN	2017	83	113	462	136.1%	23	7	\$187,531	\$199,344	\$182,900	\$179,900	
JUL	2017	112	92	554	82.1%	23	9	\$174,223	\$193,098	\$169,000	\$186,250	
AUG	2017	98	114	668	116.3%	37	11	\$186,840	\$182,528	\$176,000	\$179,900	
SEP	2017	71	88	756	123.9%	50	15	\$174,241	\$181,208	\$171,450	\$175,000	
OCT	2017	51	95	851	186.3%	27	20	\$193,937	\$187,388	\$182,900	\$189,900	
NOV	2017	30	88	939	293.3%	38	16	\$182,868	\$179,989	\$180,000	\$171,700	
DEC	2017	22	100	1039	454.5%	46	13	\$184,401	\$188,309	\$186,000	\$191,700	
		Change			26.86%				\$180,542			\$177,804

		Active	Units	YTD	Ratio	DOM	DOM	Average	Average	Median	Median
		Listings	Sold	Sales	Sales/List	Active	Solds	Sale \$	Active \$	Sale \$	Active \$
JAN	2018	22	67	67	304.5%	12	13	\$185,459	\$213,536	\$185,000	\$210,859
FEB	2018	27	72	139	266.7%	18	12	\$195,420	\$233,214	\$194,750	\$217,660
MAR	2018	57	72	211	126.3%	7	5	\$193,192	\$231,779	\$190,500	\$224,900
APR	2018										
MAY	2018										
JUN	2018										
JUL	2018										
AUG	2018										
SEP	2018										
OCT	2018										
NOV	2018										
DEC	2018										
		Change		28.66%				\$191,357		\$190,500	

Homes From \$250,000-\$499,999– Utah and Juab Counties							
		Active	Units	YTD	Ratio	DOM	DOM
		Listings	Sold	Sales	Sales/List	Active	Solds
JAN	2014	972	112	112	11.5%	96	70
FEB	2014	1014	127	239	12.5%	73	72
MAR	2014	1121	157	396	14.0%	64	63
APR	2014	1153	174	570	15.1%	57	50
MAY	2014	1227	210	780	17.1%	62	41
JUN	2014	1265	220	1000	17.4%	70	39
JUL	2014	1302	256	1256	19.7%	70	37
AUG	2014	1348	263	1519	19.5%	77	49
SEP	2014	1251	179	1698	14.3%	84	42
OCT	2014	1177	213	1911	18.1%	92	47
NOV	2014	1101	200	2111	18.2%	111	41
DEC	2014	1010	212	2323	21.0%	119	55

		Active	Units	YTD	Ratio	DOM	DOM
		Listings	Sold	Sales	Sales/List	Active	Solds
JAN	2015	1018	130	130	12.8%	116	58
FEB	2015	1080	188	318	17.4%	70	62
MAR	2015	1110	260	578	23.4%	54	47
APR	2015	1068	289	867	27.1%	61	35
MAY	2015	1121	290	1157	25.9%	62	27
JUN	2015	1160	384	1541	33.1%	63	29
JUL	2015	1179	372	1913	31.6%	68	35
AUG	2015	1140	349	2262	30.6%	70	30
SEP	2015	1085	316	2578	29.1%	77	31
OCT	2015	1001	266	2844	26.6%	75	39
NOV	2015	889	194	3038	21.8%	70	36
DEC	2015	886	272	3310	30.7%	84	35
		Change		42.49%			

		Active	Units	YTD	Ratio	DOM	DOM
		Listings	Sold	Sales	Sales/List	Active	Solds
JAN	2016	920	195	195	21.2%	30	34
FEB	2016	938	231	426	24.6%	24	42
MAR	2016	1011	319	745	31.6%	47	29
APR	2016	1065	342	1087	32.1%	48	19
MAY	2016	1131	398	1485	35.2%	51	14
JUN	2016	1162	451	1936	38.8%	50	17
JUL	2016	1197	374	2310	31.2%	52	20
AUG	2016	1152	481	2791	41.8%	61	22
SEP	2016	1107	387	3178	35.0%	53	24
OCT	2016	1079	298	3476	27.6%	52	27
NOV	2016	932	308	3784	33.0%	70	28
DEC	2016	911	343	4127	37.7%	72	39
		Change		24.68%			

		Active	Units	YTD	Ratio	DOM	DOM
		Listings	Sold	Sales	Sales/List	Active	Solds
JAN	2017	876	230	230	26.3%	41	34
FEB	2017	908	247	477	27.2%	34	47
MAR	2017	938	352	829	37.5%	34	33
APR	2017	1011	384	1213	38.0%	35	15
MAY	2017	1115	452	1665	40.5%	38	14
JUN	2017	1203	539	2204	44.8%	35	15
JUL	2017	1302	456	2660	35.0%	35	17
AUG	2017	1292	583	3243	45.1%	47	19
SEP	2017	1208	482	3725	39.9%	55	26
OCT	2017	1082	504	4229	46.6%	54	24
NOV	2017	1075	450	4679	41.9%	56	36
DEC	2017	976	390	5069	40.0%	52	35
		Change		22.83%			

		Active	Units	YTD	Ratio	DOM	DOM
		Listings	Sold	Sales	Sales/List	Active	Solds
JAN	2018	955	306	306	32.0%	48	42
FEB	2018	958	379	685	39.6%	32	29
MAR	2018	1038	413	1098	39.8%	40	23
APR	2018						
MAY	2018						
JUN	2018						
JUL	2018						
AUG	2018						
SEP	2018						
OCT	2018						
NOV	2018						
DEC	2018						
		Change		32.45%			

Homes Over \$500,000– Utah and Juab Counties							
		Active	Homes	YTD	Sales %	Active	Sold
		Listings	Sold	Sales	of Listings	DOM	DOM
JAN	2014	230	10	10	4.3%	158	66
FEB	2014	243	10	20	4.1%	125	74
MAR	2014	278	24	44	8.6%	105	167
APR	2014	312	14	58	4.5%	91	102
MAY	2014	333	24	82	7.2%	84	37
JUN	2014	346	24	106	6.9%	94	55
JUL	2014	332	33	139	9.9%	105	63
AUG	2014	337	42	181	12.5%	113	54
SEP	2014	321	18	199	5.6%	126	75
OCT	2014	291	36	235	12.4%	148	46
NOV	2014	263	13	248	4.9%	164	113
DEC	2014	240	21	269	8.8%	144	77

		Active	Homes	YTD	Sales %	Active	Sold
		Listings	Sold	Sales	of Listings	DOM	DOM
JAN	2015	239	18	18	7.5%	153	104
FEB	2015	265	15	33	5.7%	140	120
MAR	2015	312	28	61	9.0%	93	185
APR	2015	326	27	88	8.3%	80	35
MAY	2015	351	32	120	9.1%	84	39
JUN	2015	376	53	173	14.1%	84	40
JUL	2015	382	38	211	9.9%	100	86
AUG	2015	340	42	253	12.4%	111	39
SEP	2015	325	39	292	12.0%	127	76
OCT	2015	310	35	327	11.3%	140	106
NOV	2015	257	25	352	9.7%	159	70
DEC	2015	235	29	381	12.3%	153	111
		Change		41.64%			

		Active	Homes	YTD	Sales %	Active	Sold
		Listings	Sold	Sales	of Listings	DOM	DOM
JAN	2016	207	21	21	10.1%	35	70
FEB	2016	205	22	43	10.7%	30	48
MAR	2016	324	27	70	8.3%	74	98
APR	2016	371	33	103	8.9%	61	46
MAY	2016	393	42	145	10.7%	73	29
JUN	2016	392	54	199	13.8%	85	64
JUL	2016	397	69	268	17.4%	96	45
AUG	2016	400	54	322	13.5%	93	77
SEP	2016	397	51	373	12.8%	97	79
OCT	2016	354	35	408	9.9%	113	40
NOV	2016	285	46	454	16.1%	131	86
DEC	2016	288	35	489	12.2%	134	90
Change				28.35%			

		Active	Units	YTD	Ratio	DOM	DOM
		Listings	Sold	Sales	Sales/List	Active	Solds
JAN	2017	292	37	37	12.7%	146	55
FEB	2017	311	38	75	12.2%	119	92
MAR	2017	375	36	111	9.6%	60	34
APR	2017	405	48	159	11.9%	56	97
MAY	2017	460	62	221	13.5%	65	41
JUN	2017	463	68	289	14.7%	82	28
JUL	2017	459	59	348	12.9%	81	24
AUG	2017	424	83	431	19.6%	92	48
SEP	2017	420	69	500	16.4%	55	55
OCT	2017	386	66	566	17.1%	110	60
NOV	2017	358	46	612	12.8%	112	75
DEC	2017	324	49	661	15.1%	111	40
Change				35.17%			

		Active	Units	YTD	Ratio	DOM	DOM
		Listings	Sold	Sales	Sales/List	Active	Solds
JAN	2018	325	39	39	12.0%	108	82
FEB	2018	349	63	102	18.1%	76	49
MAR	2018	401	46	148	11.5%	56	77
APR	2018						
MAY	2018						
JUN	2018						
JUL	2018						
AUG	2018						
SEP	2018						
OCT	2018						
NOV	2018						
DEC	2018						
		Change		33.33%			

Homes Over \$1,000,000– Utah and Juab Counties							
		Active	Homes	YTD	Sales %	Active	Sold
		Listings	Sold	Sales	of Listings	DOM	DOM
JAN	2014	62	2	2	3.2%	197	758
FEB	2014	58	0	2	0.0%	204	0
MAR	2014	66	4	6	6.1%	181	440
APR	2014	75	1	7	1.3%	141	699
MAY	2014	86	2	9	2.3%	133	131
JUN	2014	89	0	9	0.0%	119	0
JUL	2014	84	3	12	3.6%	145	28
AUG	2014	81	2	14	2.5%	170	23
SEP	2014	84	2	16	2.4%	170	37
OCT	2014	76	2	18	2.6%	181	45
NOV	2014	72	2	20	2.8%	207	223
DEC	2014	64	3	23	4.7%	224	46

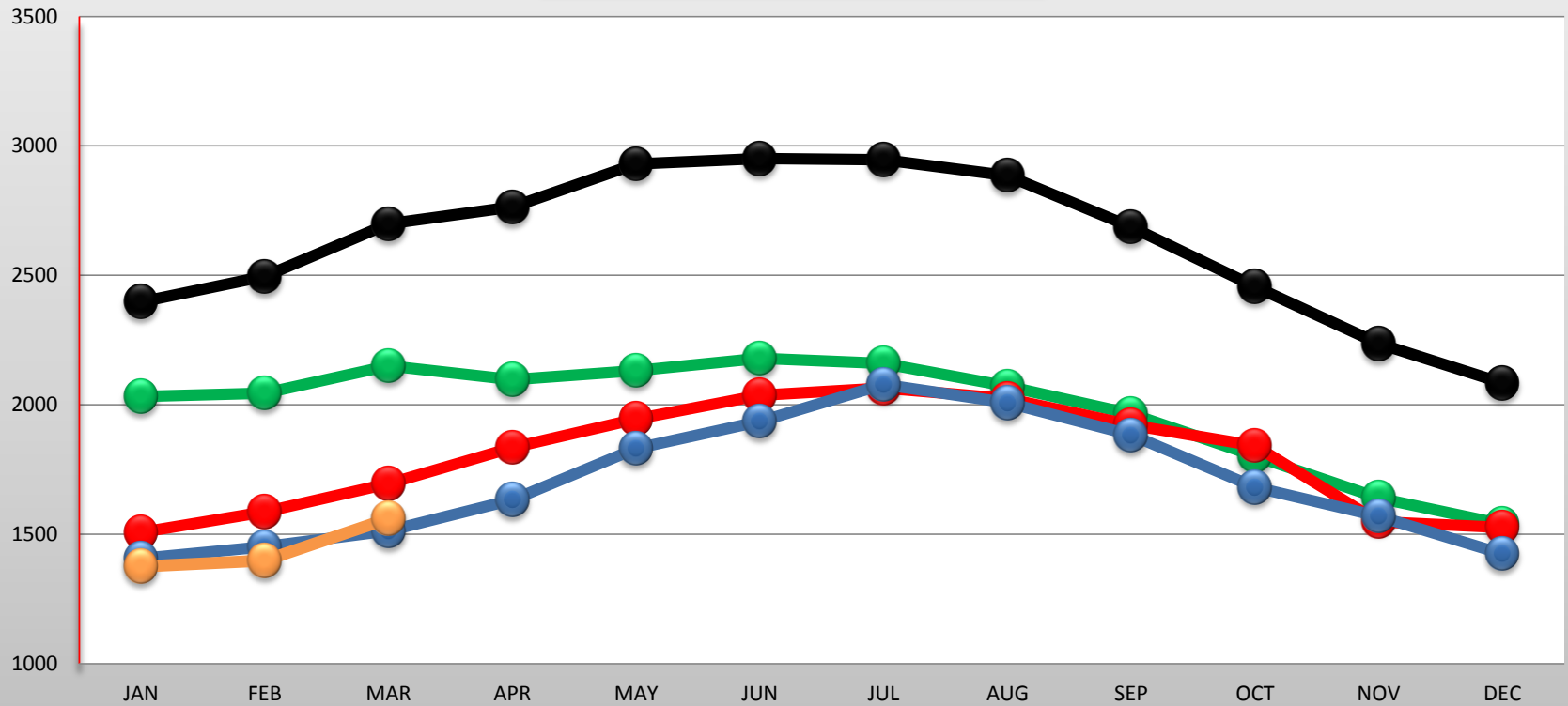
		Active	Homes	YTD	Sales %	Active	Sold
		Listings	Sold	Sales	of Listings	DOM	DOM
JAN	2015	70	4	4	5.7%	222	32
FEB	2015	75	0	4	0.0%	204	0
MAR	2015	84	2	6	2.4%	192	45
APR	2015	90	1	7	1.1%	134	4
MAY	2015	108	2	9	1.9%	133	14
JUN	2015	107	3	12	2.8%	118	73
JUL	2015	108	9	21	8.3%	145	190
AUG	2015	99	2	23	2.0%	175	112
SEP	2015	96	4	27	4.2%	197	287
OCT	2015	85	2	29	2.4%	215	89
NOV	2015	77	1	30	1.3%	243	522
DEC	2015	74	4	34	5.4%	251	114
		Change		47.83%			

		Active	Homes	YTD	Sales %	Active	Sold
		Listings	Sold	Sales	of Listings	DOM	DOM
JAN	2016	72	1	1	1.4%	348	42
FEB	2016	74	2	3	2.7%	338	41
MAR	2016	82	1	4	1.2%	310	143
APR	2016	95	0	4	0.0%	195	0
MAY	2016	87	1	5	1.1%	145	78
JUN	2016	90	1	6	1.1%	128	249
JUL	2016	88	6	12	6.8%	137	50
AUG	2016	85	5	17	5.9%	153	432
SEP	2016	85	3	20	3.5%	165	14
OCT	2016	81	0	20	0.0%	178	0
NOV	2016	71	3	23	4.2%	153	380
DEC	2016	71	1	24	1.4%	159	119
		Change		-29.41%			

		Active	Units	YTD	Ratio	DOM	DOM
		Listings	Sold	Sales	Sales/List	Active	Solds
JAN	2017	71	2	2	2.8%	173	184
FEB	2017	78	4	6	5.1%	176	137
MAR	2017	89	3	9	3.4%	161	33
APR	2017	94	4	13	4.3%	121	19
MAY	2017	102	4	17	3.9%	102	17
JUN	2017	97	3	20	3.1%	131	301
JUL	2017	97	3	23	3.1%	113	29
AUG	2017	95	8	31	8.4%	144	79
SEP	2017	96	5	36	5.2%	126	166
OCT	2017	85	9	45	10.6%	174	61
NOV	2017	78	4	49	5.1%	191	323
DEC	2017	74	2	51	2.7%	183	109
		Change		112.50%			

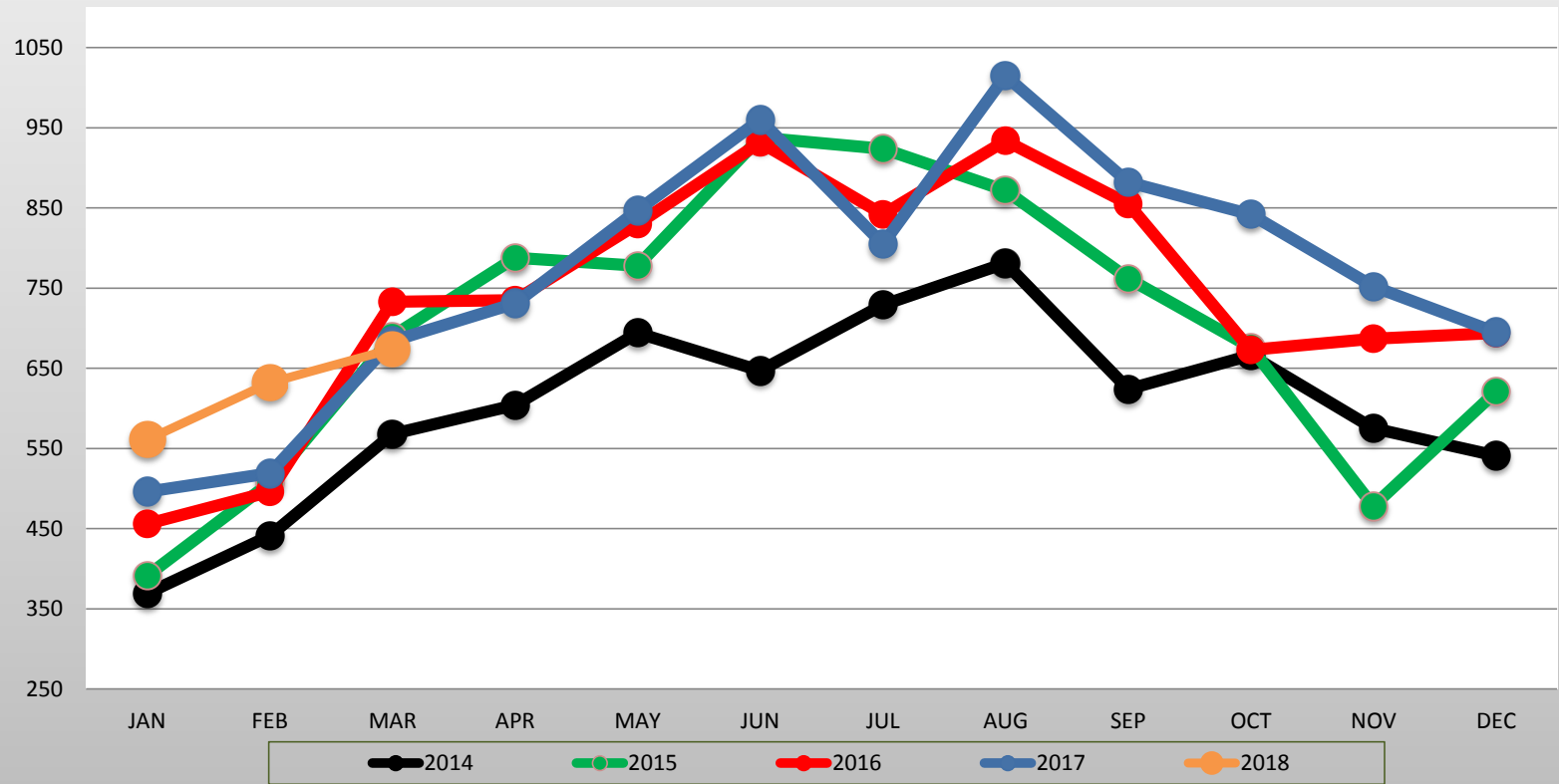
		Active	Units	YTD	Ratio	DOM	DOM
		Listings	Sold	Sales	Sales/List	Active	Solds
JAN	2018	69	3	3	4.3%	211	246
FEB	2018	74	2	5	2.7%	195	56
MAR	2018	85	1	6	1.2%	180	374
APR	2018						
MAY	2018						
JUN	2018						
JUL	2018						
AUG	2018						
SEP	2018						
OCT	2018						
NOV	2018						
DEC	2018						
		Change		-33.33%			

All Active Listings 2014-2018

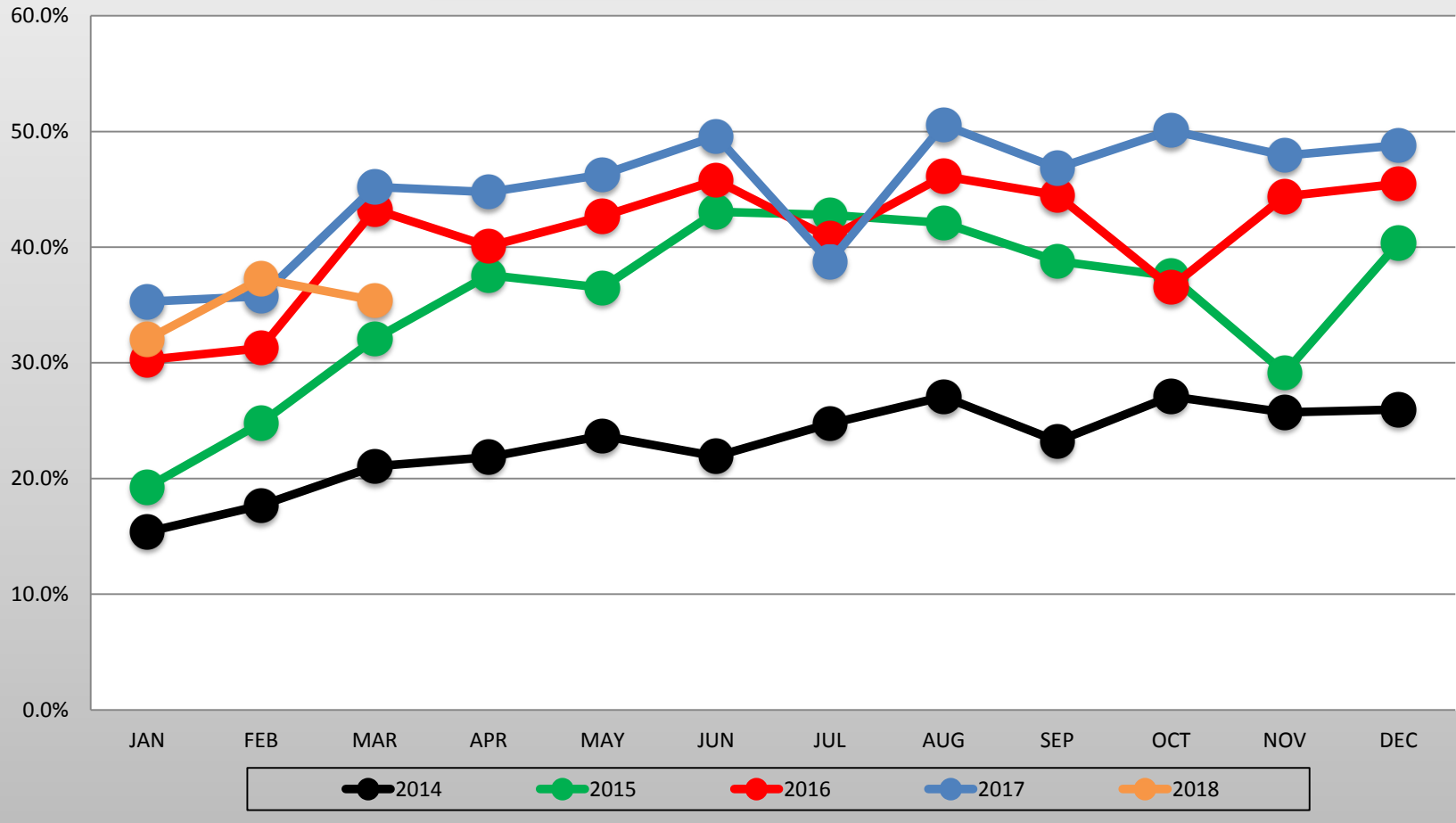


● 2014 ● 2015 ● 2016 ● 2017 ● 2018

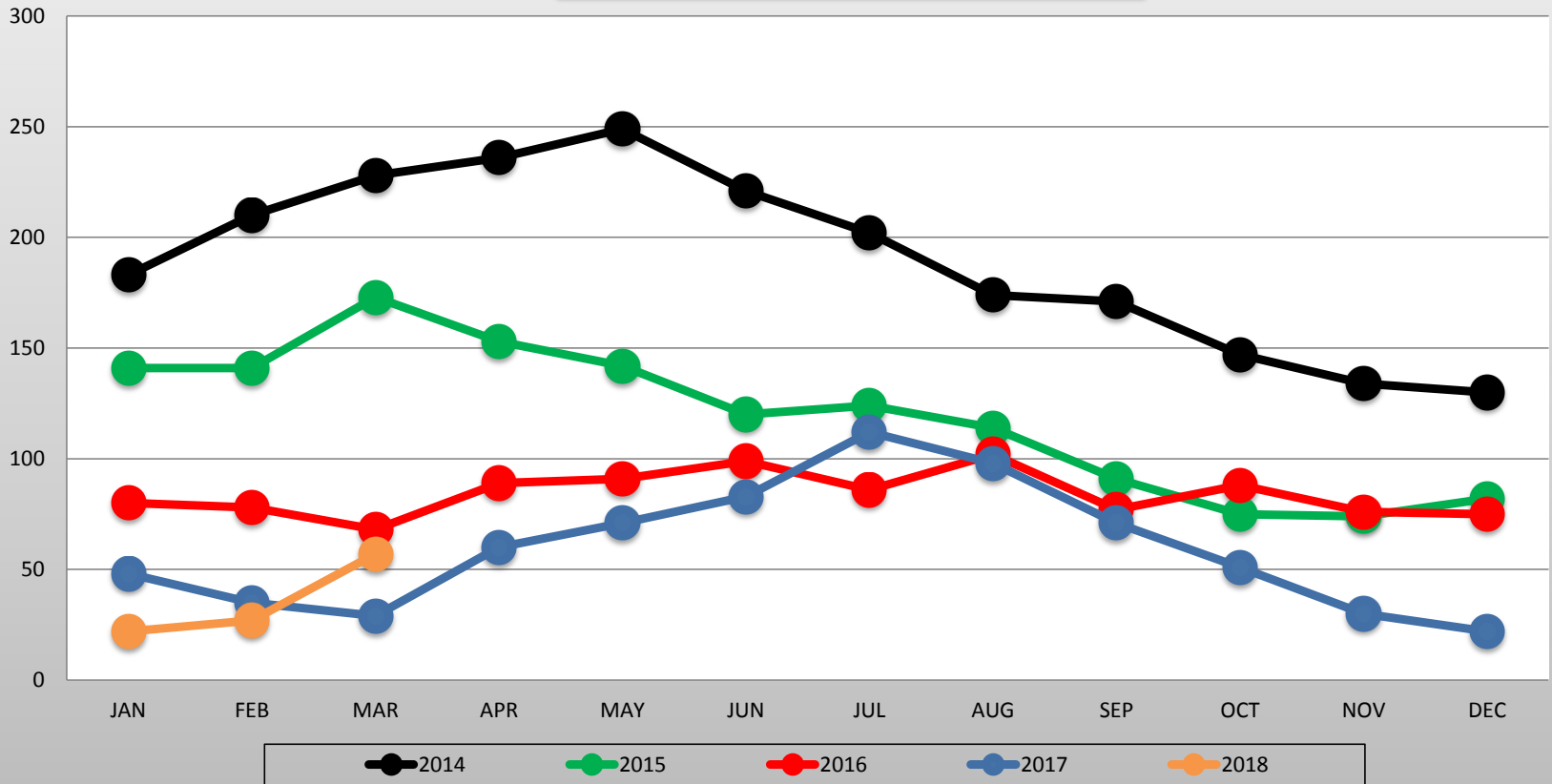
All Units Sold 2014- 2018



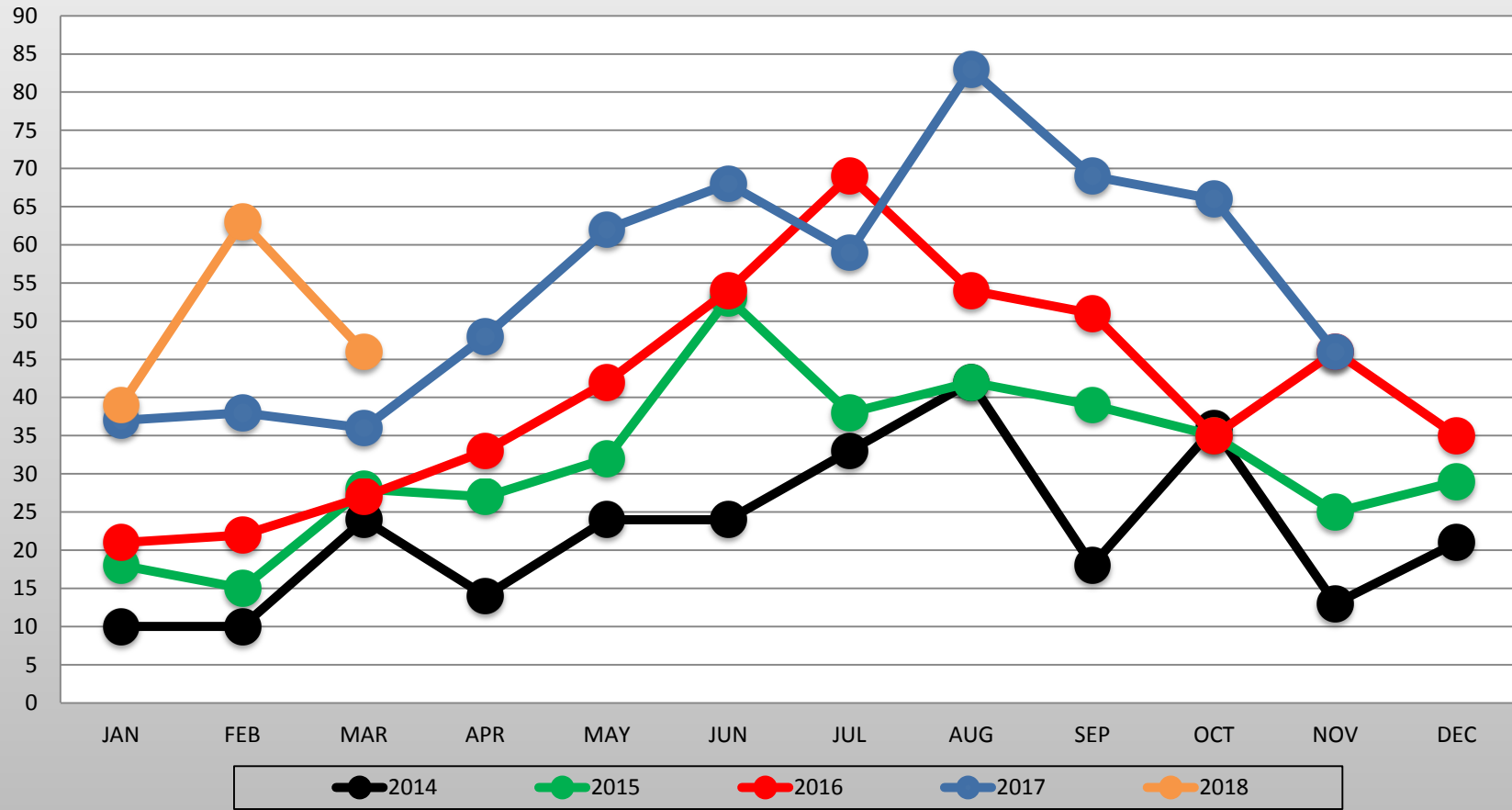
Percentage Ratio of Sold vs. Active



Active Condo Listings 2014-2018



Solds \$500,000 or more 2014-2018



Days on Market- Solds (Residential)2014-2018

