

How to *Obtain a Key* with the *eKEY App*

Keybox → Device ↓	iBox BT LE 	iBox BT 	iBox 
Android™	<u>No additional hardware required</u>	<u>No additional hardware required</u>	<u>Supra Fob required</u> 
Apple® (4s and Newer)	<u>No additional hardware required</u>	<u>Supra Fob required</u> 	<u>Supra Fob required</u> 
Apple (4 and 3GS)	<u>Supra Fob required</u> 	<u>Supra Fob required</u> 	<u>Supra Fob required</u> 
BlackBerry®	<u>No additional hardware required</u>	<u>No additional hardware required</u>	<u>Supra Fob required</u> 

Click on the link that corresponds to the phone and keybox.



How to *Obtain a Key* using Bluetooth®

1. Select **Obtain Key**.

Android™

Apple® (4s and newer)

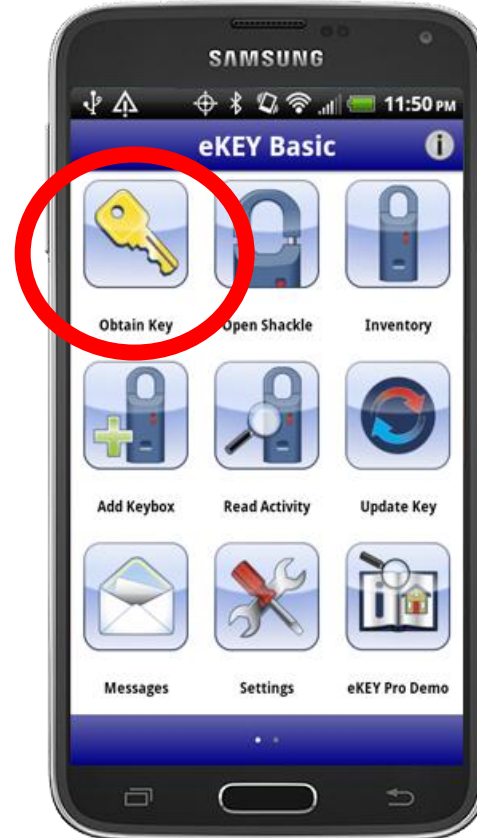
BlackBerry®

1. Select **Obtain Key**.
2. Type in the PIN code.
3. Press up on the bottom of the keybox to turn on Bluetooth®.
4. After the success screen displays, press up on the bottom of the key container to release.

Pair the Fob

1. Read and follow the manufacturer's instructions on *How to pair devices* for your specific phone or tablet.
2. Select the fob name to pair (example: SUPRA-KBS8).

Tip: On some phones, the first time a keybox is accessed the pairing alert pops up to accept the pairing. Enter 0000 or 1234 for the passcode.



How to *Obtain a Key* using Bluetooth®

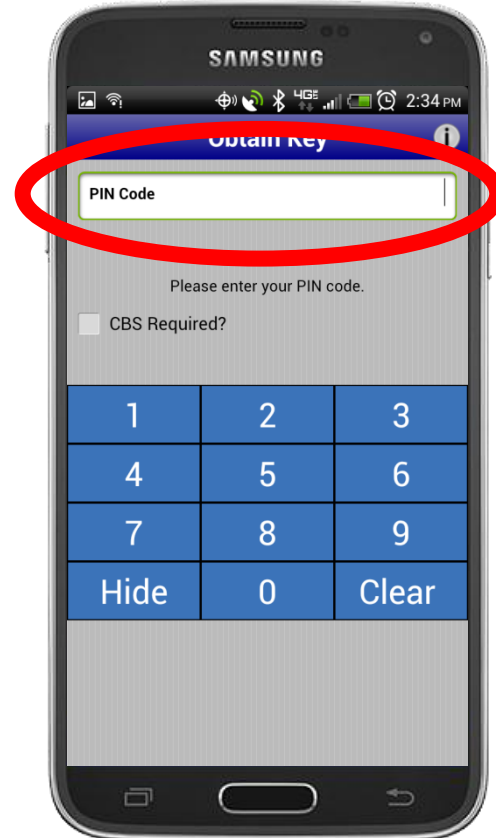
Android™

Apple® (4s and newer)

BlackBerry®

1. Select **Obtain Key**.
2. Type in the PIN code.
3. Press up on the bottom of the keybox to turn on Bluetooth®.
4. After the success screen displays, press up on the bottom of the key container to release.

2. Type in the PIN code.



How to *Obtain a Key* using Bluetooth®

Android™

Apple® (4s and newer)

BlackBerry®

1. Select **Obtain Key**.
2. Type in the PIN code.
3. Press up on the bottom of the keybox to turn on Bluetooth®.
4. After the success screen displays, press up on the bottom of the key container to release.

3. Press up on the bottom of the keybox.



How to *Obtain a Key* using Bluetooth®

Android™

Apple® (4s and newer)

BlackBerry®

1. Select **Obtain Key**.
2. Type in the PIN code.
3. Press up on the bottom of the keybox to turn on Bluetooth®.
4. After the success screen displays, press up on the bottom of the key container to release it.

4. Press up on the key container.



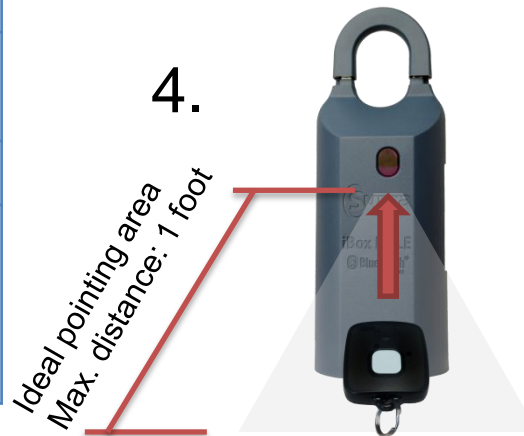
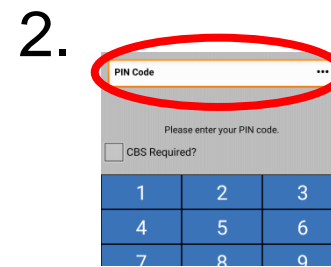
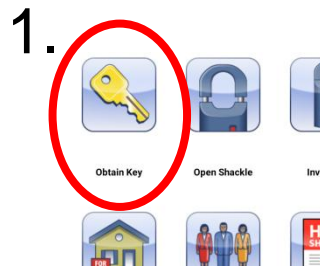
How to *Obtain a Key* using a Supra Fob

Pair the Fob

1. Read and follow the manufacturer's instructions on *How to pair devices* for your specific phone or tablet.
2. Select the fob name to pair (example: SUPRA-KBS8).

Tip: On some phones, the first time a keybox is accessed the pairing alert pops up to accept the pairing. Enter 0000 or 1234 for the passcode.

1. Select **Obtain Key**.
2. Type in the PIN code.
3. Press the button to turn on the Supra Fob.
4. Point the fob at the keybox.
5. After the success screen displays, press up on the bottom of the key container to release.



For the latest information, visit us at www.supraekey.com and select the **Customer Support** tab.

For more information on compatible phones and tablets, select the **Compatible eKEY Devices List** button on the www.supraekey.com home page.

