

**UTAH CENTRAL ASSOCIATION of REALTORS®**

**Monthly Statistics**

To: Brokers and Agents  
From: The Utah Central Association of REALTORS®  
Subject: Monthly Statistics: January 2021

Monthly Utah and Juab County statistics provided by the Utah Central Association of REALTORS®
---

**All Residential Types -- Utah and Juab Counties**

2016	Jan	Feb	March	April	May	June	July	August	Sept	Oct	Nov	Dec	Change
Active	1,507	1,586	1,695	1,834	1,945	2,036	2,064	2,024	1,922	1,842	1,548	1,526	
Solds	456	496	733	735	830	932	842	934	855	673	687	694	
YTD Solds	456	952	1685	2420	3250	4182	5024	5958	6813	7486	8173	8867	
Ratio Sales/List	30.3%	31.3%	43.2%	40.1%	42.7%	45.8%	40.8%	46.1%	44.5%	36.5%	44.4%	45.5%	
DOM Active	30	19	46	43	49	48	51	61	54	57	73	74	
DOM Solds	26	26	17	14	11	11	16	16	18	20	20	28	
Average Sale Price	\$271,388	\$276,951	\$268,781	\$274,841	\$283,659	\$288,972	\$296,943	\$295,788	\$291,963	\$278,478	\$291,766	\$287,473	\$283,917
Average Active Price	\$271,485	\$276,713	\$490,104	\$489,931	\$478,089	\$480,032	\$478,392	\$478,025	\$491,825	\$489,503	\$499,118	\$502,718	
Median Sales Price	\$245,325	\$252,750	\$243,000	\$250,000	\$255,000	\$258,320	\$255,750	\$269,900	\$255,500	\$250,000	\$255,000	\$259,000	\$255,000
Median Active Price	\$245,325	\$252,750	\$347,900	\$347,900	\$345,000	\$339,900	\$339,000	\$336,400	\$339,900	\$339,900	\$345,450	\$348,950	

2017	Jan	Feb	March	April	May	June	July	August	Sept	Oct	Nov	Dec	Change
Active	1,406	1,451	1,513	1,633	1,831	1,936	2,078	2,007	1,883	1,681	1,569	1,424	
Solds	496	519	684	731	847	960	805	1,015	882	842	752	695	
YTD Solds	496	1015	1699	2430	3277	4237	5042	6057	6939	7781	8533	9228	4.07%
Ratio Sales/List	35.3%	35.8%	45.2%	44.8%	46.3%	49.6%	38.7%	50.6%	46.8%	50.1%	47.9%	48.8%	
DOM Active	53	40	36	38	40	39	37	49	57	61	63	57	
DOM Solds	29	32	18	11	10	12	13	17	20	23	32	26	
Average Sale Price	\$287,593	\$294,075	\$292,155	\$303,193	\$303,178	\$304,082	\$305,360	\$314,427	\$314,692	\$322,121	\$323,178	\$305,137	\$305,766
Average Active Price	\$525,308	\$530,601	\$550,606	\$542,513	\$531,598	\$515,312	\$499,772	\$494,234	\$506,018	\$515,347	\$519,853	\$526,559	
Median Sales Price	\$257,910	\$260,000	\$263,100	\$270,000	\$271,000	\$272,950	\$277,032	\$276,500	\$272,988	\$279,950	\$280,000	\$273,000	\$272,969
Median Active Price	\$360,000	\$365,000	\$375,000	\$371,990	\$375,000	\$369,000	\$363,674	\$362,990	\$367,999	\$368,900	\$370,900	\$374,010	

2018	Jan	Feb	March	April	May	June	July	August	Sept	Oct	Nov	Dec	Change
Active	1,375	1,398	1,561	1,747	1,913	1,914	2,041	2,178	2,319	2,356	2,168	2,115	
Solds	565	642	705	769	872	966	950	958	766	777	722	706	
YTD Solds	565	1207	1912	2681	3553	4519	5469	6427	7193	7970	8692	9398	1.84%
Ratio Sales/List	41.1%	45.9%	45.2%	44.0%	45.6%	50.5%	46.5%	44.0%	33.0%	33.0%	33.3%	33.4%	
DOM Active	54	41	41	38	40	41	45	52	51	60	70	74	
DOM Solds	30	22	17	11	10	12	15	18	21	26	28	35	
Average Sale Price	\$307,174	\$334,770	\$315,232	\$331,985	\$344,728	\$347,505	\$342,973	\$355,104	\$343,809	\$341,557	\$343,080	\$350,453	\$338,198
Average Active Price	\$533,037	\$546,244	\$546,999	\$539,028	\$530,506	\$531,125	\$526,348	\$515,597	\$503,902	\$498,329	\$497,916	\$477,197	
Median Sales Price	\$280,000	\$300,000	\$290,000	\$300,000	\$310,000	\$317,000	\$317,872	\$314,487	\$312,900	\$309,000	\$316,661	\$5,757	\$309,500
Median Active Price	\$388,876	\$396,425	\$395,000	\$399,500	\$399,000	\$398,795	\$395,000	\$389,596	\$388,089	\$380,200	\$379,395	\$380,400	

## All Residential Types -- Utah and Juab Counties

2019	Jan	Feb	March	April	May	June	July	August	Sept	Oct	Nov	Dec	Change
Active	2,100	2,075	2,183	2,221	2,371	2,338	2,348	2,269	2,325	1,990	1,764	1,560	
Solds	545	590	801	922	1,097	988	1,145	1,122	904	937	776	827	
YTD Solds	545	1135	1936	2858	3955	4943	6088	7210	8114	9051	9827	10654	13.36%
Ratio Sales/List	26.0%	28.4%	36.7%	41.5%	46.3%	42.3%	48.8%	49.4%	38.9%	47.1%	44.0%	53.0%	
DOM Active	68	64	51	48	52	52	54	55	57	55	67	64	
DOM Solds	36	36	29	22	24	24	23	27	32	33	36	43	
Average Sale Price	\$335,118	\$339,059	\$352,997	\$355,185	\$366,755	\$370,436	\$364,446	\$367,177	\$365,913	\$373,237	\$375,255	\$368,570	\$361,179
Average Active Price	\$479,813	\$505,991	\$514,178	\$521,826	\$527,852	\$532,372	\$528,427	\$521,589	\$506,255	\$515,152	\$532,076	\$524,042	
Median Sales Price	\$307,158	\$315,000	\$318,000	\$320,000	\$332,000	\$335,000	\$328,000	\$336,450	\$332,000	\$333,000	\$335,000	\$334,900	\$332,000
Median Active Price	\$390,000	\$409,900	\$399,900	\$399,750	\$399,990	\$406,950	\$410,000	\$404,000	\$395,000	\$395,000	\$414,322	\$418,400	

2020	Jan	Feb	March	April	May	June	July	August	Sept	Oct	Nov	Dec	Change
Active	1,363	1,630	1,827	1,664	1,314	1,127	935	852	674	517	413	364	
Solds	576	702	898	792	966	1,276	1,320	1,216	1,184	1,132	935	890	
YTD Solds	576	1278	2176	2968	3934	5210	6530	7746	8930	10062	10997	11887	11.57%
Ratio Sales/List	42.3%	43.1%	49.2%	47.6%	73.5%	113.2%	141.2%	142.7%	175.7%	219.0%	226.4%	244.5%	
DOM Active	61	36	40	47	48	50	34	34	33	42	63	44	
DOM Solds	37	34	23	12	15	19	15	10	9	8	8	7	
Average Sale Price	\$373,120	\$381,685	\$390,066	\$380,781	\$369,310	\$388,448	\$393,925	\$411,987	\$414,819	\$418,469	\$427,746	\$447,937	\$399,858
Average Active Price	\$565,738	\$540,277	\$514,472	\$556,518	\$595,610	\$614,839	\$677,582	\$712,214	\$842,481	\$933,006	\$990,996	#####	
Median Sales Price	\$330,000	\$342,000	\$345,500	\$349,900	\$333,854	\$354,245	\$352,150	\$365,000	\$365,000	\$366,900	\$380,000	\$392,000	\$353,198
Median Active Price	\$439,000	\$419,900	\$415,000	\$432,150	\$447,975	\$459,900	\$478,000	\$499,994	\$515,945	\$569,600	\$580,000	\$541,950	

[illegible]

**Residential-Single Family -- Utah and Juab Counties**

2016	Jan	Feb	March	April	May	June	July	August	Sept	Oct	Nov	Dec	Change
Active	1,302	1,383	1,503	1,608	1,703	1,778	1,821	1,778	1,711	1,604	1,308	1,289	
Solds	366	406	544	550	620	724	620	714	651	505	526	514	
YTD Solds	366	772	1316	1866	2486	3210	3830	4544	5195	5700	6226	6740	
Ratio Sales/List	28.1%	29.4%	36.2%	34.2%	36.4%	40.7%	34.0%	40.2%	38.0%	31.5%	40.2%	39.9%	
DOM Active	29	24	49	48	53	53	55	65	57	60	82	84	
DOM Solds	33	34	21	16	12	12	19	19	20	24	25	35	
Average Sale Price	\$293,725	\$299,266	\$297,774	\$303,817	\$315,155	\$316,594	\$336,169	\$328,796	\$321,889	\$307,832	\$321,021	\$318,382	\$313,368
Average Active Price	\$422,242	\$410,256	\$523,038	\$527,091	\$514,266	\$517,997	\$512,928	\$514,355	\$524,976	\$529,739	\$548,013	\$552,460	
Median Sales Price	\$263,500	\$270,000	\$270,000	\$276,525	\$289,450	\$287,250	\$293,500	\$303,875	\$285,000	\$274,000	\$279,900	\$284,674	\$282,287
Median Active Price	\$358,900	\$354,900	\$360,900	\$362,900	\$359,900	\$359,000	\$354,400	\$354,000	\$356,495	\$359,945	\$373,272	\$375,000	
2017	Jan	Feb	March	April	May	June	July	August	Sept	Oct	Nov	Dec	Change
Active	1,230	1,307	1,361	1,429	1,576	1,654	1,777	1,702	1,623	1,485	1,407	1,229	
Solds	358	391	503	524	610	677	590	723	624	615	552	500	
YTD Solds	358	749	1252	1776	2386	3063	3653	4376	5000	5615	6167	6667	-1.08%
Ratio Sales/List	29.1%	29.9%	37.0%	36.7%	38.7%	40.9%	33.2%	42.5%	38.4%	41.4%	39.2%	40.7%	
DOM Active	55	41	40	40	41	41	41	52	61	66	65	65	
DOM Solds	34	40	26	13	13	15	16	20	25	27	34	32	
Average Sale Price	\$322,358	\$322,309	\$323,516	\$341,404	\$340,917	\$340,572	\$341,362	\$354,984	\$355,978	\$359,671	\$361,488	\$341,450	\$342,167
Average Active Price	\$566,370	\$562,483	\$582,889	\$583,316	\$576,230	\$559,279	\$542,391	\$538,245	\$546,788	\$549,973	\$549,049	\$567,995	
Median Sales Price	\$285,000	\$287,000	\$296,000	\$305,002	\$310,000	\$307,000	\$310,000	\$314,500	\$317,000	\$311,500	\$308,000	\$311,000	\$309,000
Median Active Price	\$381,660	\$380,000	\$389,000	\$394,170	\$399,250	\$389,900	\$387,345	\$389,000	\$389,900	\$386,990	\$386,950	\$394,900	

2018	Jan	Feb	March	April	May	June	July	August	Sept	Oct	Nov	Dec	Change
Active	1,208	1,253	1,373	1,510	1,655	1,627	1,723	1,854	1,920	1,911	1,701	1,675	
Solds	390	475	513	561	637	727	716	695	547	552	516	504	
YTD Solds	390	865	1378	1939	2576	3303	4019	4714	5261	5813	6329	6833	2.49%
Ratio Sales/List	32.3%	37.9%	37.4%	37.2%	38.5%	44.7%	41.6%	37.5%	28.5%	28.9%	30.3%	30.1%	
DOM Active	68	43	43	44	45	45	48	55	56	64	72	79	
DOM Solds	41	34	23	13	13	15	19	23	25	30	32	42	
Average Sale Price	\$347,817	\$378,178	\$349,250	\$365,373	\$383,583	\$384,773	\$377,211	\$395,106	\$384,753	\$380,247	\$382,016	\$389,807	\$376,510
Average Active Price	\$568,941	\$576,737	\$584,501	\$581,818	\$570,259	\$575,697	\$573,566	\$558,114	\$551,456	\$549,671	\$558,247	\$529,975	
Median Sales Price	\$319,612	\$340,400	\$330,000	\$325,700	\$341,935	\$345,000	\$350,000	\$345,928	\$347,000	\$340,384	\$344,500	\$354,350	\$343,218
Median Active Price	\$408,850	\$414,990	\$415,550	\$424,900	\$423,555	\$425,000	\$419,999	\$414,900	\$415,669	\$410,900	\$417,000	\$416,900	

2019	Jan	Feb	March	April	May	June	July	August	Sept	Oct	Nov	Dec	Change
Active	1,670	1,691	1,727	1,794	1,916	1,886	1,909	1,846	1,871	1,562	1,424	1,239	
Solds	382	408	574	641	804	734	801	812	644	673	573	587	
YTD Solds	382	790	1364	2005	2809	3543	4344	5156	5800	6473	7046	7633	11.71%
Ratio Sales/List	22.9%	24.1%	33.2%	35.7%	42.0%	38.9%	42.0%	44.0%	34.4%	43.1%	40.2%	47.4%	
DOM Active	74	69	59	51	54	55	56	56	63	66	78	75	
DOM Solds	46	43	33	24	26	26	25	30	35	35	39	45	
Average Sale Price	\$373,895	\$377,636	\$395,446	\$401,011	\$406,123	\$407,632	\$410,948	\$408,132	\$407,106	\$415,587	\$416,317	\$408,723	\$402,380
Average Active Price	\$530,237	\$555,792	\$574,730	\$577,084	\$584,859	\$595,776	\$584,488	\$576,964	\$561,259	\$580,650	\$591,521	\$586,936	
Median Sales Price	\$345,755	\$353,052	\$355,000	\$360,000	\$369,450	\$365,000	\$362,000	\$372,000	\$367,000	\$365,000	\$369,900	\$365,000	\$365,000
Median Active Price	\$424,850	\$439,900	\$439,000	\$436,900	\$437,950	\$450,450	\$449,900	\$439,900	\$432,900	\$441,987	\$454,950	\$456,900	
2020	Jan	Feb	March	April	May	June	July	August	Sept	Oct	Nov	Dec	Change
Active	1,140	1,318	1,437	1,307	995	895	739	675	544	437	346	293	
Solds	392	498	622	556	643	890	867	818	820	785	672	659	
YTD Solds	392	890	1512	2068	2711	3601	4468	5286	6106	6891	7563	8222	7.72%
Ratio Sales/List	34.4%	37.8%	43.3%	42.5%	64.6%	99.4%	117.3%	121.2%	150.7%	179.6%	194.2%	224.9%	
DOM Active	72	50	46	53	59	54	39	36	36	48	74	62	
DOM Solds	45	39	26	12	16	22	16	10	10	10	9	9	
Average Sale Price	\$422,482	\$429,013	\$437,222	\$425,718	\$416,993	\$437,396	\$455,573	\$475,681	\$477,107	\$478,157	\$482,156	\$502,558	\$453,338
Average Active Price	\$618,699	\$598,988	\$574,495	\$627,451	\$688,853	\$697,340	\$776,879	\$822,543	\$966,787	\$1,039,832	\$1,110,416	\$1,163,890	
Median Sales Price	\$371,507	\$379,900	\$385,000	\$384,000	\$375,000	\$390,500	\$402,967	\$415,000	\$411,000	\$419,900	\$425,000	\$433,000	\$396,734
Median Active Price	\$469,000	\$455,900	\$458,970	\$475,000	\$500,000	\$506,900	\$538,900	\$574,900	\$592,150	\$612,900	\$615,000	\$604,980	

[illegible]

**Condominium -- Utah and Juab Counties**

2016	Jan	Feb	March	April	May	June	July	August	Sept	Oct	Nov	Dec	Change
Active	80	78	68	89	91	99	86	102	77	88	76	75	
Solds	37	36	72	80	83	82	84	84	68	65	54	74	
YTD Solds	37	73	145	225	308	390	474	558	626	691	745	819	
Ratio Sales/List	46.3%	46.2%	105.9%	89.9%	91.2%	82.8%	97.7%	82.4%	88.3%	73.9%	71.1%	98.7%	
DOM Active	24	22	29	21	25	29	38	33	41	42	35	41	
DOM Solds	22	12	8	12	10	6	9	15	7	10	12	18	
Average Sale Price	\$142,359	\$138,378	\$152,366	\$157,004	\$166,307	\$162,045	\$160,025	\$157,466	\$157,589	\$160,209	\$171,257	\$170,157	\$157,930
Average Active Price	\$184,410	\$171,544	\$210,694	\$196,893	\$194,751	\$187,998	\$188,077	\$180,883	\$180,753	\$183,439	\$200,754	\$188,797	
Median Sales Price	\$138,900	\$143,000	\$151,250	\$141,500	\$155,000	\$154,000	\$152,000	\$155,000	\$153,000	\$148,500	\$178,000	\$284,674	\$152,500
Median Active Price	\$149,900	\$147,900	\$155,950	\$162,000	\$165,000	\$172,900	\$179,900	\$179,900	\$179,900	\$182,900	\$185,900	\$185,900	

2017	Jan	Feb	March	April	May	June	July	August	Sept	Oct	Nov	Dec	Change
Active	48	35	29	60	71	83	112	98	71	51	30	22	
Solds	52	46	66	91	94	113	92	114	88	95	88	100	
YTD Solds	52	98	164	255	349	462	554	668	756	851	939	1039	26.86%
Ratio Sales/List	108.3%	131.4%	227.6%	151.7%	132.4%	136.1%	82.1%	116.3%	123.9%	186.3%	293.3%	454.5%	
DOM Active	35	12	15	15	14	23	23	37	50	27	38	46	
DOM Solds	8	11	5	4	5	7	9	11	15	20	16	13	
Average Sale Price	\$170,925	\$176,148	\$176,315	\$177,894	\$181,179	\$187,531	\$174,223	\$186,840	\$174,241	\$193,937	\$182,868	\$184,401	\$180,542
Average Active Price	\$194,413	\$208,459	\$208,189	\$216,480	\$203,644	\$199,344	\$193,098	\$182,528	\$181,208	\$187,388	\$179,989	\$188,309	
Median Sales Price	\$167,000	\$161,000	\$172,000	\$180,000	\$179,608	\$182,900	\$169,000	\$176,000	\$171,450	\$182,900	\$180,000	\$186,000	\$177,804
Median Active Price	\$197,400	\$189,900	\$180,000	\$202,900	\$179,900	\$179,900	\$186,250	\$179,900	\$175,000	\$189,900	\$171,700	\$191,700	

2018	Jan	Feb	March	April	May	June	July	August	Sept	Oct	Nov	Dec	Change
Active	22	27	57	56	55	65	98	112	122	129	146	131	
Solds	68	73	73	66	73	84	72	78	77	66	70	69	
YTD Solds	68	141	214	280	353	437	509	587	664	730	800	869	-16.36%
Ratio Sales/List	309.1%	270.4%	128.1%	117.9%	132.7%	129.2%	73.5%	69.6%	63.1%	51.2%	47.9%	52.7%	
DOM Active	12	18	7	24	18	26	26	34	51	48	58	72	
DOM Solds	12	12	6	5	5	6	7	10	6	9	10	13	
Average Sale Price	\$186,020	\$195,208	\$193,313	\$203,141	\$196,725	\$196,926	\$199,442	\$209,677	\$201,267	\$207,170	\$200,639	\$206,831	\$199,697
Average Active Price	\$213,536	\$233,214	\$231,779	\$238,569	\$235,149	\$232,900	\$227,029	\$228,854	\$232,719	\$233,448	\$242,595	\$233,811	
Median Sales Price	\$185,000	\$194,500	\$191,000	\$183,000	\$188,700	\$195,000	\$194,750	\$203,040	\$194,000	\$202,500	\$195,950	\$205,000	\$194,625
Median Active Price	\$210,859	\$217,660	\$224,900	\$226,900	\$225,000	\$229,404	\$226,900	\$228,450	\$230,500	\$232,900	\$232,900	\$232,900	

### Condominium -- Utah and Juab Counties

2019	Jan	Feb	March	April	May	June	July	August	Sept	Oct	Nov	Dec	Change
Active	121	96	158	130	169	186	167	145	159	135	95	135	
Solds	59	65	70	106	99	77	132	116	84	99	70	72	
YTD Solds	59	124	194	300	399	476	608	724	808	907	977	1049	20.71%
Ratio Sales/List	48.8%	67.7%	44.3%	81.5%	58.6%	41.4%	79.0%	80.0%	52.8%	73.3%	73.7%	53.3%	
DOM Active	67	55	20	45	26	39	46	69	24	41	64	14	
DOM Solds	15	26	8	12	13	16	14	18	18	31	30	33	
Average Sale Price	\$213,254	\$227,331	\$206,689	\$215,362	\$213,929	\$225,373	\$202,811	\$224,252	\$217,312	\$221,025	\$214,915	\$223,417	\$217,139
Average Active Price	\$226,220	\$234,531	\$236,500	\$237,556	\$232,992	\$231,764	\$234,334	\$230,992	\$236,460	\$236,014	\$241,113	\$240,652	
Median Sales Price	\$213,840	\$220,295	\$215,500	\$216,250	\$209,000	\$224,999	\$199,950	\$219,250	\$216,000	\$225,000	\$223,700	\$223,000	\$217,750
Median Active Price	\$229,000	\$231,000	\$232,900	\$235,000	\$237,000	\$237,000	\$237,000	\$236,000	\$237,000	\$234,000	\$237,000	\$238,000	

2020	Jan	Feb	March	April	May	June	July	August	Sept	Oct	Nov	Dec	Change
Active	85	96	127	146	110	112	90	93	51	19	16	20	
Solds	59	59	66	77	101	115	172	140	143	126	98	96	
YTD Solds	59	118	184	261	362	477	649	789	932	1058	1156	1252	19.35%
Ratio Sales/List	69.4%	61.5%	52.0%	52.7%	91.8%	102.7%	191.1%	150.5%	280.4%	663.2%	612.5%	480.0%	
DOM Active	42	12	24	28	42	25	26	24	33	18	13	5	
DOM Solds	35	18	17	9	15	11	15	11	10	7	7	7	
Average Sale Price	\$227,496	\$228,491	\$233,816	\$224,233	\$225,875	\$226,205	\$236,168	\$230,949	\$237,129	\$240,782	\$247,808	\$259,523	\$234,873
Average Active Price	\$240,217	\$240,611	\$246,950	\$226,629	\$254,642	\$261,355	\$263,318	\$251,777	\$248,754	\$236,100	\$247,612	\$281,890	
Median Sales Price	\$228,000	\$225,900	\$227,000	\$226,000	\$225,505	\$226,597	\$239,000	\$234,691	\$235,000	\$239,500	\$243,312	\$248,750	\$231,346
Median Active Price	\$232,900	\$237,900	\$239,900	\$241,900	\$245,000	\$254,900	\$262,400	\$258,900	\$249,900	\$239,900	\$239,000	\$287,900	

[illegible]

**Homes From \$250,000-\$499,999– Utah and Juab Counties**

2016	Jan	Feb	March	April	May	June	July	August	Sept	Oct	Nov	Dec	Change
Active	920	938	1,011	1,065	1,131	1,162	1,197	1,152	1,107	1,079	932	911	
Solds	195	231	319	342	398	451	374	481	387	298	308	343	
YTD Solds	195	426	745	1087	1485	1936	2310	2791	3178	3476	3784	4127	
Ratio Sales/List	21.2%	24.6%	31.6%	32.1%	35.2%	38.8%	31.2%	41.8%	35.0%	27.6%	33.0%	37.7%	
DOM Active	30	24	47	48	51	50	52	61	53	52	70	72	
DOM Solds	34	42	29	19	14	17	20	22	24	27	28	39	

2017	Jan	Feb	March	April	May	June	July	August	Sept	Oct	Nov	Dec	Change
Active	876	908	938	1,011	1,115	1,203	1,302	1,292	1,208	1,082	1,075	976	
Solds	230	247	352	384	452	539	456	583	482	504	450	390	
YTD Solds	230	477	829	1213	1665	2204	2660	3243	3725	4229	4679	5069	22.83%
Ratio Sales/List	26.3%	27.2%	37.5%	38.0%	40.5%	44.8%	35.0%	45.1%	39.9%	46.6%	41.9%	40.0%	
DOM Active	41	34	34	35	38	35	35	47	55	54	56	52	
DOM Solds	34	47	33	15	14	15	17	19	26	24	36	35	

2018	Jan	Feb	March	April	May	June	July	August	Sept	Oct	Nov	Dec	Change
Active	955	958	1,038	1,137	1,260	1,253	1,316	1,437	1,558	1,588	1,443	1,441	
Solds	309	385	437	513	591	628	662	659	533	522	491	479	
YTD Solds	309	694	1131	1644	2235	2863	3525	4184	4717	5239	5730	6209	22.49%
Ratio Sales/List	32.4%	40.2%	42.1%	45.1%	46.9%	50.1%	50.3%	45.9%	34.2%	32.9%	34.0%	33.2%	
DOM Active	48	32	40	37	37	39	39	46	43	54	66	67	
DOM Solds	42	30	24	12	11	12	16	19	24	29	32	41	

**Homes From \$250,000-\$499,999– Utah and Juab Counties**

2019	Jan	Feb	March	April	May	June	July	August	Sept	Oct	Nov	Dec	Change
Active	1,450	1,376	1,425	1,437	1,499	1,389	1,428	1,416	1,482	1,234	1,066	923	
Solds	351	399	535	617	768	720	820	821	646	662	547	610	
YTD Solds	351	750	1285	1902	2670	3390	4210	5031	5677	6339	6886	7496	20.73%
Ratio Sales/List	24.2%	29.0%	37.5%	42.9%	51.2%	51.8%	57.4%	58.0%	43.6%	53.6%	51.3%	66.1%	
DOM Active	65	59	48	43	44	46	42	43	46	52	61	53	
DOM Solds	43	43	32	26	25	27	26	30	32	31	35	41	



2020	Jan	Feb	March	April	May	June	July	August	Sept	Oct	Nov	Dec	Change
Active	773	974	1,118	940	702	590	464	381	278	194	150	146	
Solds	413	518	662	570	725	916	934	852	804	812	647	596	
YTD Solds	413	931	1593	2163	2888	3804	4738	5590	6394	7206	7853	8449	12.71%
Ratio Sales/List	53.4%	53.2%	59.2%	60.6%	103.3%	155.3%	201.3%	223.6%	289.2%	418.6%	431.3%	408.2%	
DOM Active	53	27	38	42	37	32	20	21	14	20	36	6	
DOM Solds	35	30	18	11	15	18	12	8	8	7	7	6	

[illegible]

**Homes Over \$500,000– Utah and Juab Counties**

2016	Jan	Feb	March	April	May	June	July	August	Sept	Oct	Nov	Dec	Change
Active	207	205	324	371	393	392	397	400	397	354	285	288	
Solds	21	22	27	33	42	54	69	54	51	35	46	35	
YTD Solds	21	43	70	103	145	199	268	322	373	408	454	489	
Ratio Sales/List	10.1%	10.7%	8.3%	8.9%	10.7%	13.8%	17.4%	13.5%	12.8%	9.9%	16.1%	12.2%	
DOM Active	35	30	74	61	73	85	96	93	97	113	131	134	
DOM Solds	70	48	98	46	29	64	45	77	79	40	86	90	

2017	Jan	Feb	March	April	May	June	July	August	Sept	Oct	Nov	Dec	Change
Active	292	311	375	405	460	463	459	424	420	386	358	324	
Solds	37	38	36	48	62	68	59	83	69	66	46	49	
YTD Solds	37	75	111	159	221	289	348	431	500	566	612	661	35.17%
Ratio Sales/List	12.7%	12.2%	9.6%	11.9%	13.5%	14.7%	12.9%	19.6%	16.4%	17.1%	12.8%	15.1%	
DOM Active	146	119	60	56	65	82	81	92	55	110	112	111	
DOM Solds	55	92	34	97	41	28	24	48	55	60	75	40	

2018	Jan	Feb	March	April	May	June	July	August	Sept	Oct	Nov	Dec	Change
Active	325	349	401	462	514	521	531	543	555	533	482	458	
Solds	40	65	48	70	87	110	90	106	71	67	68	82	
YTD Solds	40	105	153	223	310	420	510	616	687	754	822	904	36.76%
Ratio Sales/List	12.3%	18.6%	12.0%	15.2%	16.9%	21.1%	16.9%	19.5%	12.8%	12.6%	14.1%	17.9%	
DOM Active	108	76	56	55	54	63	77	78	87	94	101	115	
DOM Solds	82	49	62	40	33	34	38	39	35	55	64	48	

**Homes Over \$500,000– Utah and Juab Counties**

2019	Jan	Feb	March	April	May	June	July	August	Sept	Oct	Nov	Dec	Change
Active	467	557	574	624	680	718	714	653	633	564	564	485	
Solds	51	52	91	101	152	122	141	132	113	136	97	97	
YTD Solds	51	103	194	295	447	569	710	842	955	1091	1188	1285	42.15%
Ratio Sales/List	10.9%	9.3%	15.9%	16.2%	22.4%	17.0%	19.7%	20.2%	17.9%	24.1%	17.2%	20.0%	
DOM Active	113	101	78	70	71	75	77	98	112	97	100	101	
DOM Solds	56	56	76	44	33	48	37	33	52	49	68	69	

2020	Jan	Feb	March	April	May	June	July	August	Sept	Oct	Nov	Dec	Change
Active	492	527	570	575	510	468	431	423	354	302	248	208	
Solds	69	89	145	110	115	205	211	215	240	215	212	224	
YTD Solds	69	158	303	413	528	733	944	1159	1399	1614	1826	2050	59.53%
Ratio Sales/List	14.0%	16.9%	25.4%	19.1%	22.5%	43.8%	49.0%	50.8%	67.8%	71.2%	85.5%	107.7%	
DOM Active	95	90	72	64	70	72	57	51	62	63	92	95	
DOM Solds	86	85	51	25	24	36	39	30	27	21	25	24	

[illegible]

**Homes Over \$1,000,000– Utah and Juab Counties**

2016	Jan	Feb	March	April	May	June	July	August	Sept	Oct	Nov	Dec	Change
Active	72	74	82	95	87	90	88	85	85	81	71	71	
Solds	1	2	1	0	1	1	6	5	3	0	3	1	
YTD Solds	1	3	4	4	5	6	12	17	20	20	23	24	
Ratio Sales/List	1.4%	2.7%	1.2%	0.0%	1.1%	1.1%	6.8%	5.9%	3.5%	0.0%	4.2%	1.4%	
DOM Active	348	338	310	195	145	128	137	153	165	178	153	159	
DOM Solds	42	41	143	0	78	249	50	432	14	0	380	119	

2017	Jan	Feb	March	April	May	June	July	August	Sept	Oct	Nov	Dec	Change
Active	71	78	89	94	102	97	97	95	96	85	78	74	
Solds	2	4	3	4	4	3	3	8	5	9	4	2	
YTD Solds	2	6	9	13	17	20	23	31	36	45	49	51	112.50%
Ratio Sales/List	2.8%	5.1%	3.4%	4.3%	3.9%	3.1%	3.1%	8.4%	5.2%	10.6%	5.1%	2.7%	
DOM Active	173	176	161	121	102	131	113	144	126	174	191	183	
DOM Solds	184	137	33	19	17	301	29	79	166	61	323	109	

2018	Jan	Feb	March	April	May	June	July	August	Sept	Oct	Nov	Dec	Change
Active	69	74	85	95	101	104	116	106	108	99	97	88	
Solds	3	3	1	4	8	7	3	13	6	8	4	4	
YTD Solds	3	6	7	11	19	26	29	42	48	56	60	64	25.49%
Ratio Sales/List	4.3%	4.1%	1.2%	4.2%	7.9%	6.7%	2.6%	12.3%	5.6%	8.1%	4.1%	4.5%	
DOM Active	211	195	180	133	109	96	116	127	139	167	171	184	
DOM Solds	246	37	374	337	133	25	52	50	88	77	236	184	

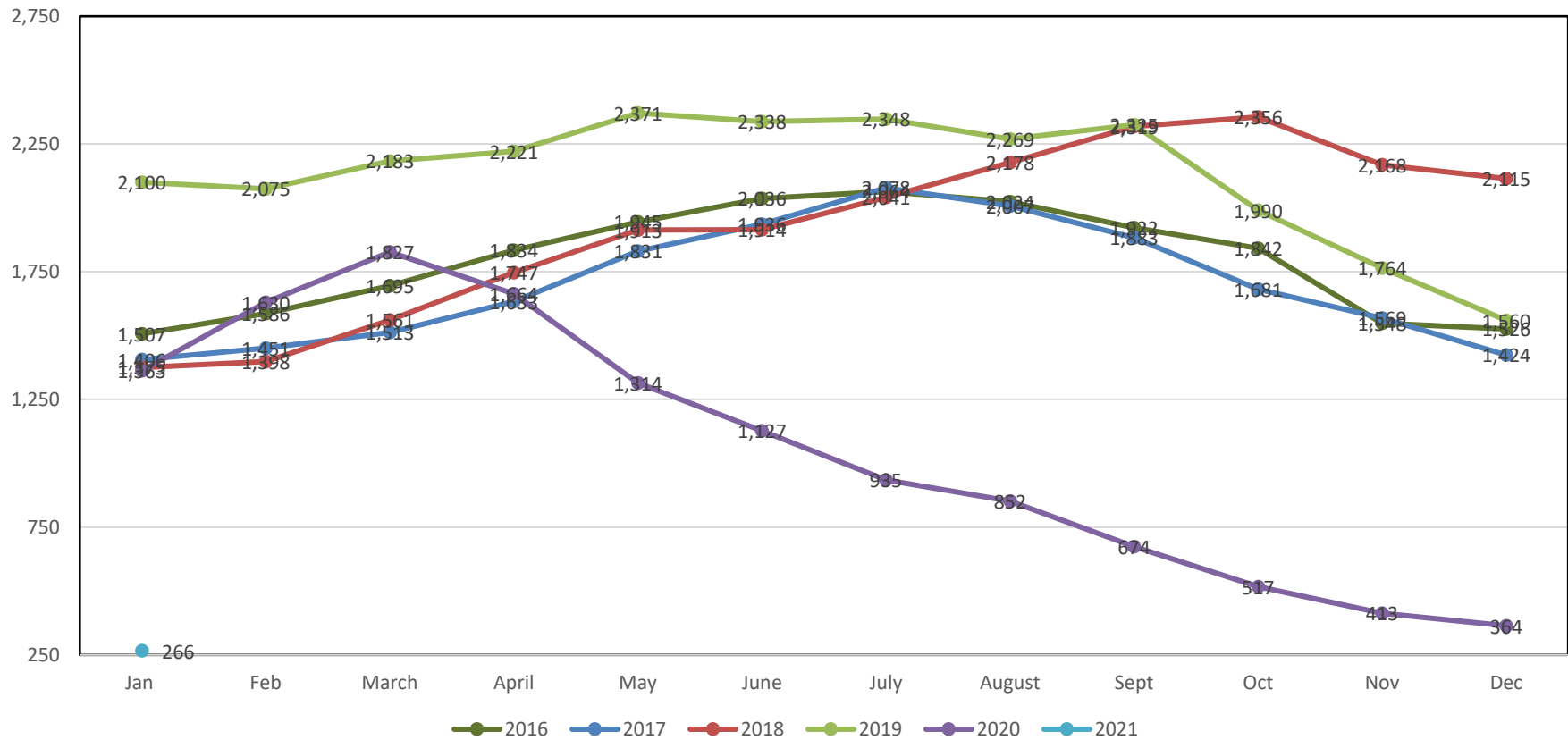
**Homes Over \$1,000,000– Utah and Juab Counties**

2019	Jan	Feb	March	April	May	June	July	August	Sept	Oct	Nov	Dec	Change
Active	86	100	101	115	138	139	134	130	116	104	93	79	
Solds	2	0	9	8	6	10	10	8	9	8	11	8	
YTD Solds	2	2	11	19	25	35	45	53	62	70	81	89	39.06%
Ratio Sales/List	2.3%	0.0%	8.9%	7.0%	4.3%	7.2%	7.5%	6.2%	7.8%	7.7%	11.8%	10.1%	
DOM Active	193	166	156	98	94	105	110	109	138	155	189	181	
DOM Solds	8	0	269	278	91	129	119	46	120	67	70	153	

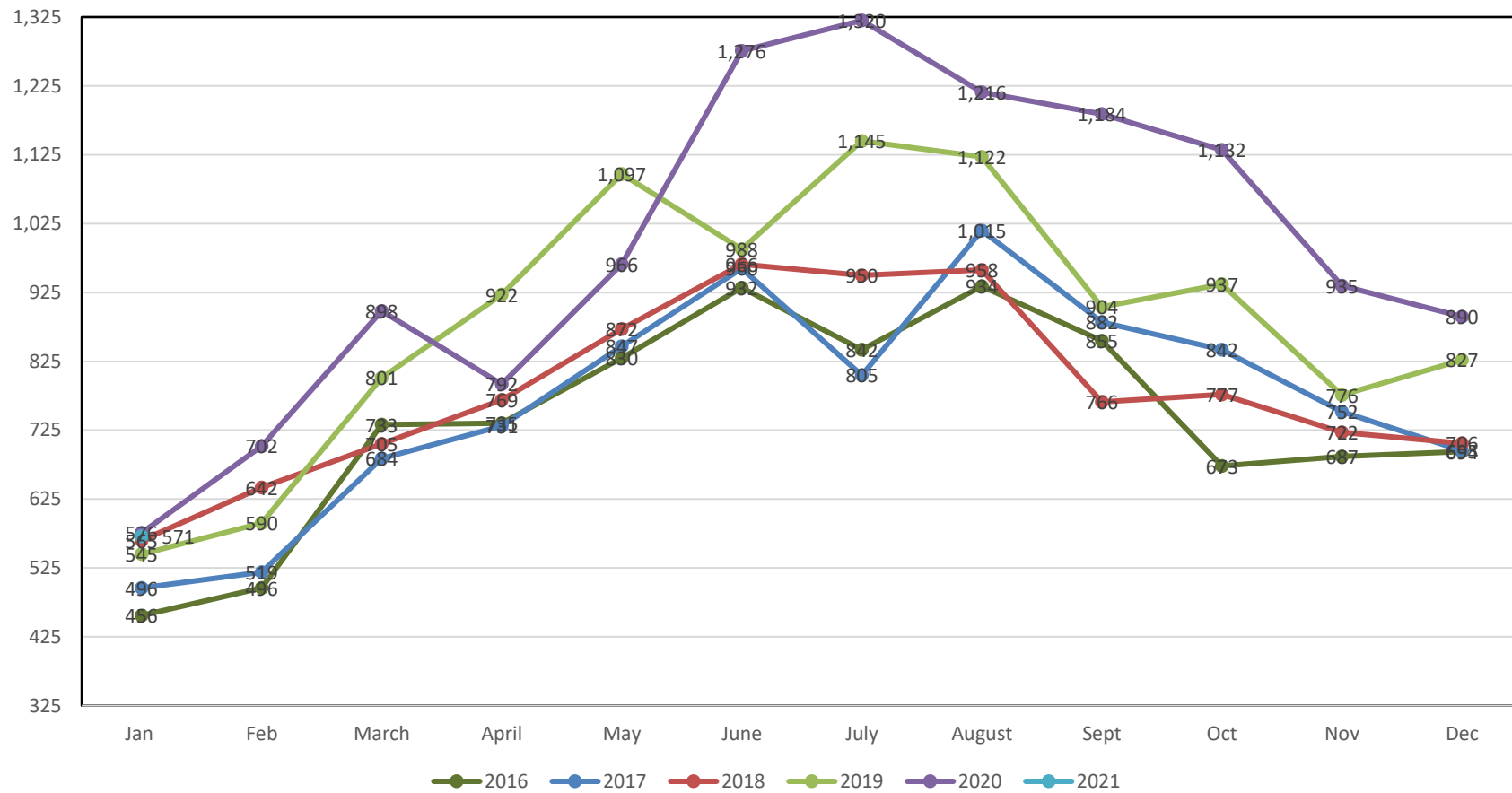
2020	Jan	Feb	March	April	May	June	July	August	Sept	Oct	Nov	Dec	Change
Active	89	96	97	111	113	107	102	93	81	74	64	53	
Solds	7	8	7	6	9	9	17	22	27	27	15	22	
YTD Solds	7	15	22	28	37	46	63	85	112	139	154	176	97.75%
Ratio Sales/List	7.9%	8.3%	7.2%	5.4%	8.0%	8.4%	16.7%	23.7%	33.3%	36.5%	23.4%	41.5%	
DOM Active	188	184	180	105	107	112	103	80	108	83	135	125	
DOM Solds	96	204	71	23	32	247	85	153	70	100	84	66	

[illegible]

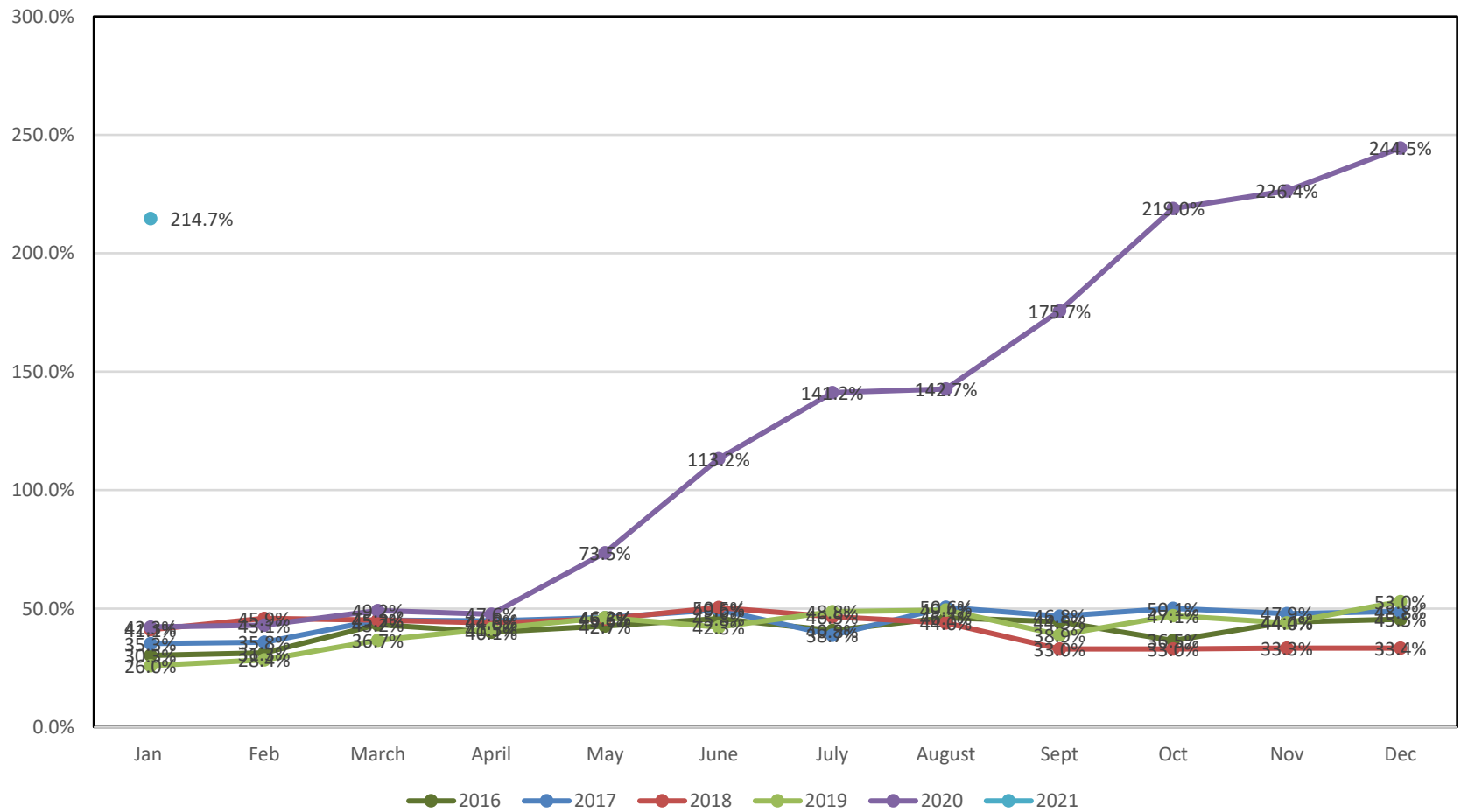
All Active Listings 2016-2021



All Units Sold 2016- 2021



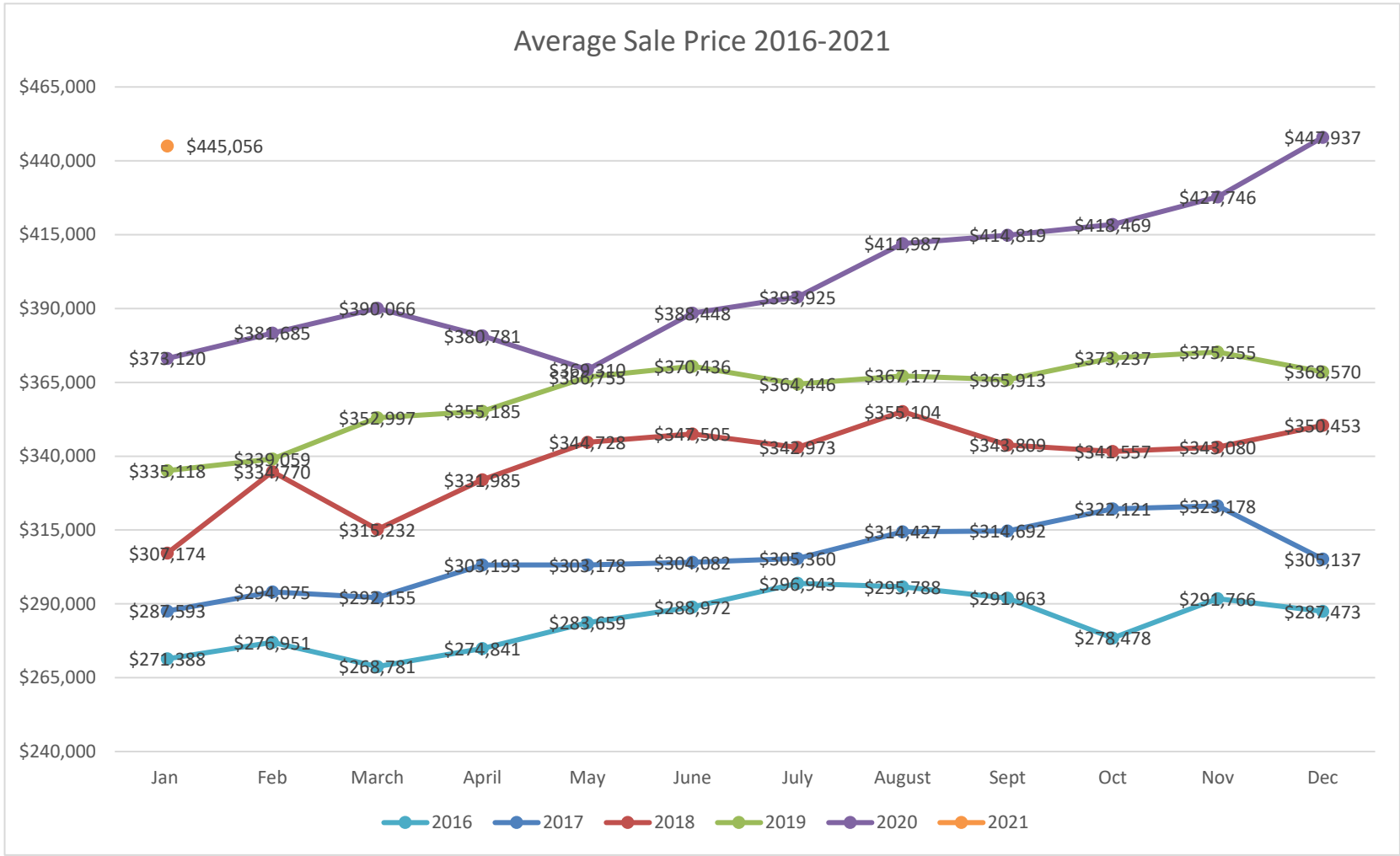
### Percentage Ratio of Sold vs. Active



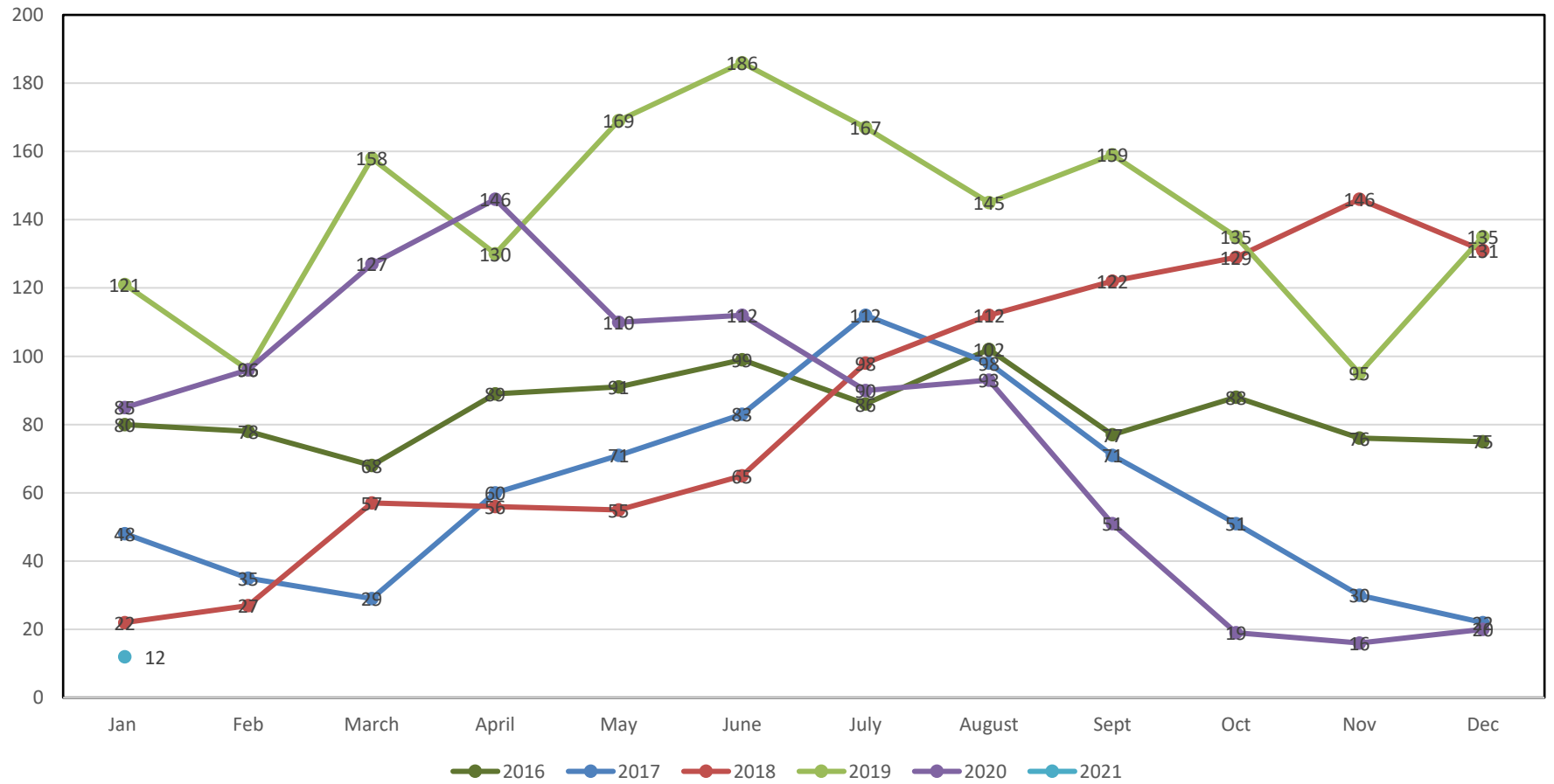


**Average Sale Price 2016-2021**

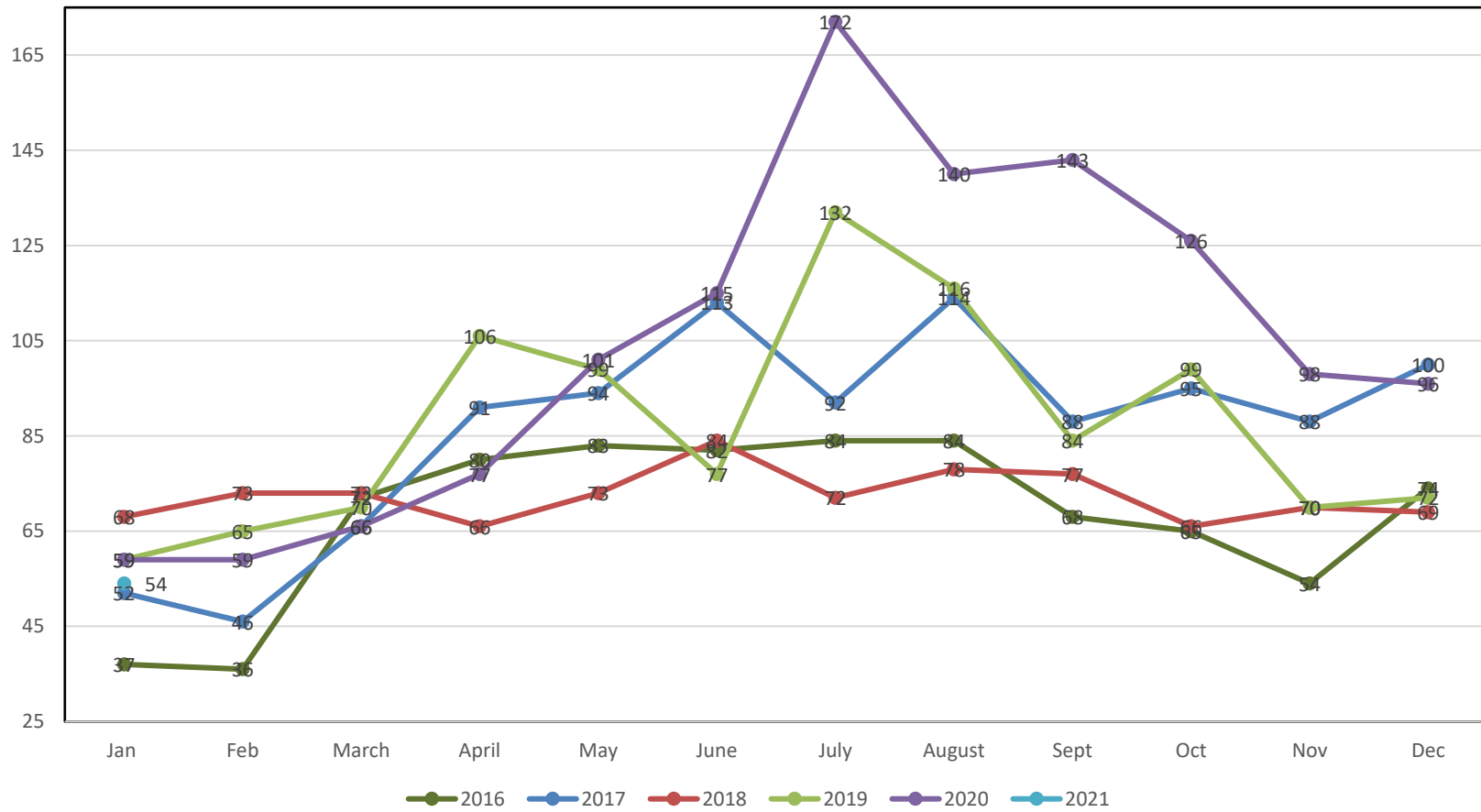
Month	2016	2017	2018	2019	2020	2021
Jan	\$271,388	\$287,593	\$307,174	\$335,118	\$373,120	
Feb	\$276,951	\$294,075	\$339,059	\$339,059	\$381,685	
March	\$268,781	\$292,155	\$315,232	\$352,997	\$390,066	
April	\$274,841	\$303,193	\$331,985	\$355,185	\$380,781	
May	\$283,659	\$303,178	\$344,728	\$368,755	\$381,310	
June	\$288,972	\$304,082	\$347,505	\$370,436	\$388,448	
July	\$296,943	\$305,360	\$342,973	\$364,446	\$393,925	
August	\$295,788	\$314,427	\$355,104	\$367,177	\$411,987	
Sept	\$291,963	\$314,692	\$343,800	\$365,913	\$414,819	
Oct	\$278,478	\$322,121	\$341,557	\$373,237	\$418,469	
Nov	\$291,766	\$323,178	\$343,080	\$375,255	\$427,746	
Dec	\$287,473	\$305,137	\$350,453	\$368,570	\$447,937	\$445,056



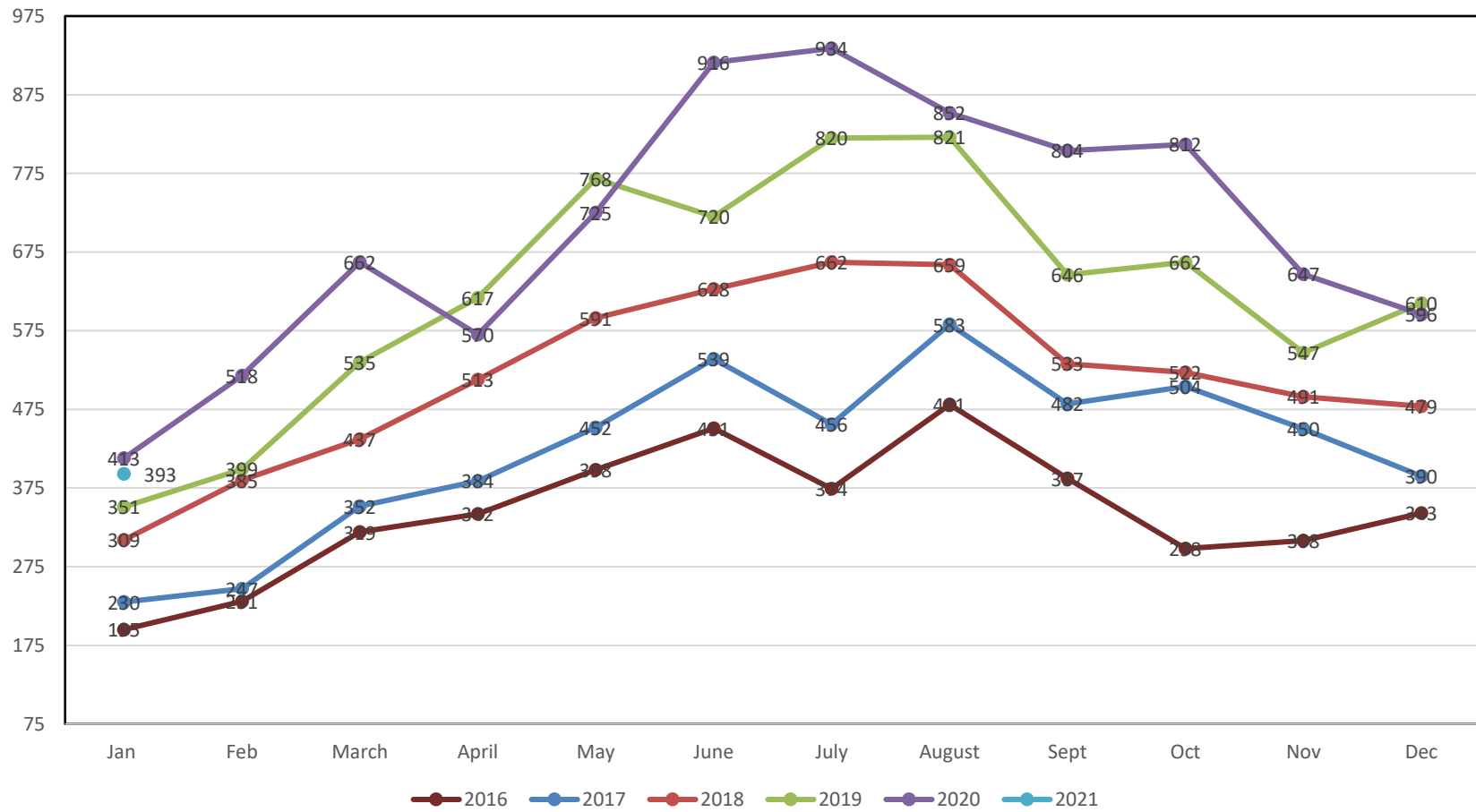
Active Condo Listings 2016-2021



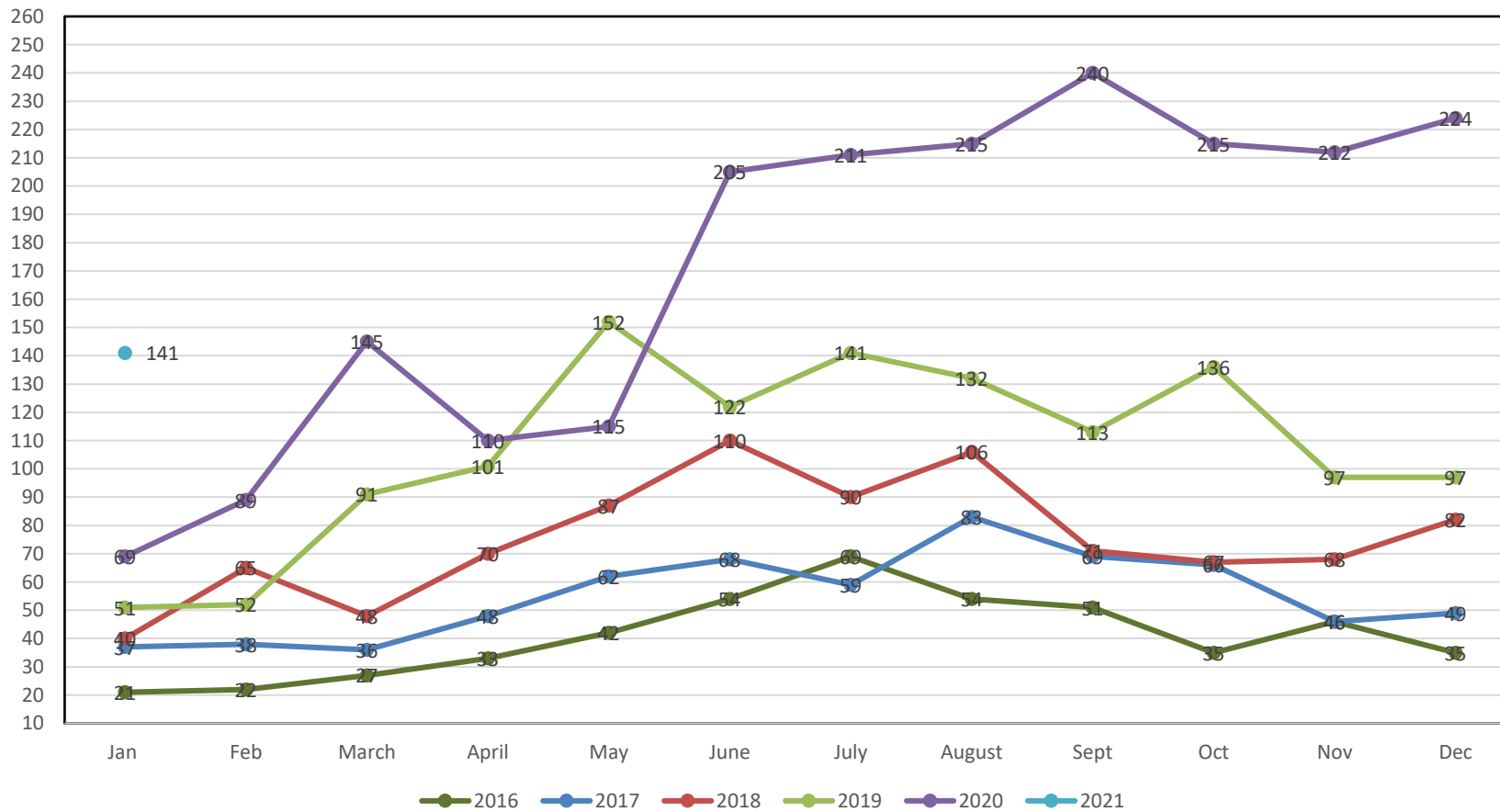
Condo's Sold 2016-2021



Properties sold for \$250,000-\$499,999 2016-2021



Properties sold for \$500,000 or more 2016-2021



Days on Market- Single Family Solds 2016-2021

