

**UTAH CENTRAL ASSOCIATION of REALTORS®**  
Monthly Statistics

To: Brokers and Agents  
From: The Utah Central Association of REALTORS®  
Subject: Monthly Statistics: September 2022

Monthly Utah and Juab County statistics provided by the Utah Central Association of REALTORS®



**All Residential Types -- Utah and Juab Counties**

| 2017                 | Jan       | Feb       | March     | April     | May       | June      | July      | August    | Sept      | Oct       | Nov       | Dec       | Change    |
|----------------------|-----------|-----------|-----------|-----------|-----------|-----------|-----------|-----------|-----------|-----------|-----------|-----------|-----------|
| Active               | 1,406     | 1,451     | 1,513     | 1,633     | 1,831     | 1,936     | 2,078     | 2,007     | 1,883     | 1,681     | 1,569     | 1,424     |           |
| Solds                | 496       | 519       | 684       | 731       | 847       | 960       | 805       | 1,015     | 882       | 842       | 752       | 695       |           |
| YTD Solds            | 496       | 1015      | 1699      | 2430      | 3277      | 4237      | 5042      | 6057      | 6939      | 7781      | 8533      | 9228      |           |
| Ratio Sales/List     | 35.3%     | 35.8%     | 45.2%     | 44.8%     | 46.3%     | 49.6%     | 38.7%     | 50.6%     | 46.8%     | 50.1%     | 47.9%     | 48.8%     |           |
| DOM Active           | 53        | 40        | 36        | 38        | 40        | 39        | 37        | 49        | 57        | 61        | 63        | 57        |           |
| DOM Solds            | 29        | 32        | 18        | 11        | 10        | 12        | 13        | 17        | 20        | 23        | 32        | 26        |           |
| Average Sale Price   | \$287,593 | \$294,075 | \$292,155 | \$303,193 | \$303,178 | \$304,082 | \$305,360 | \$314,427 | \$314,692 | \$322,121 | \$323,178 | \$305,137 | \$305,766 |
| Average Active Price | \$525,308 | \$530,601 | \$550,606 | \$542,513 | \$531,598 | \$515,312 | \$499,772 | \$494,234 | \$506,018 | \$515,347 | \$519,853 | \$526,559 |           |
| Median Sales Price   | \$257,910 | \$260,000 | \$263,100 | \$270,000 | \$271,000 | \$272,950 | \$277,032 | \$276,500 | \$272,988 | \$279,950 | \$280,000 | \$273,000 | \$272,969 |
| Median Active Price  | \$360,000 | \$365,000 | \$375,000 | \$371,990 | \$375,000 | \$369,000 | \$363,674 | \$362,990 | \$367,999 | \$368,900 | \$370,900 | \$374,010 |           |

| 2018                 | Jan       | Feb       | March     | April     | May       | June      | July      | August    | Sept      | Oct       | Nov       | Dec       | Change    |
|----------------------|-----------|-----------|-----------|-----------|-----------|-----------|-----------|-----------|-----------|-----------|-----------|-----------|-----------|
| Active               | 1,375     | 1,398     | 1,561     | 1,747     | 1,913     | 1,914     | 2,041     | 2,178     | 2,319     | 2,356     | 2,168     | 2,115     |           |
| Solds                | 565       | 642       | 705       | 769       | 872       | 966       | 950       | 958       | 766       | 777       | 722       | 706       |           |
| YTD Solds            | 565       | 1207      | 1912      | 2681      | 3553      | 4519      | 5469      | 6427      | 7193      | 7970      | 8692      | 9398      | 1.84%     |
| Ratio Sales/List     | 41.1%     | 45.9%     | 45.2%     | 44.0%     | 45.6%     | 50.5%     | 46.5%     | 44.0%     | 33.0%     | 33.0%     | 33.3%     | 33.4%     |           |
| DOM Active           | 54        | 41        | 41        | 38        | 40        | 41        | 45        | 52        | 51        | 60        | 70        | 74        |           |
| DOM Solds            | 30        | 22        | 17        | 11        | 10        | 12        | 15        | 18        | 21        | 26        | 28        | 35        |           |
| Average Sale Price   | \$307,174 | \$334,770 | \$315,232 | \$331,985 | \$344,728 | \$347,505 | \$342,973 | \$355,104 | \$343,809 | \$341,557 | \$343,080 | \$350,453 | \$338,198 |
| Average Active Price | \$533,037 | \$546,244 | \$546,999 | \$539,028 | \$530,506 | \$531,125 | \$526,348 | \$515,597 | \$503,902 | \$498,329 | \$497,916 | \$477,197 |           |
| Median Sales Price   | \$280,000 | \$300,000 | \$290,000 | \$300,000 | \$310,000 | \$317,000 | \$317,872 | \$314,487 | \$312,900 | \$309,000 | \$316,661 | \$5,757   | \$309,500 |
| Median Active Price  | \$388,876 | \$396,425 | \$395,000 | \$399,500 | \$399,000 | \$398,795 | \$395,000 | \$389,596 | \$388,089 | \$380,200 | \$379,395 | \$380,400 |           |

| 2019                 | Jan       | Feb       | March     | April     | May       | June      | July      | August    | Sept      | Oct       | Nov       | Dec       | Change    |
|----------------------|-----------|-----------|-----------|-----------|-----------|-----------|-----------|-----------|-----------|-----------|-----------|-----------|-----------|
| Active               | 2,100     | 2,075     | 2,183     | 2,221     | 2,371     | 2,338     | 2,348     | 2,269     | 2,325     | 1,990     | 1,764     | 1,560     |           |
| Solds                | 545       | 590       | 801       | 922       | 1,097     | 988       | 1,145     | 1,122     | 904       | 937       | 776       | 827       |           |
| YTD Solds            | 545       | 1135      | 1936      | 2858      | 3955      | 4943      | 6088      | 7210      | 8114      | 9051      | 9827      | 10654     | 13.36%    |
| Ratio Sales/List     | 26.0%     | 28.4%     | 36.7%     | 41.5%     | 46.3%     | 42.3%     | 48.8%     | 49.4%     | 38.9%     | 47.1%     | 44.0%     | 53.0%     |           |
| DOM Active           | 68        | 64        | 51        | 48        | 52        | 52        | 54        | 55        | 57        | 55        | 67        | 64        |           |
| DOM Solds            | 36        | 36        | 29        | 22        | 24        | 24        | 23        | 27        | 32        | 33        | 36        | 43        |           |
| Average Sale Price   | \$335,118 | \$339,059 | \$352,997 | \$355,185 | \$366,755 | \$370,436 | \$364,446 | \$367,177 | \$365,913 | \$373,237 | \$375,255 | \$368,570 | \$361,179 |
| Average Active Price | \$479,813 | \$505,991 | \$514,178 | \$521,826 | \$527,852 | \$532,372 | \$528,427 | \$521,589 | \$506,255 | \$515,152 | \$532,076 | \$524,042 |           |
| Median Sales Price   | \$307,158 | \$315,000 | \$318,000 | \$320,000 | \$332,000 | \$335,000 | \$328,000 | \$336,450 | \$332,000 | \$333,000 | \$335,000 | \$334,900 | \$332,000 |
| Median Active Price  | \$390,000 | \$409,900 | \$399,900 | \$399,750 | \$399,990 | \$406,950 | \$410,000 | \$404,000 | \$395,000 | \$395,000 | \$414,322 | \$418,400 |           |

**All Residential Types -- Utah and Juab Counties**

| 2020                 | Jan       | Feb       | March     | April     | May       | June      | July      | August    | Sept      | Oct       | Nov       | Dec         | Change    |
|----------------------|-----------|-----------|-----------|-----------|-----------|-----------|-----------|-----------|-----------|-----------|-----------|-------------|-----------|
| Active               | 1,363     | 1,630     | 1,827     | 1,664     | 1,314     | 1,127     | 935       | 852       | 674       | 517       | 413       | 364         |           |
| Solds                | 576       | 702       | 898       | 792       | 966       | 1,276     | 1,320     | 1,216     | 1,184     | 1,132     | 935       | 890         |           |
| YTD Solds            | 576       | 1278      | 2176      | 2968      | 3934      | 5210      | 6530      | 7746      | 8930      | 10062     | 10997     | 11887       | 11.57%    |
| Ratio Sales/List     | 42.3%     | 43.1%     | 49.2%     | 47.6%     | 73.5%     | 113.2%    | 141.2%    | 142.7%    | 175.7%    | 219.0%    | 226.4%    | 244.5%      |           |
| DOM Active           | 61        | 36        | 40        | 47        | 48        | 50        | 34        | 34        | 33        | 42        | 63        | 44          |           |
| DOM Solds            | 37        | 34        | 23        | 12        | 15        | 19        | 15        | 10        | 9         | 8         | 8         | 7           |           |
| Average Sale Price   | \$373,120 | \$381,685 | \$390,066 | \$380,781 | \$369,310 | \$388,448 | \$393,925 | \$411,987 | \$414,819 | \$418,469 | \$427,746 | \$447,937   | \$399,858 |
| Average Active Price | \$565,738 | \$540,277 | \$514,472 | \$556,518 | \$595,610 | \$614,839 | \$677,582 | \$712,214 | \$842,481 | \$933,006 | \$990,996 | \$1,007,846 |           |
| Median Sales Price   | \$330,000 | \$342,000 | \$345,500 | \$349,900 | \$333,854 | \$354,245 | \$352,150 | \$365,000 | \$365,000 | \$366,900 | \$380,000 | \$392,000   | \$353,198 |
| Median Active Price  | \$439,000 | \$419,900 | \$415,000 | \$432,150 | \$447,975 | \$459,900 | \$478,000 | \$499,994 | \$515,945 | \$569,600 | \$580,000 | \$541,950   |           |

| 2021                 | Jan         | Feb         | March     | April     | May       | June      | July      | August    | Sept      | Oct       | Nov         | Dec         | Change    |
|----------------------|-------------|-------------|-----------|-----------|-----------|-----------|-----------|-----------|-----------|-----------|-------------|-------------|-----------|
| Active               | 266         | 317         | 490       | 561       | 771       | 863       | 845       | 897       | 846       | 700       | 506         | 410         |           |
| Solds                | 600         | 672         | 895       | 1,030     | 922       | 1,144     | 1,113     | 1,152     | 1,060     | 1,022     | 991         | 983         |           |
| YTD Solds            | 600         | 1272        | 2167      | 3197      | 4119      | 5263      | 6376      | 7528      | 8588      | 9610      | 10601       | 11584       | -2.55%    |
| Ratio Sales/List     | 225.6%      | 212.0%      | 182.7%    | 183.6%    | 119.6%    | 132.6%    | 131.7%    | 128.4%    | 125.3%    | 146.0%    | 195.8%      | 239.8%      |           |
| DOM Active           | 16          | 8           | 10        | 13        | 13        | 16        | 20        | 22        | 25        | 24        | 46          | 24          |           |
| DOM Solds            | 6           | 5           | 5         | 5         | 6         | 6         | 6         | 7         | 8         | 10        | 10          | 9           |           |
| Average Sale Price   | \$446,288   | \$445,000   | \$460,388 | \$504,347 | \$503,599 | \$520,052 | \$519,692 | \$513,966 | \$521,688 | \$536,814 | \$539,839   | \$558,016   | \$505,807 |
| Average Active Price | \$1,210,379 | \$1,124,109 | \$998,781 | \$935,990 | \$870,047 | \$824,520 | \$865,560 | \$822,821 | \$837,600 | \$911,400 | \$1,069,015 | \$1,164,340 |           |
| Median Sales Price   | \$392,900   | \$394,950   | \$405,000 | \$438,950 | \$450,000 | \$459,387 | \$460,000 | \$462,135 | \$473,041 | \$479,950 | \$478,510   | \$500,000   | \$459,694 |
| Median Active Price  | \$535,000   | \$530,213   | \$541,650 | \$554,900 | \$539,999 | \$559,900 | \$565,000 | \$537,825 | \$538,500 | \$549,975 | \$599,985   | \$646,855   |           |

| 2022                 | Jan         | Feb         | March       | April     | May       | June      | July      | August    | Sept      | Oct | Nov | Dec | Change    |
|----------------------|-------------|-------------|-------------|-----------|-----------|-----------|-----------|-----------|-----------|-----|-----|-----|-----------|
| Active               | 484         | 544         | 748         | 1,319     | 1,980     | 2,315     | 2,374     | 2,527     | 2,519     |     |     |     |           |
| Solds                | 667         | 689         | 1,010       | 960       | 1,000     | 986       | 839       | 948       | 939       |     |     |     |           |
| YTD Solds            | 667         | 1356        | 2366        | 3326      | 4326      | 5312      | 6151      | 7099      | 8038      |     |     |     | -6.40%    |
| Ratio Sales/List     | 137.8%      | 126.7%      | 135.0%      | 72.8%     | 50.5%     | 42.6%     | 35.3%     | 37.5%     | 37.3%     |     |     |     |           |
| DOM Active           | 8           | 10          | 13          | 15        | 24        | 38        | 43        | 48        | 57        |     |     |     |           |
| DOM Solds            | 8           | 6           | 6           | 6         | 6         | 9         | 14        | 18        | 29        |     |     |     |           |
| Average Sale Price   | \$556,454   | \$571,557   | \$584,420   | \$604,368 | \$610,111 | \$605,908 | \$606,711 | \$580,057 | \$561,486 |     |     |     | \$586,786 |
| Average Active Price | \$1,131,648 | \$1,096,626 | \$1,045,347 | \$890,417 | \$838,198 | \$783,895 | \$776,243 | \$750,947 | \$756,973 |     |     |     |           |
| Median Sales Price   | \$495,000   | \$520,000   | \$532,761   | \$549,150 | \$545,250 | \$537,533 | \$531,000 | \$514,500 | \$495,000 |     |     |     | \$531,000 |
| Median Active Price  | \$631,227   | \$639,900   | \$668,250   | \$634,900 | \$615,000 | \$594,000 | \$575,000 | \$559,900 | \$555,000 |     |     |     |           |

**Residential-Single Family -- Utah and Juab Counties**

| 2017                 | Jan       | Feb       | March     | April     | May       | June      | July      | August    | Sept      | Oct       | Nov       | Dec       | Change    |
|----------------------|-----------|-----------|-----------|-----------|-----------|-----------|-----------|-----------|-----------|-----------|-----------|-----------|-----------|
| Active               | 1,230     | 1,307     | 1,361     | 1,429     | 1,576     | 1,654     | 1,777     | 1,702     | 1,623     | 1,485     | 1,407     | 1,229     |           |
| Solds                | 358       | 391       | 503       | 524       | 610       | 677       | 590       | 723       | 624       | 615       | 552       | 500       |           |
| YTD Solds            | 358       | 749       | 1252      | 1776      | 2386      | 3063      | 3653      | 4376      | 5000      | 5615      | 6167      | 6667      |           |
| Ratio Sales/List     | 29.1%     | 29.9%     | 37.0%     | 36.7%     | 38.7%     | 40.9%     | 33.2%     | 42.5%     | 38.4%     | 41.4%     | 39.2%     | 40.7%     |           |
| DOM Active           | 55        | 41        | 40        | 40        | 41        | 41        | 41        | 52        | 61        | 66        | 65        | 65        |           |
| DOM Solds            | 34        | 40        | 26        | 13        | 13        | 15        | 16        | 20        | 25        | 27        | 34        | 32        |           |
| Average Sale Price   | \$322,358 | \$322,309 | \$323,516 | \$341,404 | \$340,917 | \$340,572 | \$341,362 | \$354,984 | \$355,978 | \$359,671 | \$361,488 | \$341,450 | \$342,167 |
| Average Active Price | \$566,370 | \$562,483 | \$582,889 | \$583,316 | \$576,230 | \$559,279 | \$542,391 | \$538,245 | \$546,788 | \$549,973 | \$549,049 | \$567,995 |           |
| Median Sales Price   | \$285,000 | \$287,000 | \$296,000 | \$305,002 | \$310,000 | \$307,000 | \$310,000 | \$314,500 | \$317,000 | \$311,500 | \$308,000 | \$311,000 | \$309,000 |
| Median Active Price  | \$381,660 | \$380,000 | \$389,000 | \$394,170 | \$399,250 | \$389,900 | \$387,345 | \$389,000 | \$389,900 | \$386,990 | \$386,950 | \$394,900 |           |

| 2018                 | Jan       | Feb       | March     | April     | May       | June      | July      | August    | Sept      | Oct       | Nov       | Dec       | Change    |
|----------------------|-----------|-----------|-----------|-----------|-----------|-----------|-----------|-----------|-----------|-----------|-----------|-----------|-----------|
| Active               | 1,208     | 1,253     | 1,373     | 1,510     | 1,655     | 1,627     | 1,723     | 1,854     | 1,920     | 1,911     | 1,701     | 1,675     |           |
| Solds                | 390       | 475       | 513       | 561       | 637       | 727       | 716       | 695       | 547       | 552       | 516       | 504       |           |
| YTD Solds            | 390       | 865       | 1378      | 1939      | 2576      | 3303      | 4019      | 4714      | 5261      | 5813      | 6329      | 6833      | 2.49%     |
| Ratio Sales/List     | 32.3%     | 37.9%     | 37.4%     | 37.2%     | 38.5%     | 44.7%     | 41.6%     | 37.5%     | 28.5%     | 28.9%     | 30.3%     | 30.1%     |           |
| DOM Active           | 68        | 43        | 43        | 44        | 45        | 45        | 48        | 55        | 56        | 64        | 72        | 79        |           |
| DOM Solds            | 41        | 34        | 23        | 13        | 13        | 15        | 19        | 23        | 25        | 30        | 32        | 42        |           |
| Average Sale Price   | \$347,817 | \$378,178 | \$349,250 | \$365,373 | \$383,583 | \$384,773 | \$377,211 | \$395,106 | \$384,753 | \$380,247 | \$382,016 | \$389,807 | \$376,510 |
| Average Active Price | \$568,941 | \$576,737 | \$584,501 | \$581,818 | \$570,259 | \$575,697 | \$573,566 | \$558,114 | \$551,456 | \$549,671 | \$558,247 | \$529,975 |           |
| Median Sales Price   | \$319,612 | \$340,400 | \$330,000 | \$325,700 | \$341,935 | \$345,000 | \$350,000 | \$345,928 | \$347,000 | \$340,384 | \$344,500 | \$354,350 | \$343,218 |
| Median Active Price  | \$408,850 | \$414,990 | \$415,550 | \$424,900 | \$423,555 | \$425,000 | \$419,999 | \$414,900 | \$415,669 | \$410,900 | \$417,000 | \$416,900 |           |

| 2019                 | Jan       | Feb       | March     | April     | May       | June      | July      | August    | Sept      | Oct       | Nov       | Dec       | Change    |
|----------------------|-----------|-----------|-----------|-----------|-----------|-----------|-----------|-----------|-----------|-----------|-----------|-----------|-----------|
| Active               | 1,670     | 1,691     | 1,727     | 1,794     | 1,916     | 1,886     | 1,909     | 1,846     | 1,871     | 1,562     | 1,424     | 1,239     |           |
| Solds                | 382       | 408       | 574       | 641       | 804       | 734       | 801       | 812       | 644       | 673       | 573       | 587       |           |
| YTD Solds            | 382       | 790       | 1364      | 2005      | 2809      | 3543      | 4344      | 5156      | 5800      | 6473      | 7046      | 7633      | 11.71%    |
| Ratio Sales/List     | 22.9%     | 24.1%     | 33.2%     | 35.7%     | 42.0%     | 38.9%     | 42.0%     | 44.0%     | 34.4%     | 43.1%     | 40.2%     | 47.4%     |           |
| DOM Active           | 74        | 69        | 59        | 51        | 54        | 55        | 56        | 56        | 63        | 66        | 78        | 75        |           |
| DOM Solds            | 46        | 43        | 33        | 24        | 26        | 26        | 25        | 30        | 35        | 35        | 39        | 45        |           |
| Average Sale Price   | \$373,895 | \$377,636 | \$395,446 | \$401,011 | \$406,123 | \$407,632 | \$410,948 | \$408,132 | \$407,106 | \$415,587 | \$416,317 | \$408,723 | \$402,380 |
| Average Active Price | \$530,237 | \$555,792 | \$574,730 | \$577,084 | \$584,859 | \$595,776 | \$584,488 | \$576,964 | \$561,259 | \$580,650 | \$591,521 | \$586,936 |           |
| Median Sales Price   | \$345,755 | \$353,052 | \$355,000 | \$360,000 | \$369,450 | \$365,000 | \$362,000 | \$372,000 | \$367,000 | \$365,000 | \$369,900 | \$365,000 | \$365,000 |
| Median Active Price  | \$424,850 | \$439,900 | \$439,000 | \$436,900 | \$437,950 | \$450,450 | \$449,900 | \$439,900 | \$432,900 | \$441,987 | \$454,950 | \$456,900 |           |

**Residential-Single Family -- Utah and Juab Counties**

| 2020                 | Jan       | Feb       | March     | April     | May       | June      | July      | August    | Sept      | Oct         | Nov         | Dec         | Change    |
|----------------------|-----------|-----------|-----------|-----------|-----------|-----------|-----------|-----------|-----------|-------------|-------------|-------------|-----------|
| Active               | 1,140     | 1,318     | 1,437     | 1,307     | 995       | 895       | 739       | 675       | 544       | 437         | 346         | 293         |           |
| Solds                | 392       | 498       | 622       | 556       | 643       | 890       | 867       | 818       | 820       | 785         | 672         | 659         |           |
| YTD Solds            | 392       | 890       | 1512      | 2068      | 2711      | 3601      | 4468      | 5286      | 6106      | 6891        | 7563        | 8222        | 7.72%     |
| Ratio Sales/List     | 34.4%     | 37.8%     | 43.3%     | 42.5%     | 64.6%     | 99.4%     | 117.3%    | 121.2%    | 150.7%    | 179.6%      | 194.2%      | 224.9%      |           |
| DOM Active           | 72        | 50        | 46        | 53        | 59        | 54        | 39        | 36        | 36        | 48          | 74          | 62          |           |
| DOM Solds            | 45        | 39        | 26        | 12        | 16        | 22        | 16        | 10        | 10        | 10          | 9           | 9           |           |
| Average Sale Price   | \$422,482 | \$429,013 | \$437,222 | \$425,718 | \$416,993 | \$437,396 | \$455,573 | \$475,681 | \$477,107 | \$478,157   | \$482,156   | \$502,558   | \$453,338 |
| Average Active Price | \$618,699 | \$598,988 | \$574,495 | \$627,451 | \$688,853 | \$697,340 | \$776,879 | \$822,543 | \$966,787 | \$1,039,832 | \$1,110,416 | \$1,163,890 |           |
| Median Sales Price   | \$371,507 | \$379,900 | \$385,000 | \$384,000 | \$375,000 | \$390,500 | \$402,967 | \$415,000 | \$411,000 | \$419,900   | \$425,000   | \$433,000   | \$396,734 |
| Median Active Price  | \$469,000 | \$455,900 | \$458,970 | \$475,000 | \$500,000 | \$506,900 | \$538,900 | \$574,900 | \$592,150 | \$612,900   | \$615,000   | \$604,980   |           |

| 2021                 | Jan         | Feb         | March       | April       | May         | June      | July      | August    | Sept        | Oct         | Nov         | Dec         | Change    |
|----------------------|-------------|-------------|-------------|-------------|-------------|-----------|-----------|-----------|-------------|-------------|-------------|-------------|-----------|
| Active               | 227         | 231         | 360         | 401         | 562         | 653       | 674       | 676       | 603         | 536         | 397         | 295         |           |
| Solds                | 428         | 459         | 588         | 705         | 671         | 799       | 755       | 781       | 727         | 702         | 665         | 694         |           |
| YTD Solds            | 428         | 887         | 1475        | 2180        | 2851        | 3650      | 4405      | 5186      | 5913        | 6615        | 7280        | 7974        | -3.02%    |
| Ratio Sales/List     | 188.5%      | 198.7%      | 163.3%      | 175.8%      | 119.4%      | 122.4%    | 112.0%    | 115.5%    | 120.6%      | 131.0%      | 167.5%      | 235.3%      |           |
| DOM Active           | 19          | 10          | 11          | 13          | 14          | 18        | 20        | 26        | 29          | 23          | 45          | 40          |           |
| DOM Solds            | 6           | 6           | 5           | 5           | 6           | 6         | 7         | 8         | 9           | 11          | 10          | 11          |           |
| Average Sale Price   | \$502,339   | \$510,883   | \$534,952   | \$585,072   | \$563,633   | \$593,337 | \$598,645 | \$586,659 | \$592,805   | \$608,246   | \$617,434   | \$628,728   | \$576,894 |
| Average Active Price | \$1,351,582 | \$1,397,126 | \$1,218,700 | \$1,149,503 | \$1,043,729 | \$959,195 | \$981,669 | \$964,650 | \$1,018,221 | \$1,064,747 | \$1,249,329 | \$1,453,982 |           |
| Median Sales Price   | \$436,198   | \$455,000   | \$466,163   | \$500,000   | \$497,500   | \$519,000 | \$525,000 | \$525,000 | \$529,181   | \$538,790   | \$550,000   | \$560,000   | \$522,000 |
| Median Active Price  | \$559,900   | \$599,999   | \$620,475   | \$637,950   | \$635,900   | \$635,900 | \$627,800 | \$604,970 | \$615,000   | \$614,950   | \$686,960   | \$750,000   |           |

| 2022                 | Jan         | Feb         | March       | April       | May       | June      | July      | August    | Sept      | Oct | Nov | Dec | Change    |
|----------------------|-------------|-------------|-------------|-------------|-----------|-----------|-----------|-----------|-----------|-----|-----|-----|-----------|
| Active               | 340         | 388         | 559         | 953         | 1,435     | 1,662     | 1,690     | 1,738     | 1,740     |     |     |     |           |
| Solds                | 449         | 452         | 679         | 663         | 675       | 682       | 549       | 616       | 586       |     |     |     |           |
| YTD Solds            | 449         | 901         | 1580        | 2243        | 2918      | 3600      | 4149      | 4765      | 5351      |     |     |     | -9.50%    |
| Ratio Sales/List     | 132.1%      | 116.5%      | 121.5%      | 69.6%       | 47.0%     | 41.0%     | 32.5%     | 35.4%     | 33.7%     |     |     |     |           |
| DOM Active           | 14          | 15          | 18          | 19          | 24        | 39        | 48        | 54        | 58        |     |     |     |           |
| DOM Solds            | 10          | 6           | 6           | 6           | 6         | 10        | 16        | 21        | 33        |     |     |     |           |
| Average Sale Price   | \$634,057   | \$657,206   | \$667,967   | \$684,122   | \$697,384 | \$687,763 | \$703,541 | \$666,921 | \$658,094 |     |     |     | \$673,006 |
| Average Active Price | \$1,423,794 | \$1,354,197 | \$1,241,332 | \$1,052,693 | \$982,176 | \$919,458 | \$912,751 | \$896,160 | \$903,322 |     |     |     |           |
| Median Sales Price   | \$560,000   | \$590,000   | \$599,175   | \$617,500   | \$628,450 | \$615,000 | \$633,517 | \$595,000 | \$598,000 |     |     |     | \$599,175 |
| Median Active Price  | \$799,200   | \$792,500   | \$773,500   | \$735,000   | \$709,400 | \$677,995 | \$659,900 | \$659,000 | \$659,900 |     |     |     |           |

**Condominium -- Utah and Juab Counties**

| 2017                 | Jan       | Feb       | March     | April     | May       | June      | July      | August    | Sept      | Oct       | Nov       | Dec       | Change    |
|----------------------|-----------|-----------|-----------|-----------|-----------|-----------|-----------|-----------|-----------|-----------|-----------|-----------|-----------|
| Active               | 48        | 35        | 29        | 60        | 71        | 83        | 112       | 98        | 71        | 51        | 30        | 22        |           |
| Solds                | 52        | 46        | 66        | 91        | 94        | 113       | 92        | 114       | 88        | 95        | 88        | 100       |           |
| YTD Solds            | 52        | 98        | 164       | 255       | 349       | 462       | 554       | 668       | 756       | 851       | 939       | 1039      |           |
| Ratio Sales/List     | 108.3%    | 131.4%    | 227.6%    | 151.7%    | 132.4%    | 136.1%    | 82.1%     | 116.3%    | 123.9%    | 186.3%    | 293.3%    | 454.5%    |           |
| DOM Active           | 35        | 12        | 15        | 15        | 14        | 23        | 23        | 37        | 50        | 27        | 38        | 46        |           |
| DOM Solds            | 8         | 11        | 5         | 4         | 5         | 7         | 9         | 11        | 15        | 20        | 16        | 13        |           |
| Average Sale Price   | \$170,925 | \$176,148 | \$176,315 | \$177,894 | \$181,179 | \$187,531 | \$174,223 | \$186,840 | \$174,241 | \$193,937 | \$182,868 | \$184,401 | \$180,542 |
| Average Active Price | \$194,413 | \$208,459 | \$208,189 | \$216,480 | \$203,644 | \$199,344 | \$193,098 | \$182,528 | \$181,208 | \$187,388 | \$179,989 | \$188,309 |           |
| Median Sales Price   | \$167,000 | \$161,000 | \$172,000 | \$180,000 | \$179,608 | \$182,900 | \$169,000 | \$176,000 | \$171,450 | \$182,900 | \$180,000 | \$186,000 | \$177,804 |
| Median Active Price  | \$197,400 | \$189,900 | \$180,000 | \$202,900 | \$179,900 | \$179,900 | \$186,250 | \$179,900 | \$175,000 | \$189,900 | \$171,700 | \$191,700 |           |

| 2018                 | Jan       | Feb       | March     | April     | May       | June      | July      | August    | Sept      | Oct       | Nov       | Dec       | Change    |
|----------------------|-----------|-----------|-----------|-----------|-----------|-----------|-----------|-----------|-----------|-----------|-----------|-----------|-----------|
| Active               | 22        | 27        | 57        | 56        | 55        | 65        | 98        | 112       | 122       | 129       | 146       | 131       |           |
| Solds                | 68        | 73        | 73        | 66        | 73        | 84        | 72        | 78        | 77        | 66        | 70        | 69        |           |
| YTD Solds            | 68        | 141       | 214       | 280       | 353       | 437       | 509       | 587       | 664       | 730       | 800       | 869       | -16.36%   |
| Ratio Sales/List     | 309.1%    | 270.4%    | 128.1%    | 117.9%    | 132.7%    | 129.2%    | 73.5%     | 69.6%     | 63.1%     | 51.2%     | 47.9%     | 52.7%     |           |
| DOM Active           | 12        | 18        | 7         | 24        | 18        | 26        | 26        | 34        | 51        | 48        | 58        | 72        |           |
| DOM Solds            | 12        | 12        | 6         | 5         | 5         | 6         | 7         | 10        | 6         | 9         | 10        | 13        |           |
| Average Sale Price   | \$186,020 | \$195,208 | \$193,313 | \$203,141 | \$196,725 | \$196,926 | \$199,442 | \$209,677 | \$201,267 | \$207,170 | \$200,639 | \$206,831 | \$199,697 |
| Average Active Price | \$213,536 | \$233,214 | \$231,779 | \$238,569 | \$235,149 | \$232,900 | \$227,029 | \$228,854 | \$232,719 | \$233,448 | \$242,595 | \$233,811 |           |
| Median Sales Price   | \$185,000 | \$194,500 | \$191,000 | \$183,000 | \$188,700 | \$195,000 | \$194,750 | \$203,040 | \$194,000 | \$202,500 | \$195,950 | \$205,000 | \$194,625 |
| Median Active Price  | \$210,859 | \$217,660 | \$224,900 | \$226,900 | \$225,000 | \$229,404 | \$226,900 | \$228,450 | \$230,500 | \$232,900 | \$232,900 | \$232,900 |           |

| 2019                 | Jan       | Feb       | March     | April     | May       | June      | July      | August    | Sept      | Oct       | Nov       | Dec       | Change    |
|----------------------|-----------|-----------|-----------|-----------|-----------|-----------|-----------|-----------|-----------|-----------|-----------|-----------|-----------|
| Active               | 121       | 96        | 158       | 130       | 169       | 186       | 167       | 145       | 159       | 135       | 95        | 135       |           |
| Solds                | 59        | 65        | 70        | 106       | 99        | 77        | 132       | 116       | 84        | 99        | 70        | 72        |           |
| YTD Solds            | 59        | 124       | 194       | 300       | 399       | 476       | 608       | 724       | 808       | 907       | 977       | 1049      | 20.71%    |
| Ratio Sales/List     | 48.8%     | 67.7%     | 44.3%     | 81.5%     | 58.6%     | 41.4%     | 79.0%     | 80.0%     | 52.8%     | 73.3%     | 73.7%     | 53.3%     |           |
| DOM Active           | 67        | 55        | 20        | 45        | 26        | 39        | 46        | 69        | 24        | 41        | 64        | 14        |           |
| DOM Solds            | 15        | 26        | 8         | 12        | 13        | 16        | 14        | 18        | 18        | 31        | 30        | 33        |           |
| Average Sale Price   | \$213,254 | \$227,331 | \$206,689 | \$215,362 | \$213,929 | \$225,373 | \$202,811 | \$224,252 | \$217,312 | \$221,025 | \$214,915 | \$223,417 | \$217,139 |
| Average Active Price | \$226,220 | \$234,531 | \$236,500 | \$237,556 | \$232,992 | \$231,764 | \$234,334 | \$230,992 | \$236,460 | \$236,014 | \$241,113 | \$240,652 |           |
| Median Sales Price   | \$213,840 | \$220,295 | \$215,500 | \$216,250 | \$209,000 | \$224,999 | \$199,950 | \$219,250 | \$216,000 | \$225,000 | \$223,700 | \$223,000 | \$217,750 |
| Median Active Price  | \$229,000 | \$231,000 | \$232,900 | \$235,000 | \$237,000 | \$237,000 | \$237,000 | \$236,000 | \$237,000 | \$234,000 | \$237,000 | \$238,000 |           |

**Condominium -- Utah and Juab Counties**

| 2020                 | Jan       | Feb       | March     | April     | May       | June      | July      | August    | Sept      | Oct       | Nov       | Dec       | Change    |
|----------------------|-----------|-----------|-----------|-----------|-----------|-----------|-----------|-----------|-----------|-----------|-----------|-----------|-----------|
| Active               | 85        | 96        | 127       | 146       | 110       | 112       | 90        | 93        | 51        | 19        | 16        | 20        |           |
| Solds                | 59        | 59        | 66        | 77        | 101       | 115       | 172       | 140       | 143       | 126       | 98        | 96        |           |
| YTD Solds            | 59        | 118       | 184       | 261       | 362       | 477       | 649       | 789       | 932       | 1058      | 1156      | 1252      | 19.35%    |
| Ratio Sales/List     | 69.4%     | 61.5%     | 52.0%     | 52.7%     | 91.8%     | 102.7%    | 191.1%    | 150.5%    | 280.4%    | 663.2%    | 612.5%    | 480.0%    |           |
| DOM Active           | 42        | 12        | 24        | 28        | 42        | 25        | 26        | 24        | 33        | 18        | 13        | 5         |           |
| DOM Solds            | 35        | 18        | 17        | 9         | 15        | 11        | 15        | 11        | 10        | 7         | 7         | 7         |           |
| Average Sale Price   | \$227,496 | \$228,491 | \$233,816 | \$224,233 | \$225,875 | \$226,205 | \$236,168 | \$230,949 | \$237,129 | \$240,782 | \$247,808 | \$259,523 | \$234,873 |
| Average Active Price | \$240,217 | \$240,611 | \$246,950 | \$226,629 | \$254,642 | \$261,355 | \$263,318 | \$251,777 | \$248,754 | \$236,100 | \$247,612 | \$281,890 |           |
| Median Sales Price   | \$228,000 | \$225,900 | \$227,000 | \$226,000 | \$225,505 | \$226,597 | \$239,000 | \$234,691 | \$235,000 | \$239,500 | \$243,312 | \$248,750 | \$231,346 |
| Median Active Price  | \$232,900 | \$237,900 | \$239,900 | \$241,900 | \$245,000 | \$254,900 | \$262,400 | \$258,900 | \$249,900 | \$239,900 | \$239,000 | \$287,900 |           |

| 2021                 | Jan       | Feb       | March     | April     | May       | June      | July      | August    | Sept      | Oct       | Nov       | Dec       | Change    |
|----------------------|-----------|-----------|-----------|-----------|-----------|-----------|-----------|-----------|-----------|-----------|-----------|-----------|-----------|
| Active               | 12        | 39        | 59        | 67        | 86        | 84        | 54        | 82        | 96        | 60        | 41        | 37        |           |
| Solds                | 57        | 82        | 105       | 126       | 94        | 120       | 135       | 140       | 108       | 110       | 106       | 96        |           |
| YTD Solds            | 57        | 139       | 244       | 370       | 464       | 584       | 719       | 859       | 967       | 1077      | 1183      | 1279      | 2.16%     |
| Ratio Sales/List     | 475.0%    | 210.3%    | 178.0%    | 188.1%    | 109.3%    | 142.9%    | 250.0%    | 170.7%    | 112.5%    | 183.3%    | 258.5%    | 259.5%    |           |
| DOM Active           | 3         | 1         | 5         | 12        | 9         | 12        | 18        | 17        | 12        | 30        | 59        | 5         |           |
| DOM Solds            | 5         | 4         | 4         | 4         | 5         | 5         | 6         | 7         | 6         | 9         | 12        | 8         |           |
| Average Sale Price   | \$259,367 | \$256,793 | \$263,503 | \$283,905 | \$289,274 | \$288,755 | \$289,930 | \$302,995 | \$311,227 | \$321,123 | \$314,038 | \$326,396 | \$292,276 |
| Average Active Price | \$263,116 | \$324,320 | \$341,337 | \$338,997 | \$344,983 | \$353,693 | \$350,327 | \$331,609 | \$333,209 | \$349,436 | \$350,446 | \$353,718 |           |
| Median Sales Price   | \$250,000 | \$250,000 | \$262,121 | \$268,215 | \$282,250 | \$280,000 | \$290,000 | \$294,103 | \$312,153 | \$322,130 | \$310,000 | \$334,100 | \$286,125 |
| Median Active Price  | \$270,000 | \$342,900 | \$356,900 | \$365,900 | \$367,900 | \$369,950 | \$355,000 | \$331,500 | \$349,900 | \$364,900 | \$364,900 | \$360,000 |           |

| 2022                 | Jan       | Feb       | March     | April     | May       | June      | July      | August    | Sept      | Oct | Nov | Dec | Change    |
|----------------------|-----------|-----------|-----------|-----------|-----------|-----------|-----------|-----------|-----------|-----|-----|-----|-----------|
| Active               | 47        | 38        | 73        | 123       | 181       | 192       | 189       | 209       | 195       |     |     |     |           |
| Solds                | 76        | 69        | 118       | 106       | 117       | 112       | 79        | 98        | 88        |     |     |     |           |
| YTD Solds            | 76        | 145       | 263       | 369       | 486       | 598       | 677       | 775       | 863       |     |     |     | -10.75%   |
| Ratio Sales/List     | 161.7%    | 181.6%    | 161.6%    | 86.2%     | 64.6%     | 58.3%     | 41.8%     | 46.9%     | 45.1%     |     |     |     |           |
| DOM Active           | 7         | 2         | 7         | 15        | 29        | 40        | 44        | 45        | 56        |     |     |     |           |
| DOM Solds            | 8         | 6         | 6         | 5         | 7         | 9         | 16        | 18        | 19        |     |     |     |           |
| Average Sale Price   | \$329,949 | \$343,185 | \$365,062 | \$367,830 | \$377,703 | \$360,324 | \$360,259 | \$356,448 | \$348,509 |     |     |     | \$356,585 |
| Average Active Price | \$376,245 | \$418,131 | \$444,919 | \$437,178 | \$412,539 | \$389,567 | \$382,908 | \$377,861 | \$377,931 |     |     |     |           |
| Median Sales Price   | \$330,000 | \$345,000 | \$360,000 | \$373,636 | \$372,066 | \$366,949 | \$364,000 | \$358,500 | \$350,000 |     |     |     | \$360,000 |
| Median Active Price  | \$386,900 | \$388,900 | \$400,000 | \$395,000 | \$392,900 | \$357,950 | \$350,000 | \$349,000 | \$350,000 |     |     |     |           |

**Homes From \$250,000-\$499,999– Utah and Juab Counties**

| 2017             | Jan   | Feb   | March | April | May   | June  | July  | August | Sept  | Oct   | Nov   | Dec   | Change |
|------------------|-------|-------|-------|-------|-------|-------|-------|--------|-------|-------|-------|-------|--------|
| Active           | 876   | 908   | 938   | 1,011 | 1,115 | 1,203 | 1,302 | 1,292  | 1,208 | 1,082 | 1,075 | 976   |        |
| Solds            | 230   | 247   | 352   | 384   | 452   | 539   | 456   | 583    | 482   | 504   | 450   | 390   |        |
| YTD Solds        | 230   | 477   | 829   | 1213  | 1665  | 2204  | 2660  | 3243   | 3725  | 4229  | 4679  | 5069  |        |
| Ratio Sales/List | 26.3% | 27.2% | 37.5% | 38.0% | 40.5% | 44.8% | 35.0% | 45.1%  | 39.9% | 46.6% | 41.9% | 40.0% |        |
| DOM Active       | 41    | 34    | 34    | 35    | 38    | 35    | 35    | 47     | 55    | 54    | 56    | 52    |        |
| DOM Solds        | 34    | 47    | 33    | 15    | 14    | 15    | 17    | 19     | 26    | 24    | 36    | 35    |        |

| 2018             | Jan   | Feb   | March | April | May   | June  | July  | August | Sept  | Oct   | Nov   | Dec   | Change |
|------------------|-------|-------|-------|-------|-------|-------|-------|--------|-------|-------|-------|-------|--------|
| Active           | 955   | 958   | 1,038 | 1,137 | 1,260 | 1,253 | 1,316 | 1,437  | 1,558 | 1,588 | 1,443 | 1,441 |        |
| Solds            | 309   | 385   | 437   | 513   | 591   | 628   | 662   | 659    | 533   | 522   | 491   | 479   |        |
| YTD Solds        | 309   | 694   | 1131  | 1644  | 2235  | 2863  | 3525  | 4184   | 4717  | 5239  | 5730  | 6209  | 22.49% |
| Ratio Sales/List | 32.4% | 40.2% | 42.1% | 45.1% | 46.9% | 50.1% | 50.3% | 45.9%  | 34.2% | 32.9% | 34.0% | 33.2% |        |
| DOM Active       | 48    | 32    | 40    | 37    | 37    | 39    | 39    | 46     | 43    | 54    | 66    | 67    |        |
| DOM Solds        | 42    | 30    | 24    | 12    | 11    | 12    | 16    | 19     | 24    | 29    | 32    | 41    |        |

| 2019             | Jan   | Feb   | March | April | May   | June  | July  | August | Sept  | Oct   | Nov   | Dec   | Change |
|------------------|-------|-------|-------|-------|-------|-------|-------|--------|-------|-------|-------|-------|--------|
| Active           | 1,450 | 1,376 | 1,425 | 1,437 | 1,499 | 1,389 | 1,428 | 1,416  | 1,482 | 1,234 | 1,066 | 923   |        |
| Solds            | 351   | 399   | 535   | 617   | 768   | 720   | 820   | 821    | 646   | 662   | 547   | 610   |        |
| YTD Solds        | 351   | 750   | 1285  | 1902  | 2670  | 3390  | 4210  | 5031   | 5677  | 6339  | 6886  | 7496  | 20.73% |
| Ratio Sales/List | 24.2% | 29.0% | 37.5% | 42.9% | 51.2% | 51.8% | 57.4% | 58.0%  | 43.6% | 53.6% | 51.3% | 66.1% |        |
| DOM Active       | 65    | 59    | 48    | 43    | 44    | 46    | 42    | 43     | 46    | 52    | 61    | 53    |        |
| DOM Solds        | 43    | 43    | 32    | 26    | 25    | 27    | 26    | 30     | 32    | 31    | 35    | 41    |        |

| 2020               | Jan       | Feb       | March     | April     | May       | June      | July      | August    | Sept      | Oct       | Nov       | Dec       | Change    |
|--------------------|-----------|-----------|-----------|-----------|-----------|-----------|-----------|-----------|-----------|-----------|-----------|-----------|-----------|
| Active             | 773       | 974       | 1,118     | 940       | 702       | 590       | 464       | 381       | 278       | 194       | 150       | 146       |           |
| Solds              | 413       | 518       | 663       | 576       | 727       | 920       | 936       | 856       | 808       | 822       | 664       | 622       |           |
| YTD Solds          | 413       | 931       | 1594      | 2170      | 2897      | 3817      | 4753      | 5609      | 6417      | 7239      | 7903      | 8525      | 13.73%    |
| Ratio Sales/List   | 53.4%     | 53.2%     | 59.3%     | 61.3%     | 103.6%    | 155.9%    | 201.7%    | 224.7%    | 290.6%    | 423.7%    | 442.7%    | 426.0%    |           |
| DOM Active         | 53        | 27        | 38        | 42        | 37        | 32        | 20        | 21        | 14        | 20        | 36        | 6         |           |
| DOM Solds          | 35        | 30        | 18        | 11        | 15        | 18        | 12        | 8         | 8         | 7         | 7         | 6         |           |
| Average Sale Price | \$347,276 | \$352,148 | \$350,166 | \$355,984 | \$345,329 | \$356,735 | \$355,826 | \$362,705 | \$357,642 | \$363,000 | \$364,020 | \$371,217 | \$356,837 |
| Median Sales Price | \$33,500  | \$343,325 | \$340,000 | \$349,880 | \$334,958 | \$350,000 | \$350,000 | \$358,000 | \$352,250 | \$360,000 | \$361,485 | \$373,500 | \$350,000 |



**Homes From \$250,000-\$499,999– Utah and Juab Counties**

| 2021               | Jan       | Feb       | March     | April     | May       | June      | July      | August    | Sept      | Oct       | Nov       | Dec       | Change    |
|--------------------|-----------|-----------|-----------|-----------|-----------|-----------|-----------|-----------|-----------|-----------|-----------|-----------|-----------|
| Active             | 105       | 138       | 211       | 229       | 328       | 333       | 304       | 372       | 345       | 273       | 167       | 125       |           |
| Solds              | 412       | 450       | 595       | 643       | 561       | 677       | 621       | 654       | 585       | 556       | 537       | 470       |           |
| YTD Solds          | 412       | 862       | 1457      | 2100      | 2661      | 3338      | 3959      | 4613      | 5198      | 5754      | 6291      | 6761      | -20.69%   |
| Ratio Sales/List   | 392.4%    | 326.1%    | 282.0%    | 280.8%    | 171.0%    | 203.3%    | 204.3%    | 175.8%    | 169.6%    | 203.7%    | 321.6%    | 376.0%    |           |
| DOM Active         | 6         | 3         | 5         | 7         | 9         | 12        | 13        | 15        | 13        | 16        | 45        | 6         |           |
| DOM Solds          | 5         | 5         | 4         | 5         | 5         | 5         | 6         | 7         | 7         | 9         | 9         | 8         |           |
| Average Sale Price | \$367,004 | \$368,614 | \$372,834 | \$380,052 | \$394,512 | \$388,252 | \$389,602 | \$392,716 | \$396,789 | \$400,585 | \$399,145 | \$403,209 | \$387,776 |
| Median Sales Price | \$365,000 | \$367,750 | \$375,000 | \$381,000 | \$405,000 | \$400,000 | \$400,000 | \$395,500 | \$405,000 | \$405,750 | \$407,000 | \$410,000 | \$400,000 |

| 2022               | Jan       | Feb       | March     | April     | May       | June      | July      | August    | Sept      | Oct | Nov | Dec | Change    |
|--------------------|-----------|-----------|-----------|-----------|-----------|-----------|-----------|-----------|-----------|-----|-----|-----|-----------|
| Active             | 148       | 151       | 179       | 332       | 493       | 742       | 829       | 973       | 990       |     |     |     |           |
| Solds              | 328       | 299       | 394       | 352       | 355       | 368       | 344       | 433       | 470       |     |     |     |           |
| YTD Solds          | 328       | 627       | 1021      | 1373      | 1728      | 2096      | 2440      | 2873      | 3343      |     |     |     | -35.69%   |
| Ratio Sales/List   | 221.6%    | 198.0%    | 220.1%    | 106.0%    | 72.0%     | 49.6%     | 41.5%     | 44.5%     | 47.5%     |     |     |     |           |
| DOM Active         | 3         | 3         | 7         | 13        | 21        | 32        | 34        | 41        | 55        |     |     |     |           |
| DOM Solds          | 8         | 6         | 5         | 5         | 6         | 7         | 12        | 15        | 28        |     |     |     |           |
| Average Sale Price | \$408,843 | \$408,114 | \$409,357 | \$415,541 | \$408,216 | \$413,877 | \$418,621 | \$412,306 | \$407,348 |     |     |     | \$411,358 |
| Median Sales Price | \$419,450 | \$421,495 | \$417,000 | \$425,000 | \$410,000 | \$419,450 | \$420,000 | \$420,000 | \$411,995 |     |     |     | \$419,450 |

**Homes Over \$500,000– Utah and Juab Counties**

| 2017             | Jan   | Feb   | March | April | May   | June  | July  | August | Sept  | Oct   | Nov   | Dec   | Change |
|------------------|-------|-------|-------|-------|-------|-------|-------|--------|-------|-------|-------|-------|--------|
| Active           | 292   | 311   | 375   | 405   | 460   | 463   | 459   | 424    | 420   | 386   | 358   | 324   |        |
| Solds            | 37    | 38    | 36    | 48    | 62    | 68    | 59    | 83     | 69    | 66    | 46    | 49    |        |
| YTD Solds        | 37    | 75    | 111   | 159   | 221   | 289   | 348   | 431    | 500   | 566   | 612   | 661   |        |
| Ratio Sales/List | 12.7% | 12.2% | 9.6%  | 11.9% | 13.5% | 14.7% | 12.9% | 19.6%  | 16.4% | 17.1% | 12.8% | 15.1% |        |
| DOM Active       | 146   | 119   | 60    | 56    | 65    | 82    | 81    | 92     | 55    | 110   | 112   | 111   |        |
| DOM Solds        | 55    | 92    | 34    | 97    | 41    | 28    | 24    | 48     | 55    | 60    | 75    | 40    |        |

| 2018             | Jan   | Feb   | March | April | May   | June  | July  | August | Sept  | Oct   | Nov   | Dec   | Change |
|------------------|-------|-------|-------|-------|-------|-------|-------|--------|-------|-------|-------|-------|--------|
| Active           | 325   | 349   | 401   | 462   | 514   | 521   | 531   | 543    | 555   | 533   | 482   | 458   |        |
| Solds            | 40    | 65    | 48    | 70    | 87    | 110   | 90    | 106    | 71    | 67    | 68    | 82    |        |
| YTD Solds        | 40    | 105   | 153   | 223   | 310   | 420   | 510   | 616    | 687   | 754   | 822   | 904   | 36.76% |
| Ratio Sales/List | 12.3% | 18.6% | 12.0% | 15.2% | 16.9% | 21.1% | 16.9% | 19.5%  | 12.8% | 12.6% | 14.1% | 17.9% |        |
| DOM Active       | 108   | 76    | 56    | 55    | 54    | 63    | 77    | 78     | 87    | 94    | 101   | 115   |        |
| DOM Solds        | 82    | 49    | 62    | 40    | 33    | 34    | 38    | 39     | 35    | 55    | 64    | 48    |        |

| 2019             | Jan   | Feb  | March | April | May   | June  | July  | August | Sept  | Oct   | Nov   | Dec   | Change |
|------------------|-------|------|-------|-------|-------|-------|-------|--------|-------|-------|-------|-------|--------|
| Active           | 467   | 557  | 574   | 624   | 680   | 718   | 714   | 653    | 633   | 564   | 564   | 485   |        |
| Solds            | 51    | 52   | 91    | 101   | 152   | 122   | 141   | 132    | 113   | 136   | 97    | 97    |        |
| YTD Solds        | 51    | 103  | 194   | 295   | 447   | 569   | 710   | 842    | 955   | 1091  | 1188  | 1285  | 42.15% |
| Ratio Sales/List | 10.9% | 9.3% | 15.9% | 16.2% | 22.4% | 17.0% | 19.7% | 20.2%  | 17.9% | 24.1% | 17.2% | 20.0% |        |
| DOM Active       | 113   | 101  | 78    | 70    | 71    | 75    | 77    | 98     | 112   | 97    | 100   | 101   |        |
| DOM Solds        | 56    | 56   | 76    | 44    | 33    | 48    | 37    | 33     | 52    | 49    | 68    | 69    |        |

| 2020               | Jan       | Feb       | March     | April     | May       | June      | July      | August    | Sept      | Oct       | Nov       | Dec       | Change    |
|--------------------|-----------|-----------|-----------|-----------|-----------|-----------|-----------|-----------|-----------|-----------|-----------|-----------|-----------|
| Active             | 492       | 527       | 570       | 575       | 510       | 468       | 431       | 423       | 354       | 302       | 248       | 208       |           |
| Solds              | 69        | 89        | 145       | 110       | 115       | 207       | 213       | 218       | 241       | 217       | 217       | 234       |           |
| YTD Solds          | 69        | 158       | 303       | 413       | 528       | 735       | 948       | 1166      | 1407      | 1624      | 1841      | 2075      | 61.48%    |
| Ratio Sales/List   | 14.0%     | 16.9%     | 25.4%     | 19.1%     | 22.5%     | 44.2%     | 49.4%     | 51.5%     | 68.1%     | 71.9%     | 87.5%     | 112.5%    |           |
| DOM Active         | 95        | 90        | 72        | 64        | 70        | 72        | 57        | 51        | 62        | 63        | 92        | 95        |           |
| DOM Solds          | 86        | 85        | 51        | 25        | 24        | 36        | 39        | 30        | 27        | 21        | 25        | 24        |           |
| Average Sale Price | \$738,960 | \$738,212 | \$679,107 | \$675,976 | \$688,929 | \$659,507 | \$706,150 | \$741,366 | \$722,578 | \$724,637 | \$693,728 | \$721,528 | \$707,557 |
| Median Sales Price | \$629,900 | \$610,000 | \$590,419 | \$590,818 | \$615,000 | \$600,000 | \$615,000 | \$617,475 | \$625,000 | \$633,454 | \$612,000 | \$614,005 | \$614,503 |

**Homes Over \$500,000– Utah and Juab Counties**

| 2021               | Jan       | Feb       | March     | April     | May       | June      | July      | August    | Sept      | Oct       | Nov       | Dec       | Change    |
|--------------------|-----------|-----------|-----------|-----------|-----------|-----------|-----------|-----------|-----------|-----------|-----------|-----------|-----------|
| Active             | 151       | 168       | 272       | 320       | 434       | 517       | 527       | 513       | 489       | 420       | 331       | 278       |           |
| Solds              | 150       | 170       | 250       | 357       | 337       | 451       | 462       | 470       | 458       | 451       | 439       | 500       |           |
| YTD Solds          | 150       | 320       | 570       | 927       | 1264      | 1715      | 2177      | 2647      | 3105      | 3556      | 3995      | 4495      | 116.63%   |
| Ratio Sales/List   | 99.3%     | 101.2%    | 91.9%     | 111.6%    | 77.6%     | 87.2%     | 87.7%     | 91.6%     | 93.7%     | 107.4%    | 132.6%    | 179.9%    |           |
| DOM Active         | 34        | 19        | 17        | 18        | 17        | 19        | 22        | 31        | 32        | 33        | 46        | 39        |           |
| DOM Solds          | 10        | 15        | 6         | 6         | 7         | 7         | 8         | 8         | 10        | 11        | 11        | 12        |           |
| Average Sale Price | \$722,643 | \$716,141 | \$718,672 | \$753,295 | \$707,464 | \$729,286 | \$714,986 | \$701,352 | \$693,682 | \$717,374 | \$723,889 | \$713,625 | \$717,701 |
| Median Sales Price | \$625,735 | \$630,950 | \$608,653 | \$615,000 | \$602,500 | \$624,450 | \$623,676 | \$612,000 | \$603,550 | \$625,500 | \$625,800 | \$617,100 | \$620,388 |

| 2022               | Jan       | Feb       | March     | April     | May       | June      | July      | August    | Sept      | Oct | Nov | Dec | Change    |
|--------------------|-----------|-----------|-----------|-----------|-----------|-----------|-----------|-----------|-----------|-----|-----|-----|-----------|
| Active             | 331       | 388       | 563       | 982       | 1,478     | 1,565     | 1,543     | 1,545     | 1,517     |     |     |     |           |
| Solds              | 327       | 380       | 603       | 599       | 642       | 612       | 486       | 509       | 460       |     |     |     |           |
| YTD Solds          | 327       | 707       | 1310      | 1909      | 2551      | 3163      | 3649      | 4158      | 4618      |     |     |     | 48.73%    |
| Ratio Sales/List   | 98.8%     | 97.9%     | 107.1%    | 61.0%     | 43.4%     | 39.1%     | 31.5%     | 32.9%     | 30.3%     |     |     |     |           |
| DOM Active         | 15        | 14        | 18        | 19        | 26        | 41        | 50        | 55        | 61        |     |     |     |           |
| DOM Solds          | 10        | 6         | 6         | 6         | 7         | 11        | 17        | 20        | 29        |     |     |     |           |
| Average Sale Price | \$718,611 | \$710,238 | \$708,195 | \$721,906 | \$723,838 | \$725,437 | \$748,188 | \$728,118 | \$727,287 |     |     |     | \$723,535 |
| Median Sales Price | \$617,500 | \$616,979 | \$616,541 | \$635,000 | \$635,000 | \$641,613 | \$669,828 | \$649,990 | \$651,895 |     |     |     | \$635,000 |

**Homes Over \$1,000,000– Utah and Juab Counties**

| 2017             | Jan  | Feb  | March | April | May  | June | July | August | Sept | Oct   | Nov  | Dec  | Change |
|------------------|------|------|-------|-------|------|------|------|--------|------|-------|------|------|--------|
| Active           | 71   | 78   | 89    | 94    | 102  | 97   | 97   | 95     | 96   | 85    | 78   | 74   |        |
| Solds            | 2    | 4    | 3     | 4     | 4    | 3    | 3    | 8      | 5    | 9     | 4    | 2    |        |
| YTD Solds        | 2    | 6    | 9     | 13    | 17   | 20   | 23   | 31     | 36   | 45    | 49   | 51   |        |
| Ratio Sales/List | 2.8% | 5.1% | 3.4%  | 4.3%  | 3.9% | 3.1% | 3.1% | 8.4%   | 5.2% | 10.6% | 5.1% | 2.7% |        |
| DOM Active       | 173  | 176  | 161   | 121   | 102  | 131  | 113  | 144    | 126  | 174   | 191  | 183  |        |
| DOM Solds        | 184  | 137  | 33    | 19    | 17   | 301  | 29   | 79     | 166  | 61    | 323  | 109  |        |

| 2018             | Jan  | Feb  | March | April | May  | June | July | August | Sept | Oct  | Nov  | Dec  | Change |
|------------------|------|------|-------|-------|------|------|------|--------|------|------|------|------|--------|
| Active           | 69   | 74   | 85    | 95    | 101  | 104  | 116  | 106    | 108  | 99   | 97   | 88   |        |
| Solds            | 3    | 3    | 1     | 4     | 8    | 7    | 3    | 13     | 6    | 8    | 4    | 4    |        |
| YTD Solds        | 3    | 6    | 7     | 11    | 19   | 26   | 29   | 42     | 48   | 56   | 60   | 64   | 25.49% |
| Ratio Sales/List | 4.3% | 4.1% | 1.2%  | 4.2%  | 7.9% | 6.7% | 2.6% | 12.3%  | 5.6% | 8.1% | 4.1% | 4.5% |        |
| DOM Active       | 211  | 195  | 180   | 133   | 109  | 96   | 116  | 127    | 139  | 167  | 171  | 184  |        |
| DOM Solds        | 246  | 37   | 374   | 337   | 133  | 25   | 52   | 50     | 88   | 77   | 236  | 184  |        |

| 2019             | Jan  | Feb  | March | April | May  | June | July | August | Sept | Oct  | Nov   | Dec   | Change |
|------------------|------|------|-------|-------|------|------|------|--------|------|------|-------|-------|--------|
| Active           | 86   | 100  | 101   | 115   | 138  | 139  | 134  | 130    | 116  | 104  | 93    | 79    |        |
| Solds            | 2    | 0    | 9     | 8     | 6    | 10   | 10   | 8      | 9    | 8    | 11    | 8     |        |
| YTD Solds        | 2    | 2    | 11    | 19    | 25   | 35   | 45   | 53     | 62   | 70   | 81    | 89    | 39.06% |
| Ratio Sales/List | 2.3% | 0.0% | 8.9%  | 7.0%  | 4.3% | 7.2% | 7.5% | 6.2%   | 7.8% | 7.7% | 11.8% | 10.1% |        |
| DOM Active       | 193  | 166  | 156   | 98    | 94   | 105  | 110  | 109    | 138  | 155  | 189   | 181   |        |
| DOM Solds        | 8    | 0    | 269   | 278   | 91   | 129  | 119  | 46     | 120  | 67   | 70    | 153   |        |

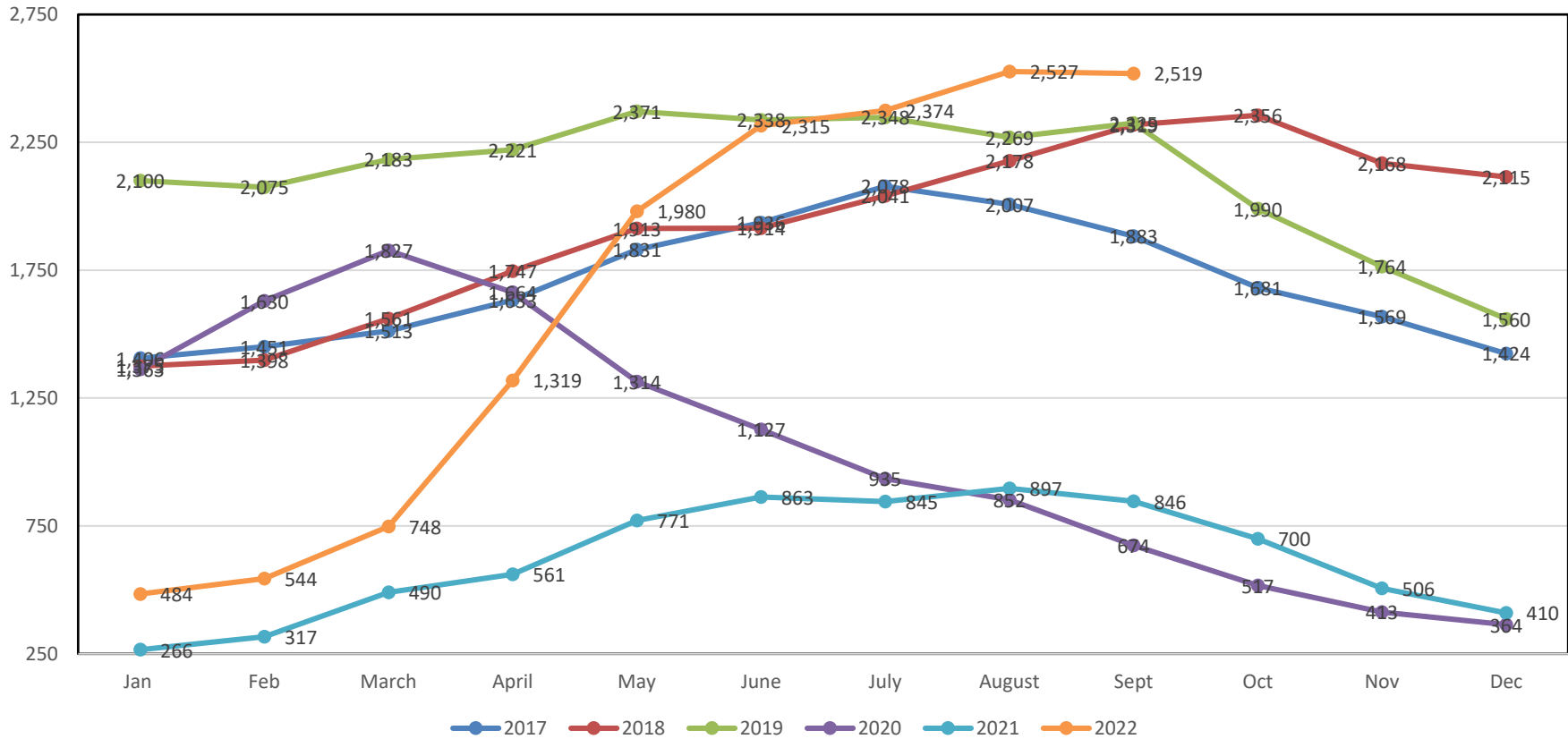
| 2020               | Jan         | Feb         | March       | April       | May         | June        | July        | August      | Sept        | Oct         | Nov         | Dec         | Change      |
|--------------------|-------------|-------------|-------------|-------------|-------------|-------------|-------------|-------------|-------------|-------------|-------------|-------------|-------------|
| Active             | 89          | 96          | 97          | 111         | 113         | 107         | 102         | 93          | 81          | 74          | 64          | 53          |             |
| Solds              | 7           | 8           | 7           | 6           | 9           | 9           | 17          | 22          | 27          | 27          | 15          | 22          |             |
| YTD Solds          | 7           | 15          | 22          | 28          | 37          | 46          | 63          | 85          | 112         | 139         | 154         | 176         | 97.75%      |
| Ratio Sales/List   | 7.9%        | 8.3%        | 7.2%        | 5.4%        | 8.0%        | 8.4%        | 16.7%       | 23.7%       | 33.3%       | 36.5%       | 23.4%       | 41.5%       |             |
| DOM Active         | 188         | 184         | 180         | 105         | 107         | 112         | 103         | 80          | 108         | 83          | 135         | 125         |             |
| DOM Solds          | 96          | 204         | 71          | 23          | 32          | 247         | 85          | 153         | 70          | 100         | 84          | 66          |             |
| Average Sale Price | \$1,665,993 | \$1,886,500 | \$1,901,500 | \$1,772,241 | \$1,330,813 | \$1,365,592 | \$1,497,705 | \$1,736,608 | \$1,406,040 | \$1,322,228 | \$1,509,730 | \$1,495,284 | \$1,574,186 |
| Median Sales Price | \$1,125,000 | \$1,349,250 | \$1,261,000 | \$1,607,500 | \$1,223,924 | \$1,235,000 | \$1,270,000 | \$1,397,500 | \$1,200,000 | \$1,100,000 | \$1,295,000 | \$1,287,500 | \$1,265,500 |

**Homes Over \$1,000,000– Utah and Juab Counties**

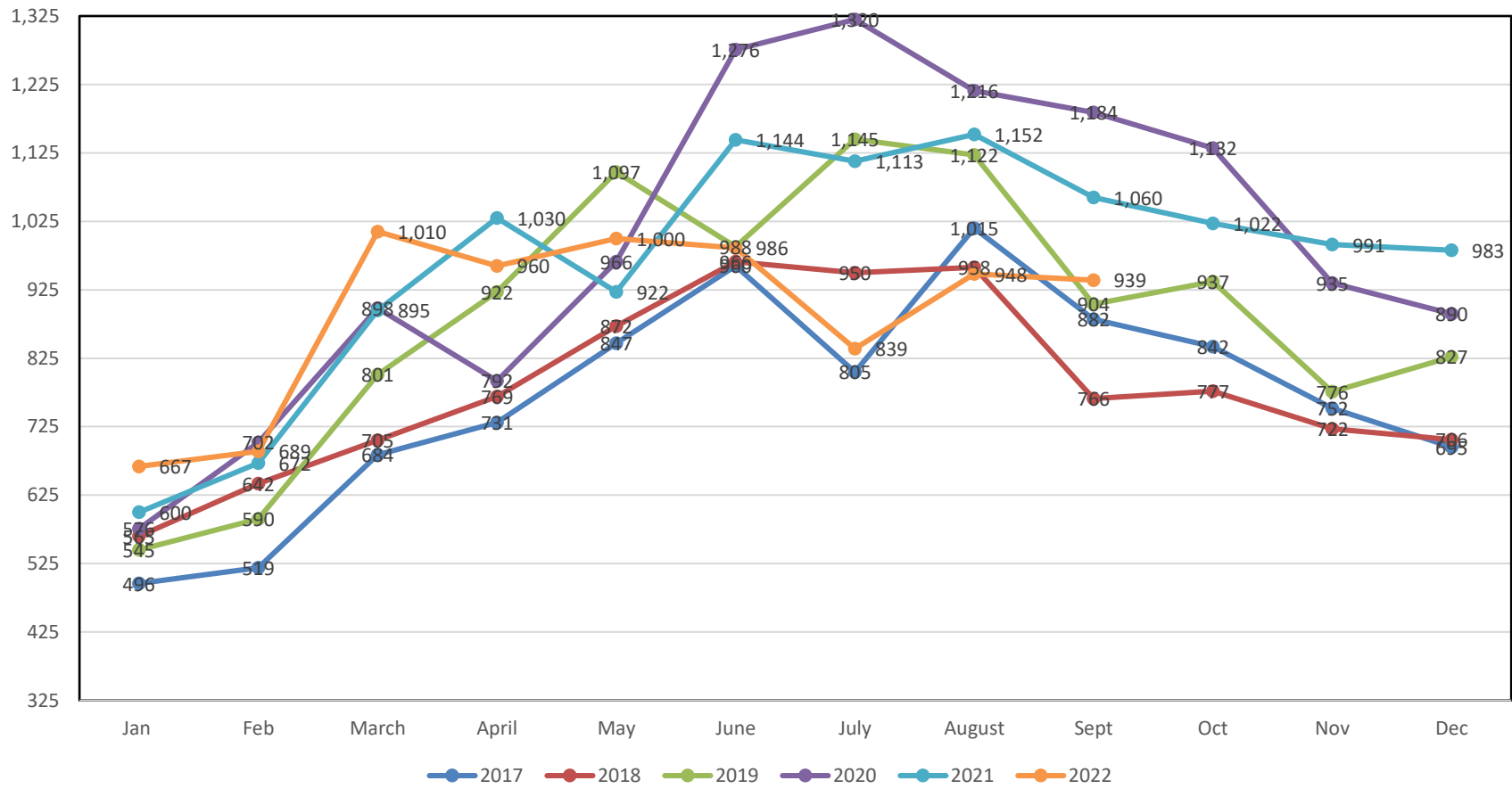
| 2021               | Jan         | Feb         | March       | April       | May         | June        | July        | August      | Sept        | Oct         | Nov         | Dec         | Change      |
|--------------------|-------------|-------------|-------------|-------------|-------------|-------------|-------------|-------------|-------------|-------------|-------------|-------------|-------------|
| Active             | 48          | 52          | 75          | 84          | 107         | 101         | 120         | 115         | 111         | 99          | 93          | 88          |             |
| Solds              | 15          | 13          | 27          | 42          | 25          | 45          | 47          | 36          | 36          | 38          | 32          | 44          |             |
| YTD Solds          | 15          | 28          | 55          | 97          | 122         | 167         | 214         | 250         | 286         | 324         | 356         | 400         | 127.27%     |
| Ratio Sales/List   | 31.3%       | 25.0%       | 36.0%       | 50.0%       | 23.4%       | 44.6%       | 39.2%       | 31.3%       | 32.4%       | 38.4%       | 34.4%       | 50.0%       |             |
| DOM Active         | 115         | 47          | 27          | 31          | 36          | 47          | 48          | 58          | 68          | 68          | 88          | 82          |             |
| DOM Solds          | 91          | 74          | 23          | 13          | 17          | 15          | 14          | 17          | 13          | 43          | 9           | 43          |             |
| Average Sale Price | \$1,408,733 | \$1,604,769 | \$1,452,473 | \$1,681,501 | \$1,667,730 | \$1,523,636 | \$1,420,391 | \$1,489,723 | \$1,432,649 | \$1,599,154 | \$1,690,695 | \$1,494,631 | \$1,538,840 |
| Median Sales Price | \$1,250,000 | \$1,200,000 | \$1,370,000 | \$1,370,000 | \$1,500,000 | \$1,360,000 | \$1,275,000 | \$1,255,500 | \$1,245,000 | \$1,336,250 | \$1,304,000 | \$1,320,000 | \$1,312,000 |

| 2022               | Jan         | Feb         | March       | April       | May         | June        | July        | August      | Sept        | Oct | Nov | Dec | Change      |
|--------------------|-------------|-------------|-------------|-------------|-------------|-------------|-------------|-------------|-------------|-----|-----|-----|-------------|
| Active             | 112         | 119         | 170         | 213         | 292         | 291         | 287         | 286         | 296         |     |     |     |             |
| Solds              | 28          | 22          | 47          | 58          | 69          | 61          | 54          | 56          | 44          |     |     |     |             |
| YTD Solds          | 28          | 50          | 97          | 155         | 224         | 285         | 339         | 395         | 439         |     |     |     | 53.50%      |
| Ratio Sales/List   | 25.0%       | 18.5%       | 27.6%       | 27.2%       | 23.6%       | 21.0%       | 18.8%       | 19.6%       | 14.9%       |     |     |     |             |
| DOM Active         | 51          | 45          | 38          | 36          | 39          | 49          | 66          | 87          | 90          |     |     |     |             |
| DOM Solds          | 34          | 9           | 6           | 7           | 9           | 20          | 19          | 24          | 27          |     |     |     |             |
| Average Sale Price | \$1,599,283 | \$1,757,717 | \$1,525,605 | \$1,399,378 | \$1,384,237 | \$1,409,797 | \$1,406,106 | \$1,340,842 | \$1,371,357 |     |     |     | \$1,466,036 |
| Median Sales Price | \$1,282,250 | \$1,380,000 | \$1,250,000 | \$1,195,097 | \$1,225,000 | \$1,289,500 | \$1,199,500 | \$1,242,500 | \$1,215,832 |     |     |     | \$1,242,500 |

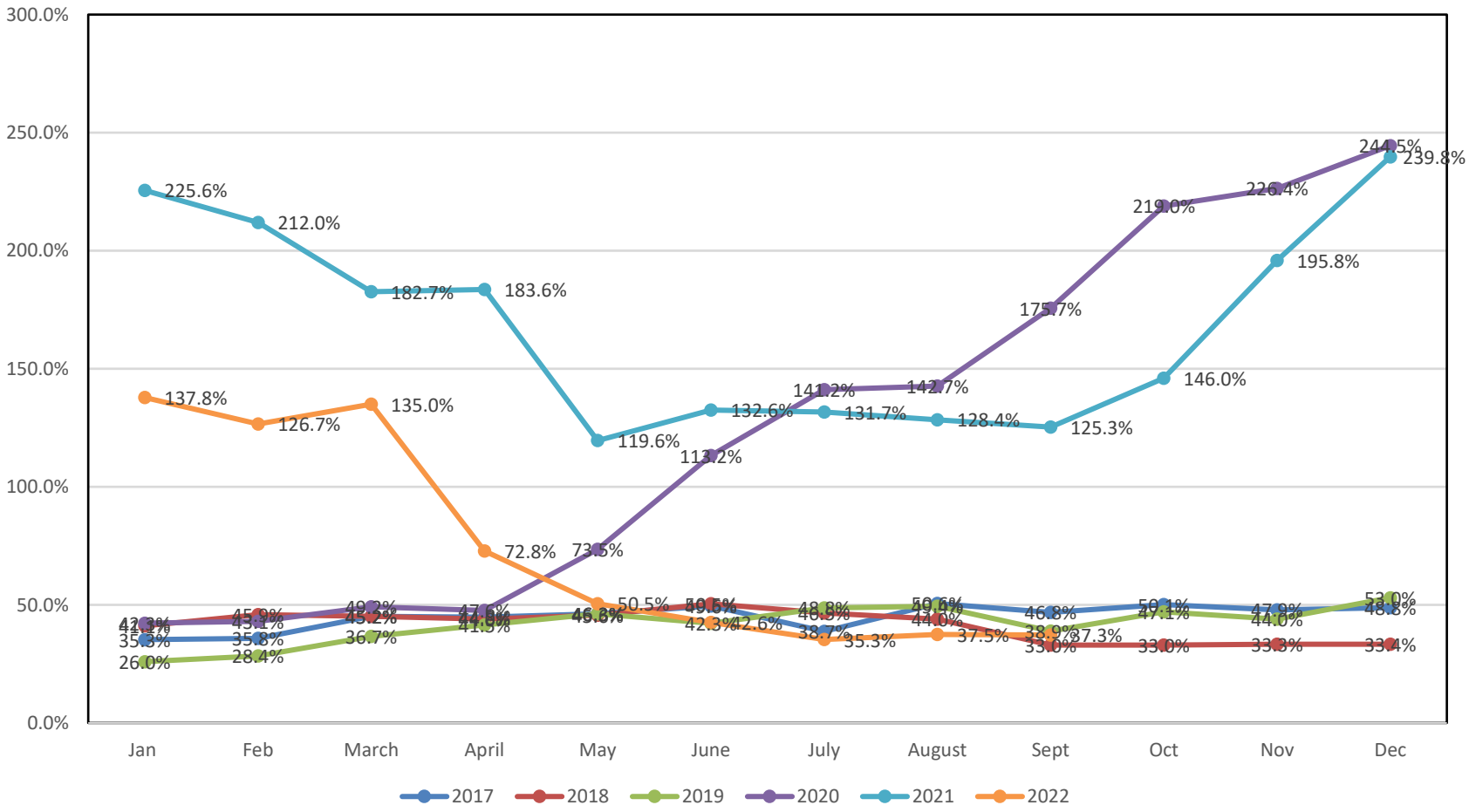
All Active Listings 2017-2022



All Units Sold 2017- 2022

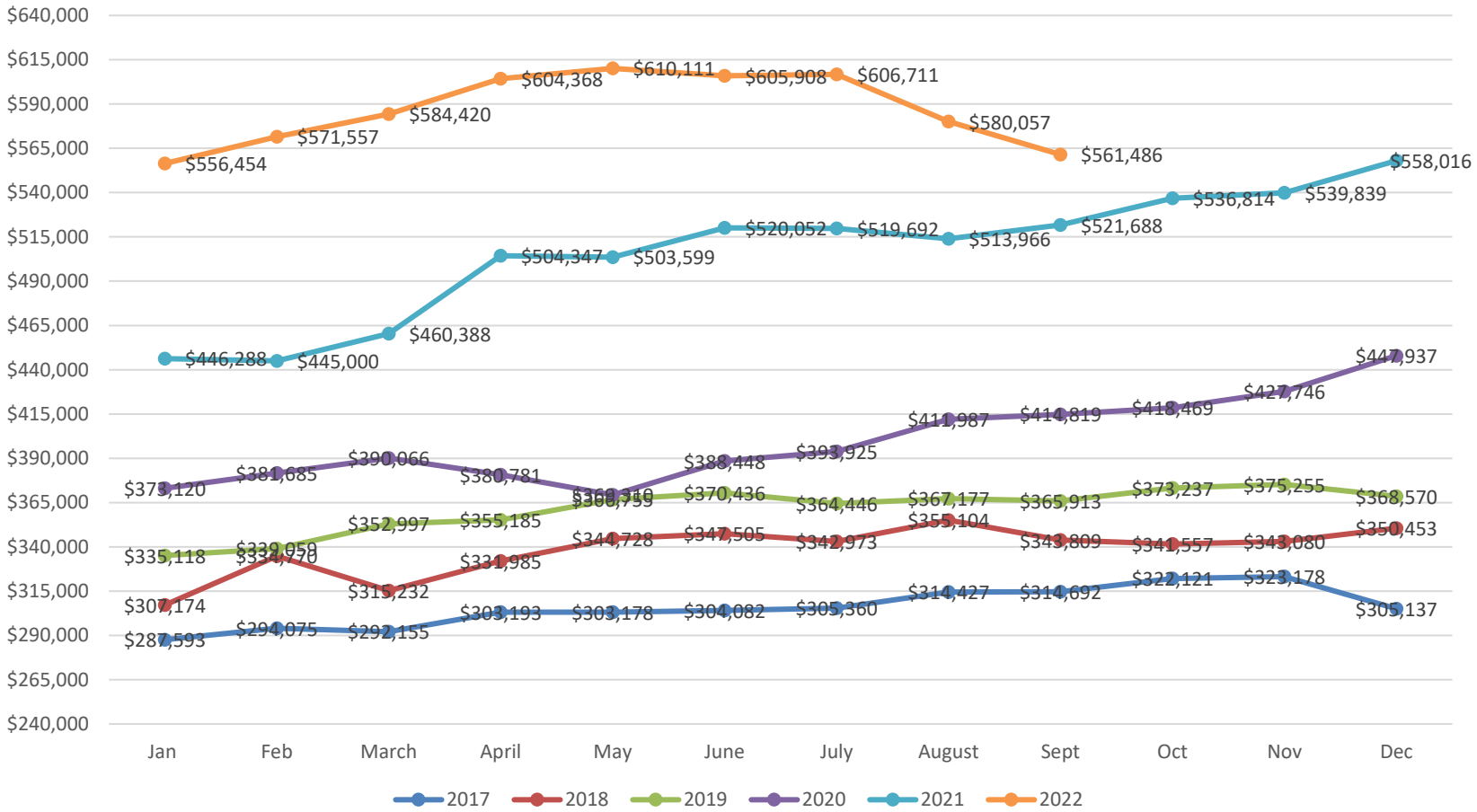


Percentage Ratio of Sold vs. Active

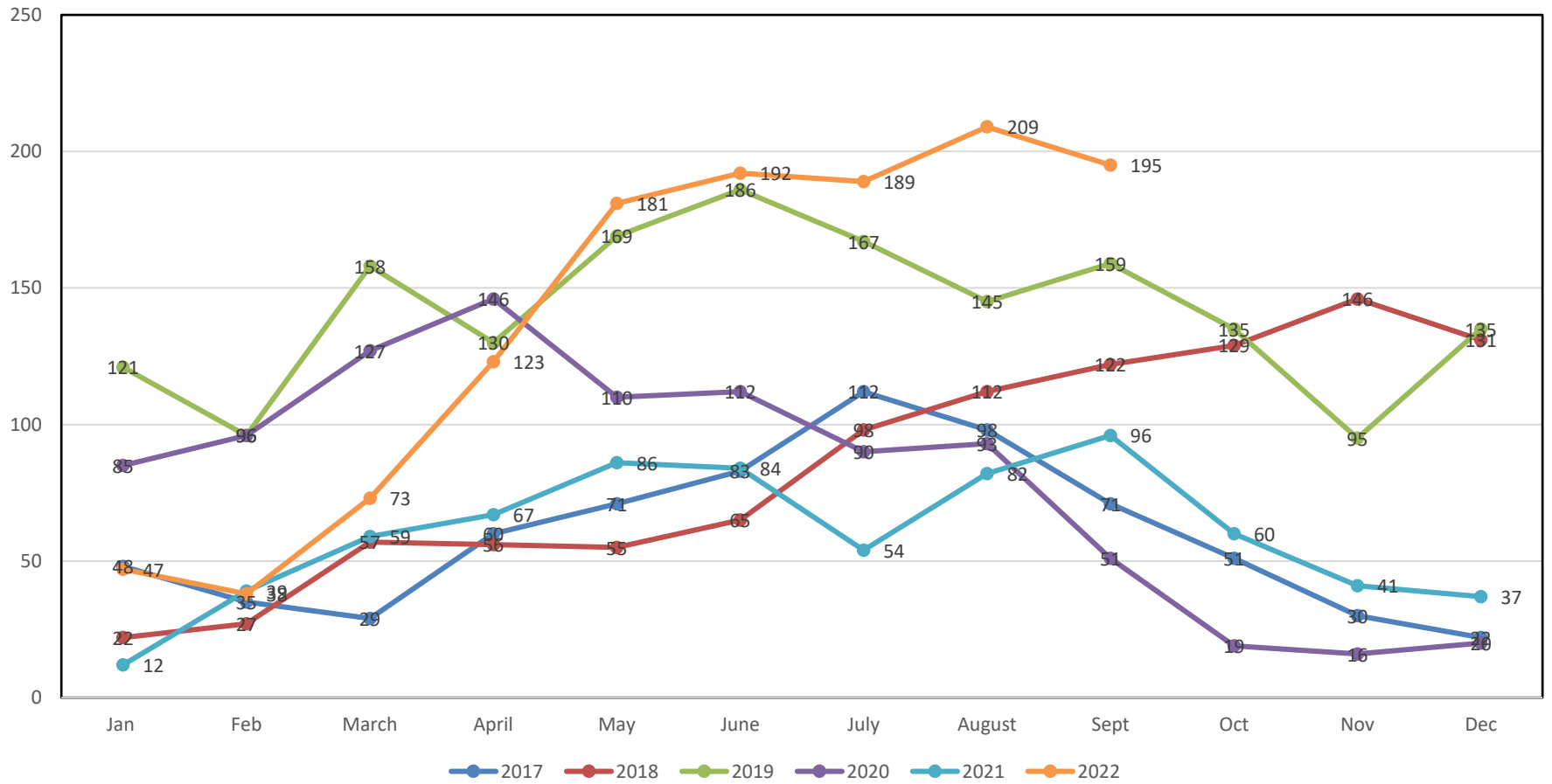




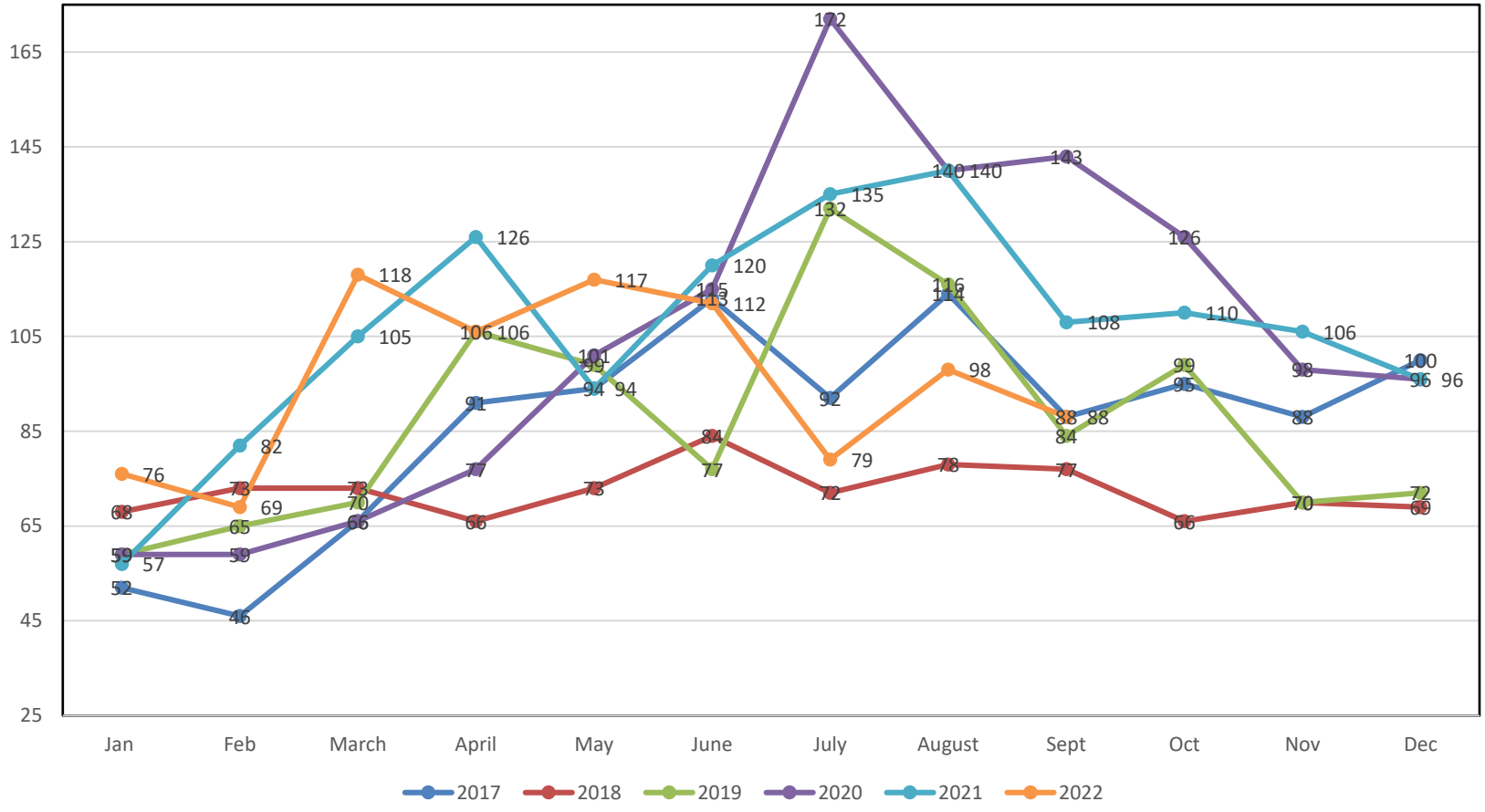
### Average Sale Price 2017-2022



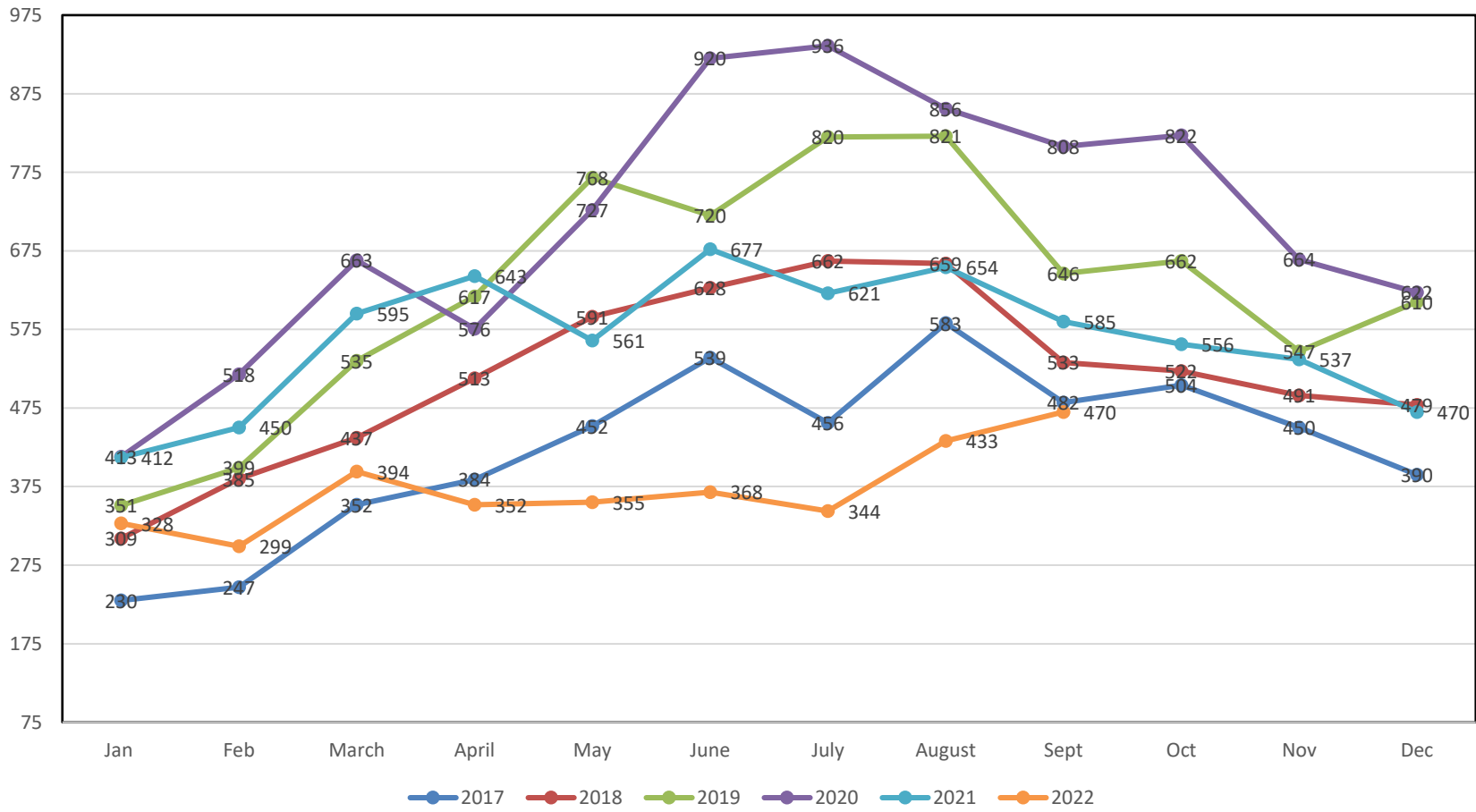
Active Condo Listings 2017-2022



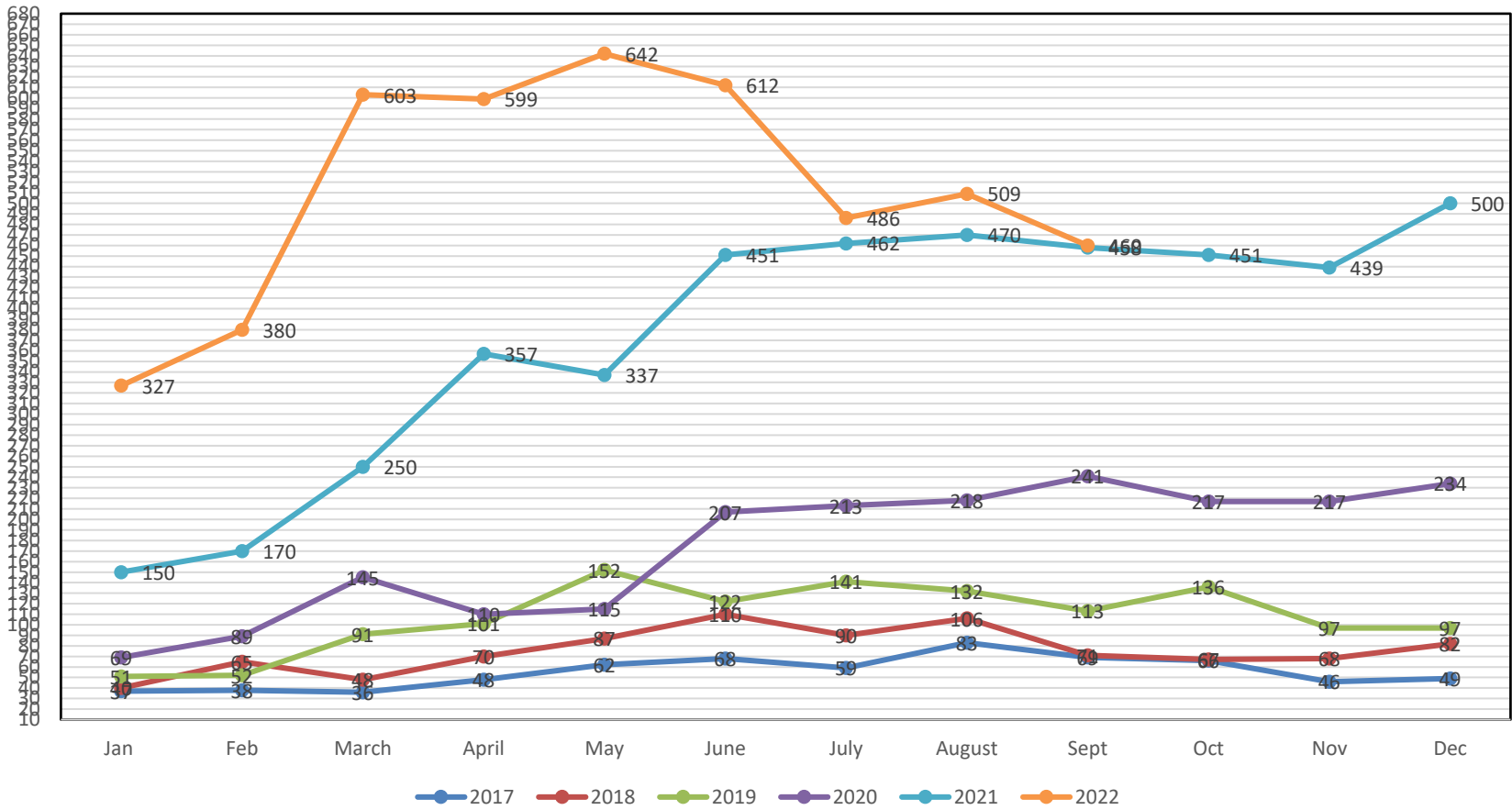
Condo's Sold 2017-2022



Properties sold for \$250,000-\$499,999 2017-2022



Properties sold for \$500,000 or more 2017-2022



Days on Market- Single Family Solds 2017-2022

