

UTAH CENTRAL ASSOCIATION of REALTORS®
Monthly Statistics

To: Brokers and Agents
From: The Utah Central Association of REALTORS®
Subject: Monthly Statistics: April 2026

All data is from UtahRealEstate.com
Data does not include transactions in which a REALTOR® was not involved.



| All Residential Types -- Utah and Juab Counties | | | | | | | | | | | | | |
|---|-------------|-------------|-----------|-----------|-----------|-----------|-----------|-----------|-----------|-----------|-------------|-------------|-----------|
| 2021 | Jan | Feb | March | April | May | June | July | August | Sept | Oct | Nov | Dec | Change |
| Active | 266 | 317 | 490 | 561 | 771 | 863 | 845 | 897 | 846 | 700 | 506 | 410 | |
| Solds | 600 | 672 | 895 | 1,030 | 922 | 1,144 | 1,113 | 1,152 | 1,060 | 1,022 | 991 | 983 | |
| YTD Solds | 600 | 1272 | 2167 | 3197 | 4119 | 5263 | 6376 | 7528 | 8588 | 9610 | 10601 | 11584 | |
| Ratio Sales/List | 225.6% | 212.0% | 182.7% | 183.6% | 119.6% | 132.6% | 131.7% | 128.4% | 125.3% | 146.0% | 195.8% | 239.8% | |
| DOM Active | 16 | 8 | 10 | 13 | 13 | 16 | 20 | 22 | 25 | 24 | 46 | 24 | |
| DOM Solds | 6 | 5 | 5 | 5 | 6 | 6 | 6 | 7 | 8 | 10 | 10 | 9 | |
| Average Sale Price | \$446,288 | \$445,000 | \$460,388 | \$504,347 | \$503,599 | \$520,052 | \$519,692 | \$513,966 | \$521,688 | \$536,814 | \$539,839 | \$558,016 | \$505,807 |
| Average Active Price | \$1,210,379 | \$1,124,109 | \$998,781 | \$935,990 | \$870,047 | \$824,520 | \$865,560 | \$822,821 | \$837,600 | \$911,400 | \$1,069,015 | \$1,164,340 | |
| Median Sales Price | \$392,900 | \$394,950 | \$405,000 | \$438,950 | \$450,000 | \$459,387 | \$460,000 | \$462,135 | \$473,041 | \$479,950 | \$478,510 | \$500,000 | \$459,694 |
| Median Active Price | \$535,000 | \$530,213 | \$541,650 | \$554,900 | \$539,999 | \$559,900 | \$565,000 | \$537,825 | \$538,500 | \$549,975 | \$599,985 | \$646,855 | |

| 2022 | Jan | Feb | March | April | May | June | July | August | Sept | Oct | Nov | Dec | Change |
|----------------------|-------------|-------------|-------------|-----------|-----------|-----------|-----------|-----------|-----------|-----------|-----------|-----------|-----------|
| Active | 484 | 544 | 748 | 1,319 | 1,980 | 2,315 | 2,374 | 2,527 | 2,519 | 2,238 | 2,038 | 1,730 | |
| Solds | 671 | 695 | 1,019 | 972 | 1,004 | 1,001 | 857 | 963 | 975 | 609 | 575 | 667 | |
| YTD Solds | 671 | 1366 | 2385 | 3357 | 4361 | 5362 | 6219 | 7182 | 8157 | 8766 | 9341 | 10008 | -13.60% |
| Ratio Sales/List | 138.6% | 127.8% | 136.2% | 73.7% | 50.7% | 43.2% | 36.1% | 38.1% | 38.7% | 27.2% | 28.2% | 38.6% | |
| DOM Active | 8 | 10 | 13 | 15 | 24 | 38 | 43 | 48 | 57 | 75 | 88 | 92 | |
| DOM Solds | 8 | 6 | 6 | 6 | 6 | 9 | 14 | 18 | 27 | 34 | 40 | 42 | |
| Average Sale Price | \$556,537 | \$571,149 | \$583,562 | \$603,642 | \$609,910 | \$607,186 | \$606,550 | \$580,016 | \$561,306 | \$568,773 | \$558,694 | \$587,520 | \$582,904 |
| Average Active Price | \$1,131,648 | \$1,096,626 | \$1,045,347 | \$890,417 | \$838,198 | \$783,895 | \$776,243 | \$750,947 | \$756,973 | \$750,648 | \$746,229 | \$773,301 | |
| Median Sales Price | \$495,000 | \$520,000 | \$531,000 | \$545,500 | \$545,250 | \$535,000 | \$532,000 | \$514,000 | \$495,000 | \$506,427 | \$492,500 | \$499,900 | \$517,000 |
| Median Active Price | \$631,227 | \$639,900 | \$668,250 | \$634,900 | \$615,000 | \$594,000 | \$575,000 | \$559,900 | \$555,000 | \$558,945 | \$557,940 | \$562,392 | |

| 2023 | Jan | Feb | March | April | May | June | July | August | Sept | Oct | Nov | Dec | Change |
|----------------------|-----------|-----------|-----------|-----------|-----------|-----------|-----------|-----------|-----------|-----------|-----------|-----------|-----------|
| Active | 1,599 | 1,493 | 1,459 | 1,603 | 1,668 | 1,741 | 1,870 | 2,028 | 2,010 | 1,940 | 1,664 | 1,525 | |
| Solds | 509 | 714 | 873 | 799 | 804 | 806 | 703 | 775 | 665 | 615 | 538 | 607 | |
| YTD Solds | 509 | 1223 | 2096 | 2895 | 3699 | 4505 | 5208 | 5983 | 6648 | 7263 | 7801 | 8408 | -15.99% |
| Ratio Sales/List | 31.8% | 47.8% | 59.8% | 49.8% | 48.2% | 46.3% | 37.6% | 38.2% | 33.1% | 31.7% | 32.3% | 39.8% | |
| DOM Active | 74 | 55 | 50 | 41 | 40 | 44 | 41 | 43 | 55 | 61 | 69 | 65 | |
| DOM Solds | 50 | 48 | 30 | 29 | 24 | 21 | 22 | 29 | 29 | 32 | 32 | 36 | |
| Average Sale Price | \$560,088 | \$529,863 | \$537,745 | \$551,534 | \$581,987 | \$570,135 | \$583,909 | \$598,546 | \$563,837 | \$551,190 | \$547,294 | \$532,760 | \$559,074 |
| Average Active Price | \$806,093 | \$825,523 | \$840,177 | \$847,821 | \$881,525 | \$871,221 | \$831,308 | \$816,670 | \$819,134 | \$827,192 | \$846,882 | \$819,960 | |
| Median Sales Price | \$470,000 | \$465,500 | \$475,000 | \$470,000 | \$485,175 | \$495,000 | \$500,000 | \$496,000 | \$490,000 | \$475,000 | \$485,000 | \$475,000 | \$480,000 |
| Median Active Price | \$575,899 | \$589,900 | \$599,900 | \$614,900 | \$610,000 | \$609,990 | \$587,950 | \$574,900 | \$574,900 | \$574,900 | \$575,495 | \$579,900 | |

| Residential-Single Family -- Utah and Juab Counties | | | | | | | | | | | | | |
|---|-------------|-------------|-------------|-------------|-------------|-----------|-----------|-----------|-------------|-------------|-------------|-------------|-----------|
| 2021 | Jan | Feb | March | April | May | June | July | August | Sept | Oct | Nov | Dec | Change |
| Active | 227 | 231 | 360 | 401 | 562 | 653 | 674 | 676 | 603 | 536 | 397 | 295 | |
| Solds | 428 | 459 | 588 | 705 | 671 | 799 | 755 | 781 | 727 | 702 | 665 | 694 | |
| YTD Solds | 428 | 887 | 1475 | 2180 | 2851 | 3650 | 4405 | 5186 | 5913 | 6615 | 7280 | 7974 | |
| Ratio Sales/List | 188.5% | 198.7% | 163.3% | 175.8% | 119.4% | 122.4% | 112.0% | 115.5% | 120.6% | 131.0% | 167.5% | 235.3% | |
| DOM Active | 19 | 10 | 11 | 13 | 14 | 18 | 20 | 26 | 29 | 23 | 45 | 40 | |
| DOM Solds | 6 | 6 | 5 | 5 | 6 | 6 | 7 | 8 | 9 | 11 | 10 | 11 | |
| Average Sale Price | \$502,339 | \$510,883 | \$534,952 | \$585,072 | \$563,633 | \$593,337 | \$598,645 | \$586,659 | \$592,805 | \$608,246 | \$617,434 | \$628,728 | \$576,894 |
| Average Active Price | \$1,351,582 | \$1,397,126 | \$1,218,700 | \$1,149,503 | \$1,043,729 | \$959,195 | \$981,669 | \$964,650 | \$1,018,221 | \$1,064,747 | \$1,249,329 | \$1,453,982 | |
| Median Sales Price | \$436,198 | \$455,000 | \$466,163 | \$500,000 | \$497,500 | \$519,000 | \$525,000 | \$525,000 | \$529,181 | \$538,790 | \$550,000 | \$560,000 | \$522,000 |
| Median Active Price | \$559,900 | \$599,999 | \$620,475 | \$637,950 | \$635,900 | \$635,900 | \$627,800 | \$604,970 | \$615,000 | \$614,950 | \$686,960 | \$750,000 | |

| 2022 | Jan | Feb | March | April | May | June | July | August | Sept | Oct | Nov | Dec | Change |
|----------------------|-------------|-------------|-------------|-------------|-----------|-----------|-----------|-----------|-----------|-----------|-----------|-----------|-----------|
| Active | 340 | 388 | 559 | 953 | 1,435 | 1,662 | 1,690 | 1,738 | 1,740 | 1,535 | 1,400 | 1,198 | |
| Solds | 452 | 455 | 686 | 671 | 678 | 690 | 562 | 626 | 608 | 416 | 380 | 444 | |
| YTD Solds | 452 | 907 | 1593 | 2264 | 2942 | 3632 | 4194 | 4820 | 5428 | 5844 | 6224 | 6668 | -16.38% |
| Ratio Sales/List | 132.9% | 117.3% | 122.7% | 70.4% | 47.2% | 41.5% | 33.3% | 36.0% | 34.9% | 27.1% | 27.1% | 37.1% | |
| DOM Active | 14 | 15 | 18 | 19 | 24 | 39 | 48 | 54 | 58 | 75 | 88 | 91 | |
| DOM Solds | 10 | 6 | 6 | 6 | 6 | 9 | 16 | 21 | 33 | 38 | 41 | 43 | |
| Average Sale Price | \$633,939 | \$656,934 | \$666,436 | \$683,088 | \$696,965 | \$690,649 | \$702,593 | \$666,708 | \$657,168 | \$648,018 | \$644,742 | \$683,321 | \$669,213 |
| Average Active Price | \$1,423,794 | \$1,354,197 | \$1,241,332 | \$1,052,693 | \$982,176 | \$919,458 | \$912,751 | \$896,160 | \$903,322 | \$892,612 | \$885,557 | \$916,937 | |
| Median Sales Price | \$560,000 | \$591,000 | \$595,300 | \$617,500 | \$627,725 | \$615,000 | \$635,000 | \$595,000 | \$599,200 | \$580,000 | \$572,000 | \$590,000 | \$595,150 |
| Median Active Price | \$799,200 | \$792,500 | \$773,500 | \$735,000 | \$709,400 | \$677,995 | \$659,900 | \$659,000 | \$659,900 | \$650,000 | \$649,000 | \$649,990 | |

| 2023 | Jan | Feb | March | April | May | June | July | August | Sept | Oct | Nov | Dec | Change |
|----------------------|-----------|-----------|-----------|-----------|-------------|-------------|-----------|-----------|-----------|-----------|-------------|-----------|-----------|
| Active | 1,120 | 1,051 | 1,077 | 1,207 | 1,241 | 1,308 | 1,342 | 1,438 | 1,435 | 1,399 | 1,165 | 1,047 | |
| Solds | 309 | 429 | 525 | 472 | 497 | 504 | 455 | 480 | 407 | 377 | 345 | 371 | |
| YTD Solds | 309 | 738 | 1263 | 1735 | 2232 | 2736 | 3191 | 3671 | 4078 | 4455 | 4800 | 5171 | -22.45% |
| Ratio Sales/List | 27.6% | 40.8% | 48.7% | 39.1% | 40.0% | 38.5% | 33.9% | 33.4% | 28.4% | 26.9% | 29.6% | 35.4% | |
| DOM Active | 73 | 61 | 55 | 43 | 44 | 49 | 48 | 49 | 59 | 61 | 70 | 71 | |
| DOM Solds | 54 | 49 | 34 | 33 | 25 | 24 | 25 | 31 | 35 | 36 | 37 | 40 | |
| Average Sale Price | \$666,558 | \$628,149 | \$643,749 | \$656,884 | \$699,264 | \$673,525 | \$690,541 | \$718,096 | \$664,904 | \$647,245 | \$630,285 | \$623,594 | \$661,900 |
| Average Active Price | \$951,555 | \$976,137 | \$968,169 | \$969,554 | \$1,026,734 | \$1,009,827 | \$979,968 | \$968,561 | \$968,898 | \$974,689 | \$1,017,017 | \$990,951 | |
| Median Sales Price | \$570,000 | \$575,000 | \$574,990 | \$577,250 | \$584,800 | \$590,000 | \$585,000 | \$590,750 | \$585,000 | \$570,000 | \$571,044 | \$554,673 | \$576,125 |
| Median Active Price | \$674,900 | \$669,990 | \$669,900 | \$679,900 | \$694,000 | \$699,990 | \$679,900 | \$684,950 | \$675,000 | \$669,900 | \$674,990 | \$684,900 | |

Homes From \$250,000-\$499,999– Utah and Juab Counties

| 2021 | Jan | Feb | March | April | May | June | July | August | Sept | Oct | Nov | Dec | Change |
|--------------------|-----------|-----------|-----------|-----------|-----------|-----------|-----------|-----------|-----------|-----------|-----------|-----------|-----------|
| Active | 105 | 138 | 211 | 229 | 328 | 333 | 304 | 372 | 345 | 273 | 167 | 125 | |
| Solds | 412 | 450 | 595 | 643 | 561 | 677 | 621 | 654 | 585 | 556 | 537 | 470 | |
| YTD Solds | 412 | 862 | 1457 | 2100 | 2661 | 3338 | 3959 | 4613 | 5198 | 5754 | 6291 | 6761 | |
| Ratio Sales/List | 392.4% | 326.1% | 282.0% | 280.8% | 171.0% | 203.3% | 204.3% | 175.8% | 169.6% | 203.7% | 321.6% | 376.0% | |
| DOM Active | 6 | 3 | 5 | 7 | 9 | 12 | 13 | 15 | 13 | 16 | 45 | 6 | |
| DOM Solds | 5 | 5 | 4 | 5 | 5 | 5 | 6 | 7 | 7 | 9 | 9 | 8 | |
| Average Sale Price | \$367,004 | \$368,614 | \$372,834 | \$380,052 | \$394,512 | \$388,252 | \$389,602 | \$392,716 | \$396,789 | \$400,585 | \$399,145 | \$403,209 | \$387,776 |
| Median Sales Price | \$365,000 | \$367,750 | \$375,000 | \$381,000 | \$405,000 | \$400,000 | \$400,000 | \$395,500 | \$405,000 | \$405,750 | \$407,000 | \$410,000 | \$400,000 |

| 2022 | Jan | Feb | March | April | May | June | July | August | Sept | Oct | Nov | Dec | Change |
|--------------------|-----------|-----------|-----------|-----------|-----------|-----------|-----------|-----------|-----------|-----------|-----------|-----------|-----------|
| Active | 148 | 151 | 179 | 332 | 493 | 742 | 829 | 973 | 990 | 896 | 801 | 645 | |
| Solds | 329 | 302 | 399 | 358 | 356 | 378 | 352 | 441 | 488 | 285 | 289 | 333 | |
| YTD Solds | 329 | 631 | 1030 | 1388 | 1744 | 2122 | 2474 | 2915 | 3403 | 3688 | 3977 | 4310 | -36.25% |
| Ratio Sales/List | 222.3% | 200.0% | 222.9% | 107.8% | 72.2% | 50.9% | 42.5% | 45.3% | 49.3% | 31.8% | 36.1% | 51.6% | |
| DOM Active | 3 | 3 | 7 | 13 | 21 | 32 | 34 | 41 | 55 | 71 | 84 | 91 | |
| DOM Solds | 8 | 6 | 5 | 5 | 6 | 7 | 11 | 15 | 26 | 32 | 39 | 44 | |
| Average Sale Price | \$408,916 | \$408,356 | \$409,752 | \$415,485 | \$408,277 | \$413,926 | \$419,151 | \$411,930 | \$408,152 | \$416,230 | \$401,924 | \$405,367 | \$410,622 |
| Median Sales Price | \$420,000 | \$421,499 | \$417,000 | \$423,932 | \$410,000 | \$419,789 | \$420,000 | \$420,000 | \$412,340 | \$420,000 | \$405,000 | \$414,950 | \$419,895 |

| 2023 | Jan | Feb | March | April | May | June | July | August | Sept | Oct | Nov | Dec | Change |
|--------------------|-----------|-----------|-----------|-----------|-----------|-----------|-----------|-----------|-----------|-----------|-----------|-----------|-----------|
| Active | 567 | 489 | 424 | 436 | 472 | 490 | 627 | 710 | 734 | 692 | 592 | 557 | |
| Solds | 285 | 399 | 478 | 439 | 425 | 401 | 339 | 392 | 340 | 337 | 283 | 341 | |
| YTD Solds | 285 | 684 | 1162 | 1601 | 2026 | 2427 | 2766 | 3158 | 3498 | 3835 | 4118 | 4459 | 3.46% |
| Ratio Sales/List | 50.3% | 81.6% | 112.7% | 100.7% | 90.0% | 81.8% | 54.1% | 55.2% | 46.3% | 48.7% | 47.8% | 61.2% | |
| DOM Active | 67 | 45 | 29 | 28 | 28 | 31 | 25 | 35 | 42 | 54 | 59 | 45 | |
| DOM Solds | 47 | 42 | 28 | 27 | 20 | 18 | 19 | 24 | 20 | 27 | 28 | 31 | |
| Average Sale Price | \$399,821 | \$396,499 | \$396,890 | \$401,483 | \$402,931 | \$405,558 | \$402,462 | \$406,768 | \$408,733 | \$409,560 | \$412,689 | \$405,621 | \$404,085 |
| Median Sales Price | \$405,990 | \$408,000 | \$406,570 | \$408,000 | \$410,000 | \$414,900 | \$405,000 | \$411,000 | \$412,495 | \$425,000 | \$428,900 | \$420,000 | \$410,500 |

Homes Over \$500,000– Utah and Juab Counties

| 2021 | Jan | Feb | March | April | May | June | July | August | Sept | Oct | Nov | Dec | Change |
|---------------------------|------------|------------|--------------|--------------|------------|-------------|-------------|---------------|-------------|------------|------------|------------|---------------|
| Active | 151 | 168 | 272 | 320 | 434 | 517 | 527 | 513 | 489 | 420 | 331 | 278 | |
| Solds | 150 | 170 | 250 | 357 | 337 | 451 | 462 | 470 | 458 | 451 | 439 | 500 | |
| YTD Solds | 150 | 320 | 570 | 927 | 1264 | 1715 | 2177 | 2647 | 3105 | 3556 | 3995 | 4495 | |
| Ratio Sales/List | 99.3% | 101.2% | 91.9% | 111.6% | 77.6% | 87.2% | 87.7% | 91.6% | 93.7% | 107.4% | 132.6% | 179.9% | |
| DOM Active | 34 | 19 | 17 | 18 | 17 | 19 | 22 | 31 | 32 | 33 | 46 | 39 | |
| DOM Solds | 10 | 15 | 6 | 6 | 7 | 7 | 8 | 8 | 10 | 11 | 11 | 12 | |
| Average Sale Price | \$722,643 | \$716,141 | \$718,672 | \$753,295 | \$707,464 | \$729,286 | \$714,986 | \$701,352 | \$693,682 | \$717,374 | \$723,889 | \$713,625 | \$717,701 |
| Median Sales Price | \$625,735 | \$630,950 | \$608,653 | \$615,000 | \$602,500 | \$624,450 | \$623,676 | \$612,000 | \$603,550 | \$625,500 | \$625,800 | \$617,100 | \$620,388 |

| 2022 | Jan | Feb | March | April | May | June | July | August | Sept | Oct | Nov | Dec | Change |
|---------------------------|------------|------------|--------------|--------------|------------|-------------|-------------|---------------|-------------|------------|------------|------------|---------------|
| Active | 331 | 388 | 563 | 982 | 1,478 | 1,565 | 1,543 | 1,545 | 1,517 | 1,330 | 1,219 | 1,071 | |
| Solds | 330 | 383 | 606 | 605 | 645 | 617 | 496 | 516 | 478 | 317 | 278 | 330 | |
| YTD Solds | 330 | 713 | 1319 | 1924 | 2569 | 3186 | 3682 | 4198 | 4676 | 4993 | 5271 | 5601 | 24.61% |
| Ratio Sales/List | 99.7% | 98.7% | 107.6% | 61.6% | 43.6% | 39.4% | 32.1% | 33.4% | 31.5% | 23.8% | 22.8% | 30.8% | |
| DOM Active | 15 | 14 | 18 | 19 | 26 | 41 | 50 | 55 | 61 | 77 | 91 | 95 | |
| DOM Solds | 9 | 6 | 6 | 6 | 7 | 11 | 16 | 20 | 29 | 36 | 41 | 38 | |
| Average Sale Price | \$717,681 | \$709,500 | \$707,326 | \$721,480 | \$723,275 | \$729,624 | \$747,716 | \$728,955 | \$725,661 | \$715,877 | \$732,467 | \$776,435 | \$728,000 |
| Median Sales Price | \$617,365 | \$616,825 | \$616,213 | \$635,000 | \$635,000 | \$643,000 | \$670,750 | \$650,000 | \$651,895 | \$632,713 | \$643,310 | \$653,000 | \$639,000 |

| 2023 | Jan | Feb | March | April | May | June | July | August | Sept | Oct | Nov | Dec | Change |
|---------------------------|------------|------------|--------------|--------------|------------|-------------|-------------|---------------|-------------|------------|------------|------------|---------------|
| Active | 1,020 | 991 | 1,022 | 1,153 | 1,179 | 1,241 | 1,229 | 1,294 | 1,256 | 1,126 | 1,053 | 950 | |
| Solds | 219 | 305 | 380 | 355 | 375 | 398 | 354 | 377 | 317 | 268 | 249 | 259 | |
| YTD Solds | 219 | 524 | 904 | 1259 | 1634 | 2032 | 2386 | 2763 | 3080 | 3348 | 3597 | 3856 | -31.16% |
| Ratio Sales/List | 21.5% | 30.8% | 37.2% | 30.8% | 31.8% | 32.1% | 28.8% | 29.1% | 25.2% | 23.8% | 23.6% | 27.3% | |
| DOM Active | 79 | 61 | 57 | 47 | 48 | 51 | 55 | 55 | 65 | 65 | 75 | 73 | |
| DOM Solds | 56 | 50 | 34 | 35 | 27 | 28 | 27 | 35 | 40 | 41 | 41 | 45 | |
| Average Sale Price | \$777,845 | \$716,522 | \$729,159 | \$742,317 | \$789,150 | \$742,965 | \$769,326 | \$805,468 | \$740,965 | \$740,791 | \$710,297 | \$710,843 | \$747,971 |
| Median Sales Price | \$655,000 | \$643,060 | \$630,000 | \$650,000 | \$646,295 | \$655,805 | \$630,350 | \$650,000 | \$639,928 | \$639,900 | \$635,000 | \$630,000 | \$641,494 |

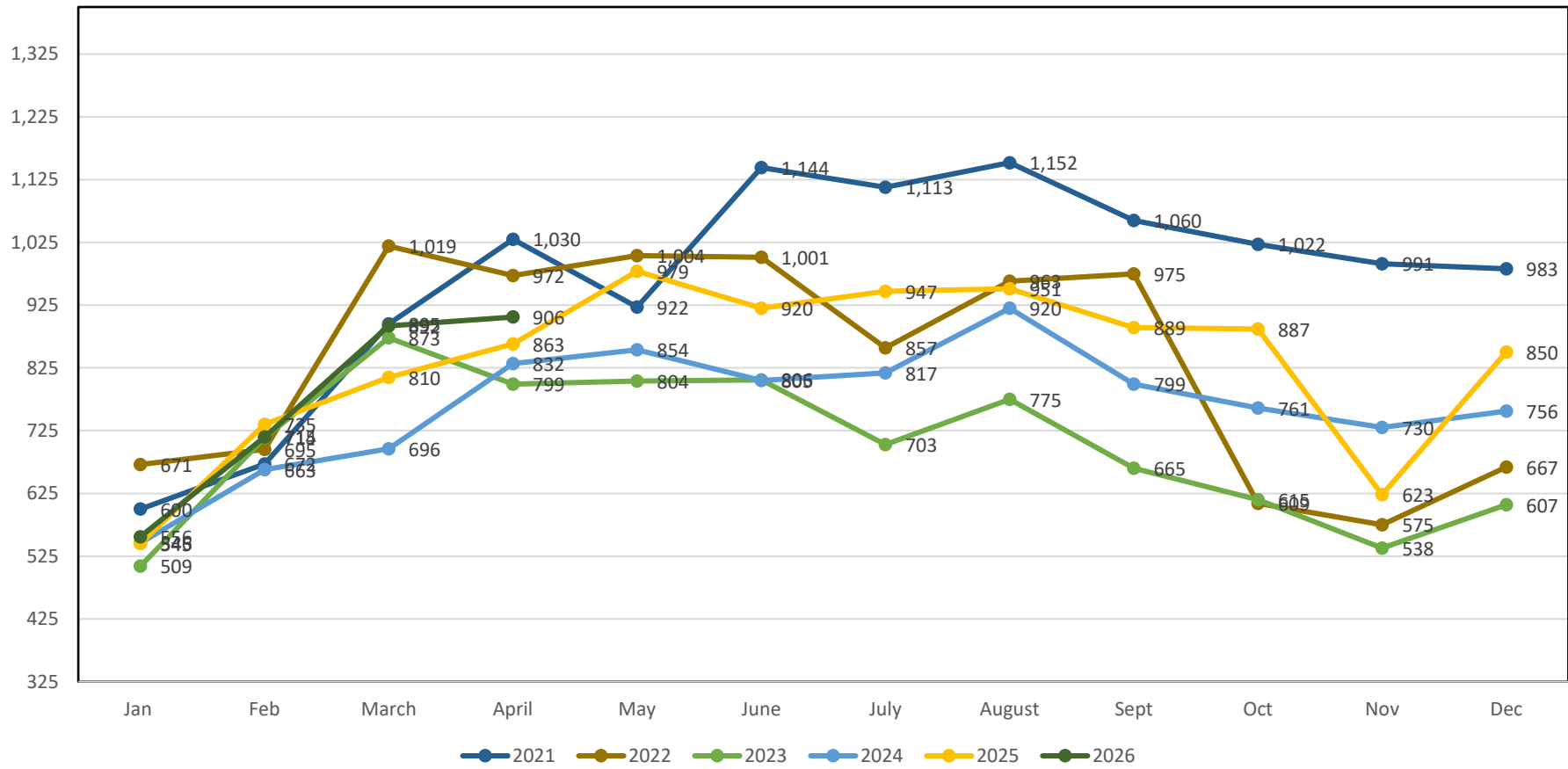
Homes Over \$1,000,000– Utah and Juab Counties

| 2021 | Jan | Feb | March | April | May | June | July | August | Sept | Oct | Nov | Dec | Change |
|---------------------------|-------------|-------------|--------------|--------------|-------------|-------------|-------------|---------------|-------------|-------------|-------------|-------------|---------------|
| Active | 48 | 52 | 75 | 84 | 107 | 101 | 120 | 115 | 111 | 99 | 93 | 88 | |
| Solds | 15 | 13 | 27 | 42 | 25 | 45 | 47 | 36 | 36 | 38 | 32 | 44 | |
| YTD Solds | 15 | 28 | 55 | 97 | 122 | 167 | 214 | 250 | 286 | 324 | 356 | 400 | |
| Ratio Sales/List | 31.3% | 25.0% | 36.0% | 50.0% | 23.4% | 44.6% | 39.2% | 31.3% | 32.4% | 38.4% | 34.4% | 50.0% | |
| DOM Active | 115 | 47 | 27 | 31 | 36 | 47 | 48 | 58 | 68 | 68 | 88 | 82 | |
| DOM Solds | 91 | 74 | 23 | 13 | 17 | 15 | 14 | 17 | 13 | 43 | 9 | 43 | |
| Average Sale Price | \$1,408,733 | \$1,604,769 | \$1,452,473 | \$1,681,501 | \$1,667,730 | \$1,523,636 | \$1,420,391 | \$1,489,723 | \$1,432,649 | \$1,599,154 | \$1,690,695 | \$1,494,631 | \$1,538,840 |
| Median Sales Price | \$1,250,000 | \$1,200,000 | \$1,370,000 | \$1,370,000 | \$1,500,000 | \$1,360,000 | \$1,275,000 | \$1,255,500 | \$1,245,000 | \$1,336,250 | \$1,304,000 | \$1,320,000 | \$1,312,000 |

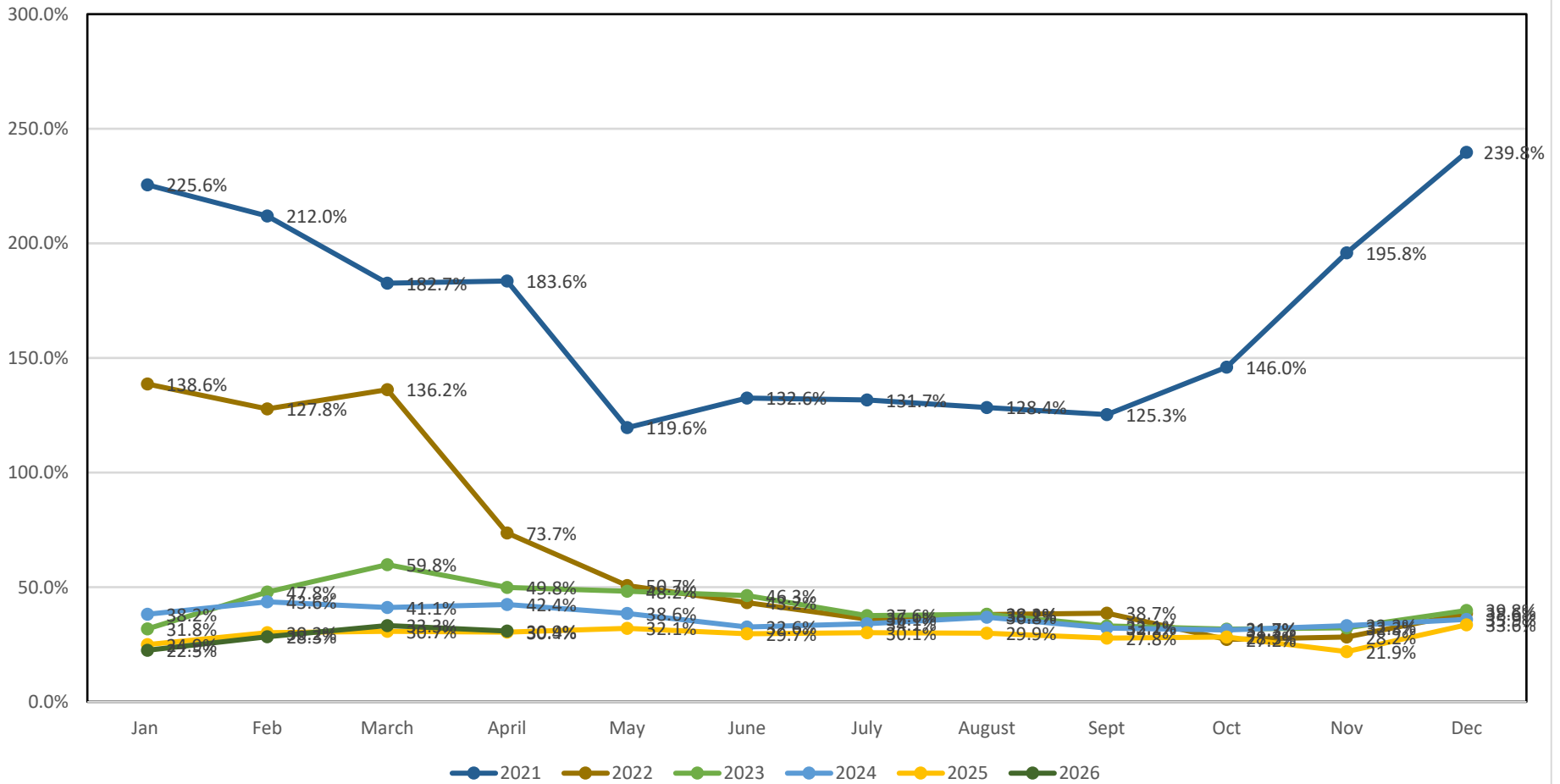
| 2022 | Jan | Feb | March | April | May | June | July | August | Sept | Oct | Nov | Dec | Change |
|---------------------------|-------------|-------------|--------------|--------------|-------------|-------------|-------------|---------------|-------------|-------------|-------------|-------------|---------------|
| Active | 112 | 119 | 170 | 213 | 292 | 291 | 287 | 286 | 296 | 267 | 239 | 217 | |
| Solds | 28 | 22 | 47 | 58 | 69 | 63 | 55 | 57 | 45 | 28 | 30 | 43 | |
| YTD Solds | 28 | 50 | 97 | 155 | 224 | 287 | 342 | 399 | 444 | 472 | 502 | 545 | 36.25% |
| Ratio Sales/List | 25.0% | 18.5% | 27.6% | 27.2% | 23.6% | 21.6% | 19.2% | 19.9% | 15.2% | 10.5% | 12.6% | 19.8% | |
| DOM Active | 51 | 45 | 38 | 36 | 39 | 49 | 66 | 87 | 90 | 102 | 109 | 120 | |
| DOM Solds | 34 | 9 | 6 | 7 | 9 | 20 | 19 | 24 | 27 | 40 | 31 | 54 | |
| Average Sale Price | \$1,599,283 | \$1,757,717 | \$1,525,605 | \$1,399,378 | \$1,384,237 | \$1,433,296 | \$1,400,121 | \$1,345,301 | \$1,364,318 | \$1,449,932 | \$1,383,192 | \$1,521,765 | \$1,463,679 |
| Median Sales Price | \$1,282,250 | \$1,380,000 | \$1,250,000 | \$1,195,097 | \$1,225,000 | \$1,289,500 | \$1,199,000 | \$1,250,000 | \$1,206,664 | \$1,223,400 | \$1,225,977 | \$1,309,704 | \$1,237,989 |

| 2023 | Jan | Feb | March | April | May | June | July | August | Sept | Oct | Nov | Dec | Change |
|---------------------------|-------------|-------------|--------------|--------------|-------------|-------------|-------------|---------------|-------------|-------------|-------------|-------------|---------------|
| Active | 208 | 208 | 213 | 262 | 287 | 291 | 274 | 296 | 298 | 291 | 245 | 239 | |
| Solds | 25 | 23 | 39 | 43 | 60 | 53 | 43 | 65 | 47 | 35 | 24 | 22 | |
| YTD Solds | 25 | 48 | 87 | 130 | 190 | 243 | 286 | 351 | 398 | 433 | 457 | 479 | -12.11% |
| Ratio Sales/List | 12.0% | 11.1% | 18.3% | 16.4% | 20.9% | 18.2% | 15.7% | 22.0% | 15.8% | 12.0% | 9.8% | 9.2% | |
| DOM Active | 122 | 109 | 88 | 66 | 49 | 63 | 74 | 75 | 85 | 80 | 95 | 95 | |
| DOM Solds | 25 | 30 | 20 | 29 | 20 | 30 | 19 | 32 | 40 | 36 | 100 | 63 | |
| Average Sale Price | \$1,694,164 | \$1,373,085 | \$1,453,939 | \$1,379,135 | \$1,519,692 | \$1,334,470 | \$1,649,217 | \$1,551,173 | \$1,271,525 | \$1,364,221 | \$1,262,966 | \$1,516,416 | \$1,447,500 |
| Median Sales Price | \$1,150,000 | \$1,199,000 | \$1,150,000 | \$1,242,068 | \$1,218,360 | \$1,215,000 | \$1,395,000 | \$1,367,710 | \$1,190,000 | \$1,163,000 | \$1,143,000 | \$1,444,750 | \$1,207,000 |

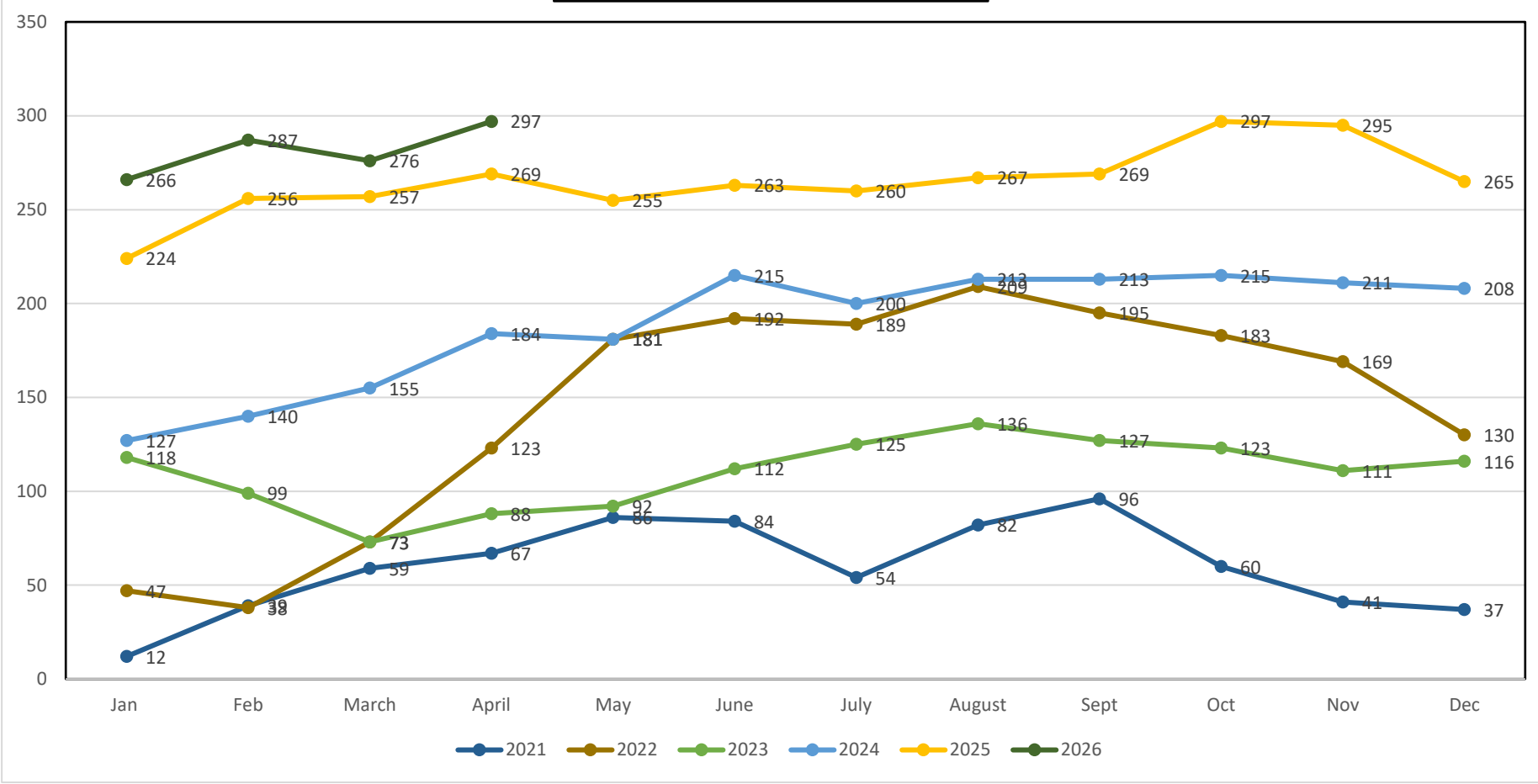
All Units Sold 2021- 2026



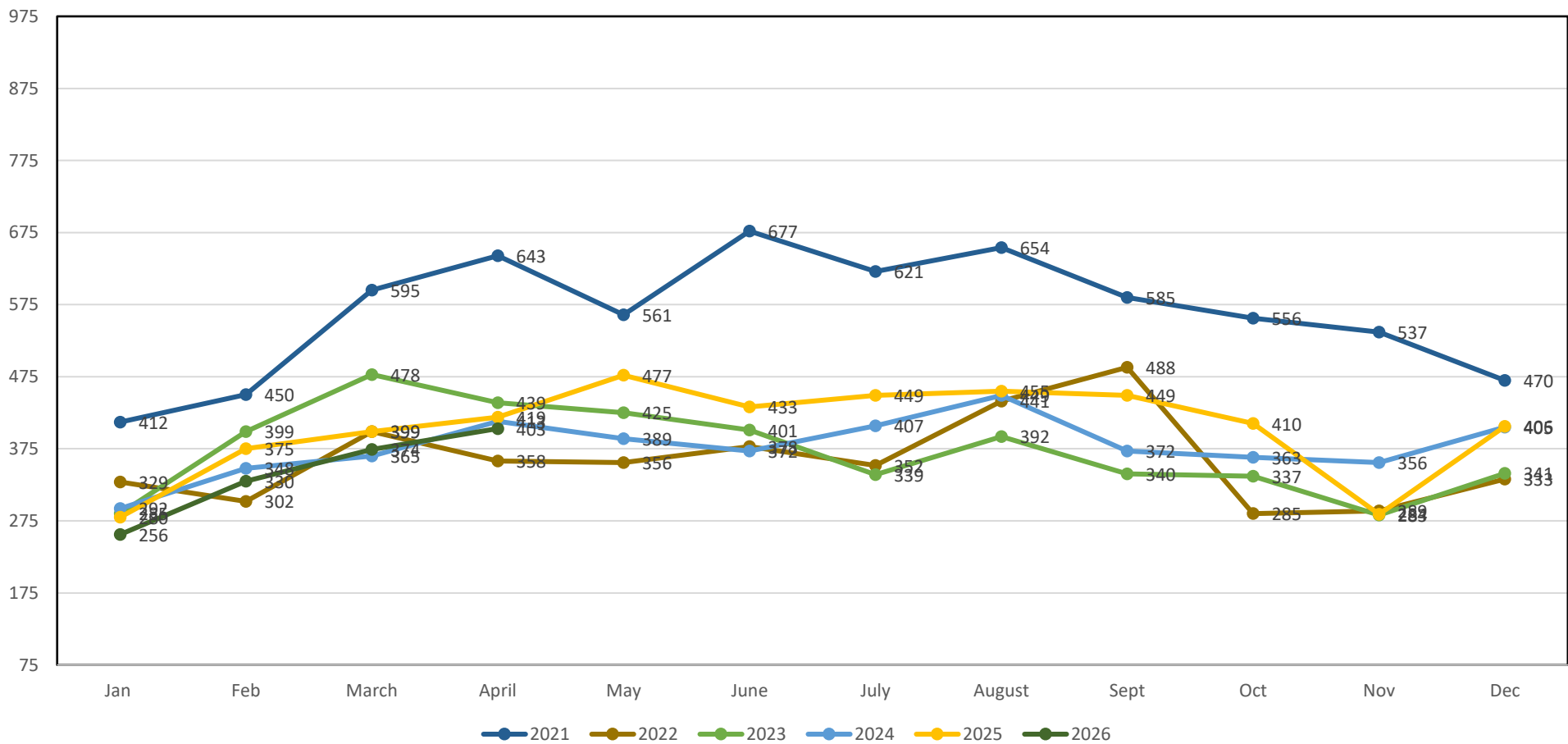
Percentage Ratio of Sold vs. Active



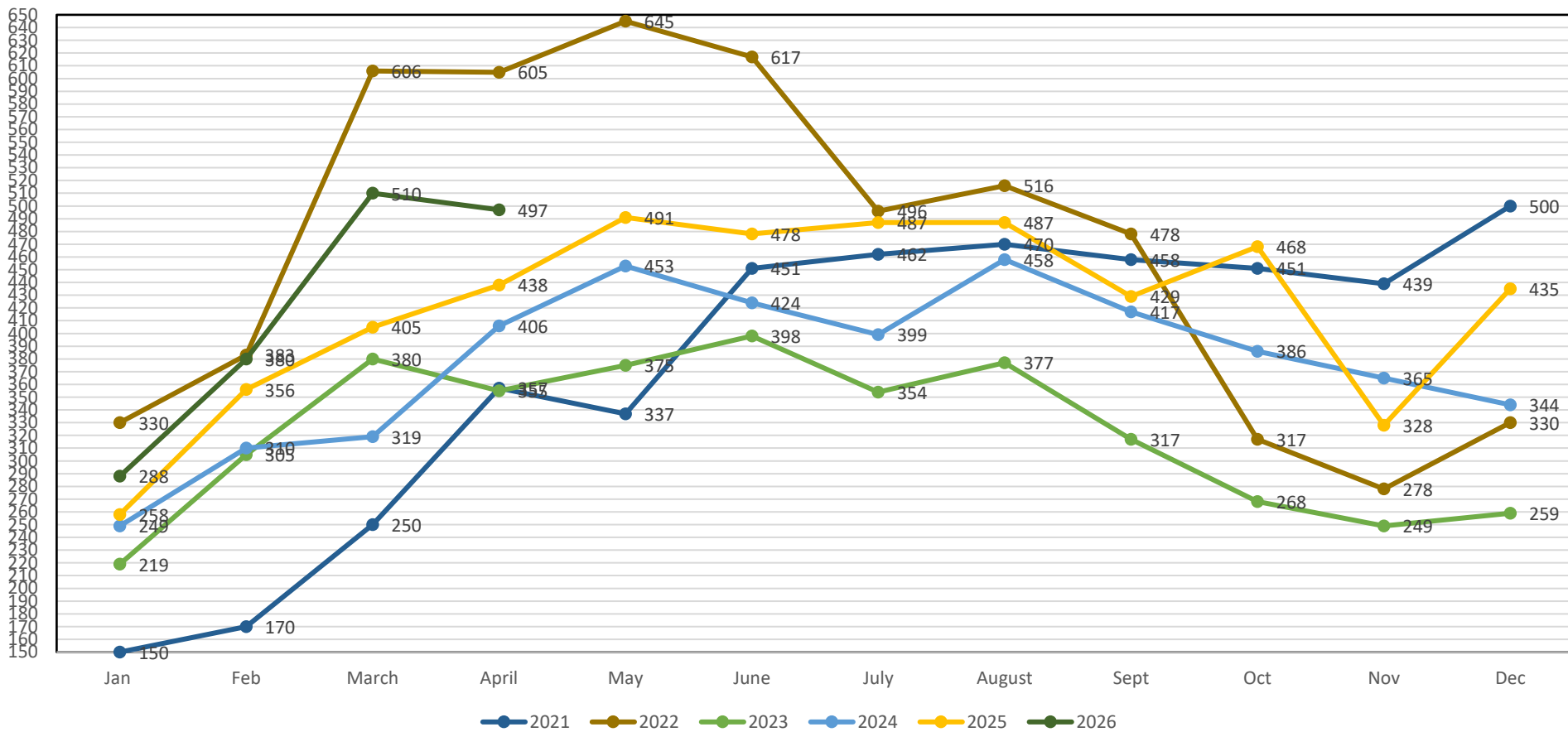
Active Condo Listings 2021-2026



Properties sold for \$250,000-\$499,999 2021-2026



Properties sold for \$500,000 or more 2021-2026



Days on Market- All Residential Solds 2021-2026

